

Appendix 3 – Species of conservation concern in Gloucestershire

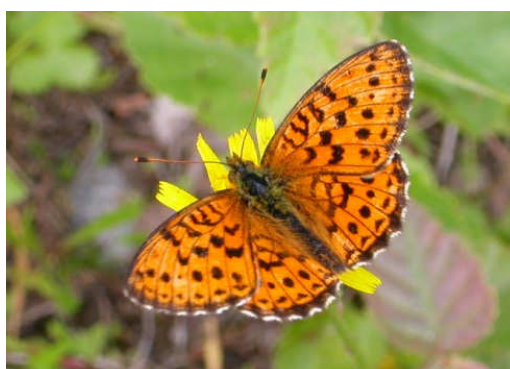
This Appendix contains the reference species lists for use when assessing the minimum thresholds for selecting KWS on species grounds. General thresholds for different categories of species conservation status are detailed in Part 2 of the KWS Handbook, Section 2.6. Key species groups such as bats, amphibians and butterflies also have an accompanying rationale for site selection, provided by the relevant expert County Recorders.

“Schedule” in the Status column of the species lists refers to schedules of The Wildlife and Countryside Act 1981 (and subsequent amendments) unless otherwise stated. IUCN Red List refers to the IUCN Global Red List; National Red List is the national listing based on IUCN criteria but applied regionally rather than globally. A longer summary of the legislation and designation categories relating to species status is listed in Appendix 4.

The relevant threshold from the Species Criteria in Section 2.6 is included next to each species list, or individual species entry where applicable.

Please note that these tables will be subject to regular updates as and when the status of species is reviewed, and that some species may occasionally be added to, or removed from, the lists. Species assemblage indices may also change from time to time. **Please check that you have the latest version of Appendix 3 before assessing a site for KWS selection!** If in doubt, a master list of all UK conservation designations is available from the JNCC website here:

<http://www.jncc.gov.uk/page-3408>.



Pearl-bordered fritillary – a local and national rarity

Contents

S1 – Vascular Plants	3
Table S1a: Vascular plants of high conservation concern	3
Table S1b: Vascular plants with 10% or more of their English hectads in Gloucestershire	7
Table S1c: Grading of wild daffodil sites	9
S2 – Lower Plants and Fungi	11
Table S2a: Lower plants and fungi of high conservation concern in Gloucestershire	11
Table S2b: Lower plants and fungi of conservation concern in Gloucestershire.....	16
S3 – Birds and Animals	21
Table S3 – Birds and animals of conservation concern in Gloucestershire	22
Table S4 – Important bird assemblages	89

S1 – Vascular Plants

Threshold S1.1 – All sites which support populations of vascular plant species of high conservation concern, as listed in Appendix 3:Table S1a.

Table S1a: Vascular plants of high conservation concern

Species which also feature in Table S1b are highlighted in bold

Status column sources are in **RED** if they haven't yet been updated to the latest available JNCC lists or other recent sources of species status information.

Species	Common name	Status <i>JNCC checklist: 2011-01-21 and BSBI England Vascular Plant Red Data List 2014 Not yet re-checked: JNCC checklist: 2014-08-22 (awaiting update)</i>
<i>Orchis anthropophorum</i>	Man orchid	IUCN Red List Endangered, UK Priority Species, Nationally Scarce
<i>Aconitum napellus subsp. napellus</i>	Monkshood	Nationally scarce
<i>Alopecurus bulbosus</i>	Bulbous foxtail	Nationally scarce
<i>Althaea officinalis</i>	Marsh-mallow	Nationally scarce
<i>Arabis glabra</i>	Tower Mustard	UK Priority Species, Nationally scarce
<i>Asplenium trichomanes subsp. pachyrachis</i>	Maidenhair spleenwort	Nationally rare
<i>Atriplex longipes</i>	Long-stalked orache	Nationally scarce
<i>Blysmus compressus</i>	Flat-sedge	UK Priority species
<i>Brassica oleracea</i>	Cabbage	Nationally scarce
<i>Bromopsis benekenii</i>	Lesser hairy-brome	Nationally scarce
<i>Bupleurum tenuissimum</i>	Slender Hare's-ear	UK Priority Species, Nationally scarce
<i>Campanula patula</i>	Spreading Bellflower	UK Priority Species, Nationally scarce
<i>Cardamine impatiens</i>	Narrow-leaved bittercress	Nationally scarce
<i>Carex digitata</i>	Fingered sedge	Nationally scarce
<i>Carex divisa</i>	Divided sedge	Nationally scarce
<i>Carex filiformis</i>	Downy-fruited sedge	Nationally rare
<i>Carex humilis</i>	Dwarf sedge	Nationally scarce
<i>Carex montana</i>	Soft-leaved sedge	Nationally scarce

<i>Carex vulpina</i>	True Fox Sedge	UK Priority Species, Nationally rare
<i>Centaurea cyanus</i>	Cornflower	UK Priority Species
<i>Cephalanthera damasonium</i>	White Helleborine	UK Priority Species
<i>Cephalanthera longifolia</i>	Narrow-leaved Helleborine	UK Priority Species, Nationally scarce
<i>Cephalanthera rubra</i>	Red Helleborine	RDP Critically Endangered, Schedule 8, UK Priority Species, Nationally rare
<i>Cerastium pumilum</i>	Dwarf mouse-ear	IUCN Red List Nr threatened, Nationally Scarce
<i>Clinopodium acinos</i>	Basil- thyme	UK Priority species
<i>Clinopodium calamintha</i>	Lesser calamint	Nationally scarce
<i>Coeloglossum viride</i>	Frog Orchid	UK Priority species
<i>Cuscuta europaea</i>	Greater dodder	Nationally scarce
<i>Cynoglossum germanicum</i>	Green Hound`s-tongue	UK Priority Species, Schedule 8, IUCN Red List Critically Endangered, Nationally rare
<i>Daphne mezereum</i>	Mezereon	Nationally scarce
<i>Draba muralis</i>	Wall whitlow-grass	Nationally scarce
<i>Epipactis leptochila</i>	Narrow-lipped helleborine	Nationally scarce
<i>Epipactis phyllanthes</i>	Green-flowered helleborine	Nationally scarce
<i>Euphorbia serrulata</i>	Upright spurge	Nationally rare
<i>Filago lutescens</i>	Red-tipped Cudweed	UK Priority Species, Nationally scarce
<i>Fritillaria meleagris</i>	Fritillary	Nationally scarce
<i>Fumaria purpurea</i>	Purple ramping-fumitory	Nationally scarce
<i>Galeopsis angustifolia</i>	Red Hemp-nettle	UK Priority Species, Nationally scarce
<i>Galium pumilum</i>	Slender Bedstraw	UK Priority Species, Nationally rare
<i>Gentianella anglica</i>	Early Gentian	Bern Convention Annex 1, UK Priority Species, Schedule 8, The Conservation of Habitats and Species Regulations 2010
<i>Gymnocarpium robertianum</i>	Limestone fern	Nationally scarce
<i>Helleborus foetidus</i>	Stinking hellebore	Nationally scarce
<i>Herminium monorchis</i>	Musk Orchid	UK Priority Species, Nationally scarce
<i>Himantoglossum hircinum</i>	Lizard orchid	Nationally scarce, Schedule 8
<i>Hordelymus europaeus</i>	Wood barley	Nationally scarce

<i>Hordeum marinum</i>	Sea barley	Nationally scarce
<i>Hornungia petraea</i>	hutchinsia	Nationally scarce
<i>Juniperus communis</i>	Juniper	UK Priority Species
<i>Lathyrus aphaca</i>	Yellow vetchling	Nationally scarce
<i>Lepidium latifolium</i>	Dittander	Nationally scarce
<i>Limosella aquatica</i>	mudwort	Nationally scarce
<i>Lythrum hyssopifolia</i>	Grass-poly	UK Priority Species, Schedule 8, Nationally rare
<i>Marrubium vulgare</i>	White horehound	Nationally scarce
<i>Mentha pulegium</i>	Pennyroyal	Nationally scarce, Schedule 8
<i>Minuartia hybrida</i>	Fine-leaved sandwort	Nationally scarce
<i>Monotropa hypopitys</i>	Yellow Bird`s-nest	UK Priority Species, Nationally scarce
<i>Oenanthe fistulosa</i>	Tubular Water-dropwort	UK Priority Species
<i>Oenanthe silaifolia</i>	Narrow-leaved water-dropwort	Nationally scarce
<i>Ophrys insectifera</i>	Fly Orchid	UK Priority Species
<i>Ophrys sphegodes</i>	Early spider-orchid	Nationally scarce, Schedule 8
<i>Orchis ustulata</i>	Burnt Orchid	UK Priority Species, Nationally scarce
<i>Orobanche rapum-genistae</i>	Greater broomrape	Nationally scarce
<i>Persicaria mitis</i>	Tasteless water-pepper	Nationally scarce
<i>Polygonatum odoratum</i>	Angular Solomon`s-seal	Nationally scarce
<i>Potamogeton compressus</i>	Grass-wrack Pondweed	UK Priority Species
<i>Puccinellia rupestris</i>	Stiff saltmarsh-grass	Nationally scarce
<i>Pulsatilla vulgaris</i>	Pasqueflower	UK Priority Species, IUCN Red List Vulnerable, Nationally scarce
<i>Ranunculus ophioglossifolius</i>	Adder`s-tongue spearwort ("Badgeworth buttercup")	Nationally rare, Schedule 8
<i>Salvia pratensis</i>	Meadow clary	Nationally scarce, Schedule 8
<i>Scandix pecten-veneris</i>	Shepherd`s Needle	UK Priority Species
<i>Sedum forsterianum</i>	Rock stonecrop	Nationally scarce
<i>Sorbus anglica</i>	a whitebeam	Nationally rare
<i>Sorbus bristoliensis</i>	Bristol whitebeam	UK Priority Species, Nationally rare
<i>Sorbus domestica</i>	Service-tree	Nationally rare

<i>Sorbus eminens</i>	a whitebeam	UK Priority Species, Nationally rare
<i>Sorbus porrigentiformis</i>	a whitebeam	Nationally scarce
<i>Sorbus rupicola</i>	Rock whitebeam	Nationally scarce
<i>Sorbus wilmottiana</i>	a whitebeam	UK Priority Species, Nationally rare
<i>Stellaria nemorum subsp. montana</i>	Wood stitchwort	Nationally rare
<i>Tephrosia integrifolia subsp. integrifolia</i>	Field Fleawort	UK Priority Species
<i>Thesium humifusum</i>	Bastard-toadflax	Nationally scarce
<i>Thlaspi perfoliatum</i>	Cotswold Pennycress	UK Priority Species, Nationally rare, Schedule 8
<i>Tilia platyphyllos</i>	Large-leaved lime	Nationally scarce
<i>Torilis arvensis</i>	Spreading Hedge Parsley	UK Priority Species, Nationally scarce
<i>Trichomanes speciosum</i>	Killarney fern	Nationally rare, Bern Convention, Sch8, Nationally rare
<i>Trifolium squamosum</i>	Sea clover	Nationally scarce
<i>Valerianella rimosa</i>	Broad-Fruited Corn Salad	UK Priority species
<i>Vicia bithynica</i>	Bithynian vetch	Nationally scarce
<i>Vicia parviflora</i>	Slender tare	Nationally scarce

Threshold S1.2 – All sites supporting native species not covered by Threshold S1.1 which have 10% or more of their English 10km grid square distribution in the county, as listed in Appendix 3: Table S1b. Only sites which have adequate amounts of suitable habitat for long-term survival of the species will be selected under this criterion.

Table S1b: Vascular plants with 10% or more of their English hectads in Gloucestershire

Species which also feature in Table S1a are highlighted in bold and covered by Threshold S1.1 in any case; the remaining species fall within Threshold S1.2.

Species	Common name	% of England hectads within Gloucestershire
<i>Aconitum napellus</i>	Monkshood	14.28571
<i>Alopecurus bulbosus</i>	Bulbous foxtail	10.86957
<i>Asplenium trichomanes subsp. pachyrachis</i>	Maidenhair spleenwort	33.33333
<i>Atriplex longipes</i>	Long-stalked orache	10.52632
<i>Bromopsis benekenii</i>	Lesser hairy-brome	15.78947
<i>Campanula patula</i>	Spreading bellflower	17.14286
<i>Cardamine impatiens</i>	Narrow-leaved bitter-cress	13.63636
<i>Carex digitata</i>	Fingered sedge	37.5
<i>Carex filiformis</i>	Downy-fruited sedge	60
<i>Carex montana</i>	Soft-leaved sedge	10.52632
<i>Cephalanthera rubra</i>	Red helleborine	33.33333
<i>Cerastium pumilum</i>	Dwarf mouse-ear	12.82051
<i>Cirsium eriophorum</i>	Woolly thistle	12.32877
<i>Colchicum autumnale</i>	Autumn crocus	17.12329
<i>Cynoglossum germanicum</i>	Green hound's-tongue	25
<i>Dipsacus pilosus</i>	Small teasel	11.11111
<i>Draba muralis</i>	Wall whitlowgrass	17.85714
<i>Epipactis leptochila</i>	Narrow-lipped helleborine	12.76596
<i>Erophila majuscula</i>	Hairy whitlowgrass	12.90323
<i>Euphorbia serrulata</i>	Upright spurge	87.5
<i>Fritillaria meleagris</i>	Fritillary	15.625
<i>Galium pumilum</i>	Slender bedstraw	13.33333
<i>Gymnocarpium robertianum</i>	Limestone fern	20.83333

<i>Helleborus foetidus</i>	Stinking hellebore	25.33333
<i>Herminium monorchis</i>	Musk orchid	12.5
<i>Hordelymus europaeus</i>	Wood barley	11.57895
<i>Lepidium latifolium</i>	Dittander	11.11111
<i>Marrubium vulgare</i>	White horehound	22.72727
<i>Monotropa hypopitys</i>	Yellow bird's-nest	11.49425
<i>Oenanthe silaifolia</i>	Narrow-leaved water dropwort	10.81081
<i>Onobrychis viciifolia</i>	Sainfoin*	13.95349
	*applies to likely native populations, not sown grassland mixes, imported seed etc.	
<i>Polygala calcarea</i>	Chalk milkwort	10.34483
<i>Polygonatum odoratum</i>	Angular Solomon's-seal	32
<i>Pulsatilla vulgaris</i>	Pasqueflower	17.3913
<i>Pyrola minor</i>	Common wintergreen	10.52632
<i>Ranunculus ophioglossifolius</i>	Adder's-tongue spearwort (Badgeworth buttercup)	100
<i>Salvia pratensis</i>	Meadow clary	21.05263
<i>Sorbus anglica</i>	a native whitebeam	22.22222
<i>Sorbus aria</i>	a native whitebeam	12.93532
<i>Sorbus domestica</i>	Service-tree	66.66667
<i>Sorbus eminens</i>	a native whitebeam	28.57143
<i>Sorbus porrigentiformis</i>	a native whitebeam	16.66667
<i>Sorbus rupicola</i>	a native whitebeam	13.63636
<i>Stellaria nemorum</i> including subsp. <i>montana</i>	Wood stitchwort and its Welsh subspecies (the only 10k square for the subspecies in England is in Gloucestershire)	100
<i>Thesium humifusum</i>	Bastard-toadflax	12.90323
<i>Thlaspi perfoliatum</i>	Perfoliate penny-cress	60

S1.3 – All grasslands and woodlands with mass populations of native wild daffodil
(Narcissus pseudonarcissus subsp. pseudonarcissus)

Table S1c: Grading of wild daffodil sites

The grades below are used with the GWT Wildlife Daffodil Survey; where a site or habitat has been graded the grade may be used to help work out whether a site should be selected as a Key Wildlife Site under criterion S1.3.

Grading of significant woodland sites	
A*	well-established, continuous and extensive, dense in parts, and where light levels / management appear suitable for regeneration of wild daffodils. (NB presence of juveniles unfortunately not recorded)
A	well-established extensive, but perhaps non-continuous, perhaps because shading in some areas prevents regeneration. Sometimes a small dense population in a smaller site
B	possibly once extensive but declined due to shading where thinning or coppicing neglected, resulting in dense understorey, or where conifers were present and shading. Occasionally a small / more isolated site or population.
C	A site with just a handful of records, probably from a previously larger population
NP	New planting of wild daffodils
Grading of significant field sites (grassland, arable or orchard)	
A*	Well-established, continuous and extensive population, dense in parts, where current management (including grazing) promotes survival and regeneration.
A	Either an extensive but less dense population <u>or</u> a dense population on a smaller site <u>or</u> where population is good and management adequate
B	Prolific only on field margins <u>or</u> a residual population (possibly declining) <u>or</u> a suppressed population
C	just residual population or isolated records, a sign that inappropriate management at some stage has suppressed the population, which is vulnerable to extinction.
NP	New planting of wild daffodils.

Grading of riverbank / streamside sites	
A*	Well-established, fairly continuous and population, dense in parts; where current management (levels of light, grazing or mowing) promote regeneration of wild daffodils; not currently under threat.
A	Either good riverbank populations that are not continuous, or populations that are fairly continuous over a shorter stretch. Some may be in woodland.
B	Perhaps a few short stretches of wild daffodils, which seem to be surviving
C	Isolated residual clusters or singles, vulnerable to inappropriate management
NP	New wild daffodil planting along river, being managed appropriately
Grading of significant road verge sites	
A*	Well-established, extensive, and not isolated population, where apparently current management of verge and hedge promotes the survival and regeneration of wild daffodils, which are currently not under threat.
A	An extensive stretch of wild daffodils, possibly broken into shorter stretches but not isolated, management moderately good. Possibly a few cultivars.
B	A less extensive or isolated population, perhaps short stretches. Or perhaps one threatened by clearly inadequate management, or by significant planting of cultivars.
C	An isolated individual or clump / patch. Or a stretch very vulnerable to extinction through inadequate / inappropriate management. Or individuals on the outer edges of the survey area, probable remnants of earlier populations.
NP	New planting of wild daffodils – positive when managed appropriately

S2 – Lower Plants and Fungi

Threshold S2.1 – Any site on which a population of any lower plant or fungus of high conservation concern has been recorded and confirmed as present within the last five years. Relevant species are listed in Appendix 3, Table S2a. Only sites with adequate appropriate habitat for the conservation of the species in question will be selected.

Table S2a: Lower plants and fungi of high conservation concern in Gloucestershire

Species	Common name	Status
Algae	Stoneworts, seaweeds, river algae and relatives	<i>JNCC checklist: 2011-01-21</i>
<i>Nitellopsis obtusa</i>	Starry Stonewort	UK Priority Species, IUCN Red List Vulnerable
<i>Tolypella intricata</i>	Tassel stonewort	UK Priority Species, IUCN Red List Endangered
<i>Tolypella nidifica</i>	Bird's-nest stonewort	UK Priority Species, IUCN Red List Endangered
<i>Tolypella prolifera</i>	Great tassel stonewort	UK Priority Species, IUCN Red List Endangered
Bryophytes	Mosses, hornworts and liverworts	
<i>Mosses</i>		
<i>Acaulon muticum</i>	Rounded Pygmy-moss	Nationally rare
<i>Anomodon longifolius</i>	Long-leaved Tail-moss	UK Priority Species, IUCN Red List Endangered, Schedule 8, Nationally rare
<i>Atrichum angustatum</i>	Lesser Smoothcap	UK Priority Species, IUCN Red List Critically endangered, Nationally scarce
<i>Bryum archangelicum</i>	Archangelic Thread-moss	Nationally rare
<i>Bryum gemmilucens</i>	Yellow-bud Bryum	IUCN Red List Near threatened, Nationally rare
<i>Bryum intermedium</i>	Many-seasoned Thread-moss	IUCN Red List Data deficient, Nationally scarce
<i>Bryum kunzei</i>		IUCN Red List Near threatened, Nationally rare
<i>Ceratodon conicus</i>	Scarce Redshank	UK Priority Species, IUCN Red List Critically endangered, Nationally rare
<i>Fissidens curvatus</i>	Portuguese Pocket-	UK Priority Species, IUCN Red List

	moss	Endangered, Nationally rare
<i>Grimmia tergestina</i>	Dapple-mouthed Grimmia	IUCN Red List Vulnerable, Nationally rare
<i>Leptodontium gemmascens</i>	Thatch-moss	UK Priority Species, IUCN Red List Vulnerable, Nationally rare
<i>Orthotrichum obtusifolium</i>	Blunt-leaved Bristle-moss	UK Priority Species, IUCN Red List Vulnerable, Schedule 8, Nationally rare
<i>Orthotrichum speciosum</i>	Showy Bristle-moss	IUCN Red List Near threatened, Nationally rare
<i>Plagiomnium ellipticum</i>	Marsh Thyme-moss	Nationally rare
<i>Pterygoneurum lamellatum</i>	Spiral Chalk-moss	Nationally rare (possibly extinct)
<i>Pterygoneurum ovatum</i>	Oval-leaved Pottia	IUCN Red List Data deficient, Nationally scarce
<i>Rhynchostegium rotundifolium</i>	Round-leaved Feather-moss	UK Priority Species, IUCN Red List Critically endangered, Schedule 8, Nationally rare
<i>Schistidium elegantulum</i>	Elegant Grimmia	IUCN Red List Data deficient
<i>Seligeria campylopoda</i>	Bentfoot Rock-bristle	IUCN Red List Vulnerable, Nationally rare
<i>Tortula vahliana</i>	Chalk Screw-moss	UK Priority Species, IUCN Red List Vulnerable, Nationally rare
<i>Weissia condensa</i>	Curly Beardless-moss	UK Priority Species, IUCN Red List Vulnerable, Nationally scarce
<i>Weissia squarrosa</i>	Spreading-leaved Beardless-moss	UK Priority Species, IUCN Red List Vulnerable, Nationally scarce
<i>Weissia sterilis</i>	Sterile Beardless-moss	UK Priority Species, IUCN Red List Vulnerable, Nationally scarce
<i>Zygodon forsteri</i>	Knothole Yoke-moss	UK Priority Species, IUCN Red List Endangered, Schedule 8, Nationally rare
Hornworts	(No hornworts of high conservation concern recorded in Gloucestershire)	
Liverworts		
<i>Cephaloziella turneri</i>	Turner's threadwort	IUCN Red List Near threatened, Nationally scarce
<i>Jamesoniella undulifolia</i>	marsh flapwort /earwort	IUCN Red List Vulnerable, Nationally rare
<i>Jungermannia caespiticia</i>	delicate flapwort	IUCN Red List Vulnerable
<i>Jungermannia caespiticia</i>	delicate flapwort	IUCN Red List Vulnerable, Nationally rare
<i>Riccia nigrella</i>	Black Crystalwort	UK Priority Species, IUCN Red List Endangered, Nationally rare

<i>Riccia rhenana</i>	Pond Crystalwort	Nationally rare
<i>Sphaerocarpos texanus</i>	Texas balloonwort	UK Priority Species, IUCN Red List Vulnerable, Nationally scarce

Lichens		<i>JNCC checklist: 2011-01-21</i>
<i>Acarospora macrospora</i> <i>subsp. macrospora</i>		IUCN Red List Near Threatened, Nationally rare
<i>Anaptychia ciliaris subsp.</i> <i>ciliaris</i>		IUCN Red List Vulnerable, UK Priority Species
<i>Bacidia incompta</i>		UK Priority Species, IUCN Red List Vulnerable
<i>Caloplaca atroflava</i>		UK Priority Species, Nationally scarce, IUCN Red List Critically endangered
<i>Caloplaca luteoalba</i>	Orange-Fruited Elm- lichen	UK Priority Species, Nationally scarce, IUCN Red List Vulnerable, Schedule 8
<i>Caloplaca polycarpa</i>		Nationally rare
<i>Catapyrenium pilosellum</i>		IUCN Red List Near threatened, Nationally scarce
<i>Chaenothecopsis</i> <i>caespitosa</i>		IUCN Red List Near Threatened, Nationally rare
<i>Chrysothrix</i> <i>chrysophthalma</i>		IUCN Red List Near Threatened, Nationally rare
<i>Cladonia arbuscula subsp.</i> <i>arbuscula</i>		IUCN Red List Data Deficient, Nationally rare
<i>Cladonia chlorophaea</i>		Nationally rare
<i>Cladonia coccifera</i>		IUCN Red List Data Deficient, Nationally scarce
<i>Cladonia pleurota</i>		Data Deficient
<i>Cliostomum flavidulum</i>		IUCN Red List Data deficient, Nationally rare
<i>Collema fragrans</i>		UK Priority Species, Nationally scarce, IUCN Red List Endangered
<i>Fellhanera ochracea</i>		Nationally rare
<i>Fellhanera subtilis</i>		Nationally rare
<i>Fellhanera viridisorediata</i>		IUCN Red List Data deficient, Nationally rare
<i>Gyalecta flotowii</i>		IUCN Red List Near threatened, Nationally scarce

<i>Lecania cyrtella</i>		IUCN Red List Data deficient, Nationally rare
<i>Lecanora handelii</i>		IUCN Red List Near threatened, Nationally scarce
<i>Lecanora horiza</i>		IUCN Red List Near threatened, Nationally scarce
<i>Lemmopsis arnoldiana</i>		IUCN Red List Near Threatened, Nationally rare
<i>Lempholemma chalazanum</i>		IUCN Red List Data Deficient, Nationally scarce
<i>Lempholemma polyanthes</i>		Nationally scarce
<i>Leptogium massiliense</i>		IUCN Red List Near Threatened, Nationally rare
<i>Micarea pycnidiophora</i>		IUCN Red List Near Threatened, Nationally scarce
<i>Micarea viridileprosa</i>		Nationally rare
<i>Opegrapha paraxanthodes</i>		IUCN Red List Near Threatened, Nationally rare
<i>Porina rosei</i>		IUCN Red List Near Threatened, Nationally scarce
<i>Protoblastenia cyclospora</i>		IUCN Red List Data deficient, Nationally rare
<i>Ramonia dictyospora</i>		IUCN Red List Near Threatened, Nationally rare
<i>Rinodina calcarea</i>		Nationally rare
<i>Rinodina exigua</i>		IUCN Red List Data deficient, Nationally rare
<i>Sclerophora pallida</i>		UK Priority Species, IUCN Red List Vulnerable, Nationally scarce
<i>Scoliciosporum curvatum</i>		Nationally rare
<i>Thelenella modesta</i>	Warty Wax-lichen	UK Priority Species, IUCN Red List Critically endangered, Nationally rare
<i>Thelocarpon magnussonii</i>		IUCN Red List Data deficient, Nationally rare
<i>Thelocarpon olivaceum</i>		Nationally rare
<i>Usnea florida</i>		Priority Species
<i>Verrucaria fuscella</i>		IUCN Red List Data deficient, Nationally rare

<i>Xanthoria ulophyllodes</i>		Nationally rare
-------------------------------	--	-----------------

Fungi	Mushrooms, moulds and relatives	<i>JNCC checklist: 2011-01-21</i>
<i>Amanita friabilis</i>	Fragile Amanita	UK Priority Species
<i>Battarrea phalloides</i>	Sandy Stiltball	UK Priority Species, Schedule 8
<i>Boletus pseudoregius</i>	The Pretender	UK Priority Species, Schedule 8
<i>Boletus regius</i>	Royal bolete	Schedule 8
<i>Boletus rhodopurpureus</i>	Oldrose Bolete	UK Priority Species
<i>Cantharellus friesii</i>	Orange Chanterelle	UK Priority Species
<i>Chrysomyxa pirolata</i>	Wintergreen Rust	UK Priority Species
<i>Cotylidia pannosa</i>	Woolly Rosette	UK Priority Species
<i>Entoloma bloxamii</i>	Big Blue Pinkgill	UK Priority Species
<i>Geastrum berkeleyi</i>	Berkeley's Earthstar	UK Priority Species
<i>Geastrum corollinum</i>	Weathered Earthstar	UK Priority Species
<i>Geastrum elegans</i>	Elegant Earthstar	UK Priority Species
<i>Gomphus clavatus</i>	Pig's Ear	UK Priority Species
<i>Hericium erinaceus</i>	Bearded Tooth ("Hedgehog fungus")	UK Priority Species, Schedule 8
<i>Hydnellum conrescens</i>	Zoned Tooth	UK Priority Species
<i>Hydnellum scrobiculatum</i>	Ridged Tooth	UK Priority Species
<i>Hydnellum spongiosipes</i>	Velvet Tooth	UK Priority Species
<i>Hygrophorus pudorinus</i>	Rosy Woodwax	UK Priority Species
<i>Phylloporus pelletieri</i>	Golden-gilled Bolete	UK Priority Species
<i>Piptoporus quercinus</i>	Oak Polypore	UK Priority Species, Schedule 8
<i>Sarcodon squamosus</i>		UK Priority Species
<i>Sarcosphaera coronaria</i>	Violet Crowncup	UK Priority Species
<i>Stephanospora caroticola</i>	Carrot False Truffle	UK Priority Species
<i>Tremellodendropsis tuberosa</i>	Ashen Coral	UK Priority Species
<i>Urocystis primulicola</i>	Bird's-eye Primrose Smut	UK Priority Species

Threshold S2.2 – Any site on which an assemblage of three or more lower plants or fungi of conservation concern has been recorded and confirmed as present within the last five years. Relevant species are listed in Appendix 3, Table S2b, and include nationally scarce species. Only sites with enough suitable habitat for the conservation of the species in question will be selected.

Table S2b: Lower plants and fungi of conservation concern in Gloucestershire
This list is to be used in conjunction with species threshold S2.2: assemblages of three or more lower plants or fungi.

Species	Common name	Status
Algae	Stoneworts, seaweeds, river algae and relatives	<i>JNCC checklist: 2011-01-21</i>
<i>Chara aculeolata</i>	Hedgehog stonewort	Nationally scarce
<i>Chara curta</i>	Lesser bearded stonewort	Nationally scarce
<i>Nitella mucronata</i>	Pointed stonewort	Nationally scarce
<i>Tolypella glomerata</i>	Clustered stonewort	Nationally scarce
Bryophytes	Mosses, hornworts and liverworts	<i>JNCC checklist: 2011-01-21</i>
<i>Mosses</i>		
<i>Aloina ambigua</i>	Tall Aloe-moss	Nationally scarce
<i>Aloina rigida</i>	Rigid Aloe-moss	Nationally scarce
<i>Amblystegium confervoides</i>	Tiny Feather-moss	Nationally scarce
<i>Brachydontium trichodes</i>	Bristle-leaf	Nationally scarce
<i>Brachythecium salebrosum</i>	Smooth-stalk Feather-moss	Nationally scarce
<i>Bryum canariense</i>	Canary Thread-moss	Nationally scarce
<i>Bryum elegans</i>	Blushing Bryum	Nationally scarce
<i>Bryum pallescens</i>	Tall-clustered Thread-moss	Nationally scarce
<i>Bryum torquescens</i>	Twisting Thread-moss	Nationally scarce
<i>Buxbaumia aphylla</i>	Brown Shield-moss	Nationally scarce
<i>Campyliadelphus elodes</i>	Fine-leaved Marsh Feather-moss	Nationally scarce
<i>Campylophyllum calcareum</i>	Chalk Feather-moss	Nationally scarce
<i>Conardia compacta</i>	Compact Feather-moss	Nationally scarce
<i>Dichodontium flavescens</i>	Yellowish Fork-moss	Nationally scarce
<i>Dicranum polysetum</i>	Rugose Fork-moss	Nationally scarce
<i>Didymodon acutus</i>	Pointed Beard-moss	Nationally scarce

<i>Didymodon umbrosus</i>	Shady Beard-moss	Nationally scarce
<i>Discelium nudum</i>	Flag-moss	Nationally scarce
<i>Ditrichum flexicaule</i>	Bendy Ditrichum	Nationally scarce
<i>Drepanocladus lycopodioides</i>	Large Hook-moss	Nationally scarce
<i>Drepanocladus sendtneri</i>	Chalk Hook-moss	Nationally scarce
<i>Ephemerum recurvifolium</i>	Strap-leaved Earth-moss	Nationally scarce
<i>Eurhynchium striatulum</i>	Lesser Striated Feather-moss	Nationally scarce
<i>Fissidens rivularis</i>	River Pocket-moss	Nationally scarce
<i>Fissidens rufulus</i>	Beck Pocket-moss	Nationally scarce
<i>Funaria muhlenbergii</i>	Muhlenberg's Cord-moss	Nationally scarce
<i>Grimmia decipiens</i>	Great Grimmia	Nationally scarce
<i>Grimmia laevigata</i>	Hoary Grimmia	Nationally scarce
<i>Grimmia montana</i>	Sun Grimmia	Nationally scarce
<i>Grimmia orbicularis</i>	Round-fruited Grimmia	Nationally scarce
<i>Grimmia ovalis</i>	Flat-rock Grimmia	Nationally scarce
<i>Gymnostomum calcareum</i>	Blunt-leaf Tufa-moss	Nationally scarce
<i>Gymnostomum viridulum</i>	Luisier's Tufa-moss	Nationally scarce
<i>Leptobarbula berica</i>	Beric Beard-moss	Nationally scarce
<i>Leucobryum glaucum</i>	Large White-moss	Annex 5
<i>Microbryum starckeanum</i>	Starke's Pottia	Nationally scarce
<i>Octodiceras fontanum</i>	Fountain Pocket-moss	Nationally scarce
<i>Plagiopus oederianus</i>	Oeder's Apple-moss	Nationally scarce
<i>Plagiothecium laetum</i>	Bright Silk-moss	Nationally scarce
<i>Platydictya jungermannioides</i>	Spruce's Leskea	Nationally scarce
<i>Platygyrium repens</i>	Flat-brocade Moss	Nationally scarce
<i>Pleurochaete squarrosa</i>	Side-fruited Crisp-moss	Nationally scarce
<i>Pottiopsis caespitosa</i>	Round-fruited Pottia	Nationally scarce
<i>Pylaisia polyantha</i>	Many-flowered Leskea	Nationally scarce
<i>Rhynchostegiella curviseta</i>	Curve-stalked Feather-moss	Nationally scarce
<i>Rhynchostegium alopecuroides</i>	Portuguese Feather-moss	Nationally scarce
<i>Rhytidium rugosum</i>	Wrinkle-leaved Feather-moss	Nationally scarce
<i>Schistidium robustum</i>	Robust Grimmia	Nationally scarce
<i>Schistidium strictum</i>	Upright Brown Grimmia	Nationally scarce
<i>Seligeria acutifolia</i>	Sharp Rock-bristle	Nationally scarce

<i>Seligeria pusilla</i>	Dwarf Rock-bristle	Nationally scarce
<i>Sphagnum flexuosum</i>	Flexuous Bog-moss	Nationally scarce
<i>Syntrichia virescens</i>	Lesser Screw-moss	Nationally scarce
<i>Thuidium abietinum</i> <i>subsp. abietinum</i>	Fir Tamarisk-moss	Nationally scarce
<i>Thuidium recognitum</i>	Lesser Tamarisk-moss	Nationally scarce
<i>Tortella densa</i>	Clint Crisp-moss	Nationally scarce
<i>Tortella inclinata</i>	Bent Crisp-moss	Nationally scarce
<i>Tortella inflexa</i>	Sassari Crisp-moss	Nationally scarce
Hornworts	(No hornworts of conservation concern recorded in Gloucestershire)	
Liverworts		
<i>Cephaloziella spinigera</i>	spiny threadwort	Nationally scarce
<i>Cephaloziella stellulifera</i>	heath threadwort	Nationally scarce
<i>Cladopodiella francisci</i>	Holt notchwort	Nationally scarce
<i>Cololejeunea rossettiana</i>	Rossetti's pouncewort	Nationally scarce
<i>Fossombronia caespitiformis</i>	Spanish frillwort	Nationally scarce
<i>Fossombronia husnotii</i>	Husnot's frillwort	Nationally scarce
<i>Jamesoniella autumnalis</i>	autumn flapwort	Nationally scarce
<i>Nardia geoscyphus</i>	earth-cup flapwort	Nationally scarce
<i>Riccia cavernosa</i>	cavernous crystalwort	Nationally scarce
<i>Riccia crozalsii</i>	ciliate crystalwort	Nationally scarce

Lichens		<i>JNCC checklist: 2011-01-21</i>
<i>Acarospora umbilicata</i>		Nationally scarce
<i>Arthonia endlicheri</i>		Nationally scarce
<i>Arthonia phaeobaea</i>		Nationally scarce
<i>Bacidia friesiana</i>		Nationally scarce
<i>Bacidia fuscoviridis</i>		Nationally scarce
<i>Buellia badia</i>		Nationally scarce
<i>Buellia pulverea</i>		Nationally scarce
<i>Buellia stellulata</i>		Nationally scarce
<i>Caloplaca chalybaea</i>		Nationally scarce
<i>Caloplaca crenulatella</i>		Nationally scarce
<i>Caloplaca ochracea</i>		Nationally scarce
<i>Caloplaca ulcerosa</i>		Nationally scarce
<i>Catapyrenium lachneum</i>		Nationally scarce

<i>Catapyrenium squamulosum</i>		Nationally scarce
<i>Chaenotheca brachypoda</i>		Nationally scarce
<i>Chaenotheca stemonea</i>		Nationally scarce
<i>Chaenothecopsis nigra</i>		Nationally scarce
<i>Clauzadea metzleri</i>		Nationally scarce
<i>Collema multipartitum</i>		Nationally scarce
<i>Collema polycarpon</i>		Nationally scarce
<i>Epilichen scabrosus</i>		Nationally scarce
<i>Fellhanera bouteillei</i>		Nationally scarce
<i>Hymenelia prevostii</i>		Nationally scarce
<i>Lecania cuprea</i>		Nationally scarce
<i>Lecanora albella</i>		Nationally scarce
<i>Lecanora albellula</i>		Nationally scarce
<i>Lecanora campestris</i> <i>subsp. dolomitica</i>		Nationally scarce
<i>Lecanora compallens</i>		Nationally scarce
<i>Lecanora epanora</i>		Nationally scarce
<i>Lecanora persimilis</i>		Nationally scarce
<i>Lecanora pruinosa</i>		Nationally scarce
<i>Lecanora stenotropa</i>		Nationally scarce
<i>Lecanora subaurea</i>		Nationally scarce
<i>Lecidea confluens</i>		Nationally scarce
<i>Lecidea doliiformis</i>		Nationally scarce
<i>Lepraria nivalis</i>		Nationally scarce
<i>Lepraria umbricola</i>		Nationally scarce
<i>Leptogium biatorinum</i>		Nationally scarce
<i>Leptogium intermedium</i>		Nationally scarce
<i>Leptogium tenuissimum</i>		Nationally scarce
<i>Micarea misella</i>		Nationally scarce
<i>Micarea prasina</i>		Nationally scarce
<i>Moelleropsis nebulosa</i>		Nationally scarce
<i>Ochrolechia microstictoides</i>		Nationally scarce
<i>Opegrapha corticola</i>		Nationally scarce
<i>Opegrapha dolomitica</i>		Nationally scarce
<i>Opegrapha mougeotii</i>		Nationally scarce
<i>Peltigera neckeri</i>		Nationally scarce

<i>Pertusaria excludens</i>		Nationally scarce
<i>Polyblastia agraria</i>		Nationally scarce
<i>Polyblastia albida</i>		Nationally scarce
<i>Polyblastia deminuta</i>		Nationally scarce
<i>Polyblastia dermatodes</i>		Nationally scarce
<i>Psora lurida</i>		Nationally scarce
<i>Psoroglaena stigonemoides</i>		Nationally scarce
<i>Rhizocarpon viridiatrum</i>		Nationally scarce
<i>Rinodina bischoffii</i>		Nationally scarce
<i>Rinodina efflorescens</i>		Nationally scarce
<i>Ropalospora viridis</i>		Nationally scarce
<i>Solorina spongiosa</i>		Nationally scarce
<i>Staurothele caesia</i>		Nationally scarce
<i>Steinia geophana</i>		Nationally scarce
<i>Strangospora moriformis</i>		Nationally scarce
<i>Strigula taylorii</i>		Nationally scarce
<i>Thelidium minutulum</i>		Nationally scarce
<i>Thelidium zwackhii</i>		Nationally scarce
<i>Verrucaria bryoctona</i>		Nationally scarce
<i>Verrucaria dufourii</i>		Nationally scarce
<i>Verrucaria elaeina</i>		Nationally scarce
<i>Verrucaria elaeomelaena</i>		Nationally scarce
<i>Verrucaria murina</i>		Nationally scarce
<i>Verrucaria rheitrophila</i>		Nationally scarce
<i>Vezeadaea retigera</i>		Nationally scarce
<i>Xanthoria ucrainica</i>		Nationally scarce

Fungi	Mushrooms, moulds and relatives	
<i>(All S2 fungi are of high conservation concern and are listed in Table S2a.)</i>		

S3 – Birds and Animals

Birds and animals of high conservation concern in Gloucestershire

In order to avoid duplicating species entries, this table is for use with all of the following selection thresholds:

S3.1 – Any site on which any size of population of a bird or animal species of high conservation concern from Appendix 3, Table S3, has been recorded and confirmed as present within the last five years. Only sites relevant to the conservation of the species in question will be selected.

S3.2 – Any site on which a population of species from Appendix 3, Table S3 has been recorded and confirmed as present within the last five years, where that population is over a certain minimum size. The qualifying sizes are listed individually for the groups concerned. Only sites relevant to the conservation of the species in question will be selected.

S3.3 – Any site supporting a significant assemblage of different species from Appendix 3, Table S3.

S3.4 – Any site supporting a significant assemblage of breeding birds as described in Table S4.

S3.5 – Good examples of sites which support species listed in Table S3 which are known to be becoming increasingly scarce nationally through habitat loss and degradation, but which are not yet scarce or rare in Gloucestershire

S3.6 – Good examples of sites which support species listed in Table S3 which are known to be especially rare and/or declining in Gloucestershire or adjacent vice-counties, but which are not yet identified as nationally scarce.

In a few cases, special habitat criteria will apply – see Section H12.

The relevant selection threshold categories are listed in the Selection threshold column for each species; some fit more than one of the above categories. For more details on the relevant minimum thresholds and guidelines for key species groups see Part 2, Section 2.6.

Table S3 – Birds and animals of conservation concern in Gloucestershire			
Species	Common name	Status	Selection threshold
INVERTEBRATES			
<i>Crustacea</i>	Crustaceans	<i>JNCC checklist: 2014-08-22</i>	
<i>Austropotamobius pallipes</i>	White-Clawed Crayfish	UK Priority Species, Schedule 5, Habitats Directive Annex 2 & Annex 5, IUCN Red List Endangered, Bern Convention Appendix 3	S3.1; also Special habitat: see section H12.1
<i>Hymenoptera</i>	<i>Bees, Wasps and Ants</i>		
	<i>Bees and wasps</i>	<i>JNCC checklist: 2011-01-21</i>	
<i>Ammophila sabulosa</i>		Rare in Gloucestershire	S3.6
<i>Auplopus carbonarius</i>		Nationally Notable B	S3.2
<i>Bombus (Psithyrus) rupestris</i>	Hill Cuckoo Bee	Nationally Notable B	S3.2
<i>Chrysura radians</i>		Nationally Notable A	S3.1
<i>Cleptes semiauratus</i>		Nationally Notable B	S3.2
<i>Coelioxys (Coelioxys) quadridentata</i>		IUCN Red List Rare	S3.1
<i>Crabro scutellatus</i>		Nationally Notable A; Glos is on northwest edge of range	S3.1
<i>Crossocerus (Blepharipus) walkeri</i>		Nationally Notable B	S3.2
<i>Crossocerus (Cuphopterus) binotatus</i>		Nationally Notable B	S3.2
<i>Didineis lunicornis</i>		Nationally Notable A	S3.1
<i>Dipogon (Deuteragenia) bifasciatus</i>		IUCN Red List Rare	S3.1
<i>Dolichovespula (Dolichovespula) media</i>		Nationally Notable A	S3.1
<i>Ectemnius (Clytochrysus) ruficornis</i>		Nationally Notable B	S3.2
<i>Ectemnius (Clytochrysus)</i>		Nationally Notable B	S3.2

<i>sexcinctus</i>			
<i>Eucera (Eucera) longicornis</i>	Long-horned Bee	UK Priority Species; Nationally Notable A	S3.1
<i>Lasioglossum (Dialictus) leucopus</i>		IUCN Red List Rare	S3.1
<i>Lasioglossum (Evylaeus) malachurum</i>		Nationally Notable B	S3.2
<i>Lasioglossum (Evylaeus) pauxillum</i>		Nationally Notable A	S3.1
<i>Lasioglossum (Evylaeus) puncticolle</i>		Nationally Notable B	S3.2
<i>Lasioglossum (Lasioglossum) xanthopus</i>	Yellow Footed Mining Bee	Nationally Notable B	S3.2
<i>Microdynerus exilis</i>		Nationally Notable B	S3.2
<i>Monosapyga clavicornis</i>		Nationally Notable B	S3.2
<i>Nomada ferruginata</i>		IUCN Red List Endangered	S3.1
<i>Nomada flavopicta</i>		Nationally Notable B	S3.2
<i>Nomada fucata</i>		Nationally Notable A	S3.1
<i>Nomada hirtipes</i>		IUCN Red List Rare	S3.1
<i>Nomada integra</i>		Nationally Notable A	S3.1
<i>Nomada lathburiana</i>		IUCN Red List Rare	S3.1
<i>Nomada signata</i>		IUCN Red List Vulnerable	S3.1
<i>Nysson dimidiatus</i>	Small Spurred Digger Wasp	Nationally Notable B	S3.2
<i>Odynerus (Odynerus) melanocephalus</i>	Black Headed Mason Wasp	UK Priority Species, Nationally Notable A	S3.1
<i>Omalus puncticollis</i>		Nationally Notable A	S3.1
<i>Osmia (Melanosmia) pilicornis</i>	Fringe Horned Mason Bee	Nationally Notable A	S3.1
<i>Osmia (Melanosmia) xanthomelana</i>	Large Mason Bee	UK Priority Species, IUCN Red List Endangered	S3.1
<i>Osmia (Neosmia) bicolor</i>	Two Coloured Mason Bee	Nationally Notable B	S3.2
<i>Pemphredon (Ceratophorus) morio</i>		Nationally Notable B	S3.2
<i>Philanthus triangulum</i>	Bee Wolf	IUCN Red List Vulnerable	S3.1
<i>Priocnemis (Priocnemis) gracilis</i>		Nationally Notable B	S3.2
<i>Priocnemis (Priocnemis) schioedtei</i>		Nationally Notable B	S3.2
<i>Priocnemis (Umbripennis) coriacea</i>		Nationally Notable A	S3.1

<i>Sphecodes crassus</i>		Nationally Notable B	S3.2
<i>Sphecodes ferruginatus</i>		Nationally Notable B	S3.2
<i>Sphecodes niger</i>		IUCN Red List Rare	S3.1
<i>Sphecodes reticulatus</i>		Nationally Notable A	S3.1
<i>Sphecodes rubicundus</i>		Nationally Notable A	S3.1
<i>Sphecodes spinulosus</i>		IUCN Red List Vulnerable	S3.1
<i>Stelis ornatula</i>		IUCN Red List Rare	S3.1
<i>Stelis phaeoptera</i>		IUCN Red List Vulnerable	S3.1
<i>Stelis punctulatissima</i>		Nationally Notable B	S3.2
<i>Stigmus pendulus</i>		IUCN Red List – Insufficiently known; Glos thought to be at westernmost edge of range	S3.1
<i>Tiphia minuta</i>	Small Tiphia	Nationally Notable B	S3.2

	Ants	<i>JNCC checklist: 2014-08-22</i>	
<i>Formica rufa</i>	Red wood-ant	IUCN Red List Near Threatened; declining in previous UK strongholds; good population in Forest of Dean	S3.1; S3.5
<i>Formica sanguinea</i>	Blood-red <i>or</i> Slave-maker ant	Nationally Notable B, fewer than 10 known sites in Gloucestershire	S3.2, S3.6
<i>Formicoxulus nitidulus</i>	Shining guest ant	UK Priority Species (NERC Act S41); fewer than 10 known sites in Gloucestershire	S3.2, S3.6
<i>Lasius mixtus</i>		Fewer than 10 known sites in Gloucestershire	S3.6
<i>Lasius umbratus</i>	a parasitic ant	Fewer than 10 known sites in Gloucestershire	S3.6
<i>Myrmica hirsuta</i>	(found near, but not in, Gloucestershire)	IUCN Red List Vulnerable	S3.1
<i>Myrmica schencki</i>	(found near, but not in, Gloucestershire)	Nationally Notable B	S3.1
<i>Stenammas debile</i>	a leaf-litter ant	Fewer than 10 known sites in Gloucestershire	S3.6

Coleoptera	Beetles... lots of beetles	<i>JNCC checklist: 2014-08-22</i>	
<i>Abdera biflexuosa</i>		Nationally Notable B	S3.2
<i>Acalles ptinoides</i>		Nationally Notable B	S3.2
<i>Acanthocinus aedilis</i>	Timberman	Nationally Notable B	S3.2

<i>Achenium humile</i>		Nationally Notable B	S3.2
<i>Acidota cruentata</i>		Nationally Notable B	S3.2
<i>Aclypea opaca</i>	Beet Carrion Beetle	Nationally Notable A	S3.1
<i>Aclypea undata</i>		IUCN Red List Endangered	S3.1
<i>Acupalpus exiguus</i>		Nationally Notable B	S3.2
<i>Adonia variegata</i>		Nationally Notable B	S3.2
<i>Agabus undulatus</i>		IUCN Red List Rare	S3.1
<i>Agabus biguttatus</i>		Nationally Notable B	S3.2
<i>Agabus melanarius</i>		Nationally Notable B	S3.2
<i>Agathidium marginatum</i>		Nationally Notable	S3.2
<i>Agonum nigrum</i>		Nationally Notable B	S3.2
<i>Agonum sexpunctatum</i>		Nationally Notable A	S3.1
<i>Agonum versutum</i>		Nationally Notable B	S3.2
<i>Agonum scitulum</i>		UK Priority Species, Nationally Notable A	S3.2
<i>Agonum livens</i>		Nationally Notable B	S3.2
<i>Agrilus angustulus</i>		Nationally Notable B	S3.2
<i>Agrilus biguttatus</i>	Two-Spot Wood-Borer	Nationally Notable A	S3.1
<i>Agrilus laticornis</i>		Nationally Notable B	S3.2
<i>Agrilus sinuatus</i>	Hawthorn Jewel Beetle	Nationally Notable A	S3.1
<i>Aleochara discipennis</i>		Nationally Notable	S3.2
<i>Aloconota longicollis</i>		Nationally Notable	S3.2
<i>Altica brevicollis</i>		Nationally Notable A	
<i>Amara nitida</i>		Nationally Notable A	
<i>Amara consularis</i>		Nationally Notable B	S3.2
<i>Amara fulva</i>		Nationally Notable B	S3.2
<i>Amara equestris</i>		Nationally Notable B	S3.2
<i>Ampedus cinnabarinus</i>		IUCN Red List Rare	S3.1
<i>Ampedus nigrinus</i>		Nationally Notable B	S3.2
<i>Ampedus pomorum</i>		Nationally Notable B	S3.2
<i>Ampedus rufipennis</i>	Red-horned Cardinal Click Beetle	UK Priority Species, IUCN Red List Vulnerable	S3.1
<i>Anacaena bipustulata</i>		Nationally Notable B	S3.2
<i>Anaglyptus mysticus</i>		Nationally Notable B	S3.2
<i>Ancistronycha abdominalis</i>	Blue Soldier Beetle	Nationally Notable B	S3.2
<i>Anisoxya fuscula</i>		Nationally Notable A	S3.1

<i>Anitys rubens</i>		Nationally Notable B	S3.2
<i>Anobium inexpectatum</i>		Nationally Notable B	S3.2
<i>Anoplodera sexguttata</i>	6 Spotted Longhorn	IUCN Red List Rare	S3.1
<i>Anostirus castaneus</i>	Chestnut coloured click beetle	UK Priority Species, IUCN Red List Endangered	S3.1
<i>Anotylus fairmairei</i>		IUCN (pre 1994) – Insufficiently known	S3.2
<i>Anotylus insecatus</i>		Nationally Notable	S3.2
<i>Anotylus saulcyi</i>		Nationally Notable	S3.2
<i>Anthonomus ulmi</i>		Nationally Notable B	S3.2
<i>Anthracus consputus</i>		Nationally Notable B	S3.2
<i>Anthribus fasciatus</i>		Nationally Notable A	S3.1
<i>Anthribus nebulosus</i>		Nationally Notable B	S3.2
<i>Aphanisticus pusillus</i>		Nationally Notable B	S3.2
<i>Aphodius sordidus</i>		Nationally Notable A	S3.1
<i>Aphodius conspurcatus</i>		Nationally Notable B	S3.2
<i>Aphodius distinctus</i>		Nationally Notable B	S3.2
<i>Aphodius zenkeri</i>		Nationally Notable B	S3.2
<i>Aphodius fasciatus</i>		Nationally Notable B	S3.2
<i>Aphthona nigriceps</i>		Nationally Notable A	S3.1
<i>Aplocnemus nigricornis</i>		Nationally Notable A	S3.1
<i>Apteropeda globosa</i>		Nationally Notable B	S3.2
<i>Archarius villosus</i>		Nationally Notable B	S3.2
<i>Aromia moschata</i>	Musk Beetle	Nationally Notable B	S3.2
<i>Astenus procerus</i>		IUCN (pre 1994) – Insufficiently known	S3.2
<i>Astenus immaculatus</i>		Nationally Notable	S3.2
<i>Atheta aquatilis</i>		Nationally Notable	S3.2
<i>Atomaria atra</i>		Nationally Notable	S3.2
<i>Atomaria nigripennis</i>		Nationally Notable	S3.2
<i>Atomaria rubricollis</i>		IUCN (pre 1994) – Indeterminate	S3.2
<i>Atomaria fimetarii</i>		Nationally Notable	S3.2
<i>Atomaria nigriventris</i>		Nationally Notable	S3.2
<i>Atomaria umbrina</i>		Nationally Notable	S3.2

<i>Attactagenus plumbeus</i>		Nationally Notable B	S3.2
<i>Aulacobaris lepidii</i>		Nationally Notable A	S3.1
<i>Badister meridionalis</i>		IUCN (pre 1994) – Indeterminate	S3.2
<i>Badister unipustulatus</i>		Nationally Notable B	S3.2
<i>Bagous alismatis</i>		Nationally Notable B	S3.2
<i>Bembidion quadripustulatum</i>	Scarce Four-dot Pin-palp	UK Priority Species, Nationally Notable B	S3.2
<i>Bembidion</i>		Nationally Notable B	S3.2
<i>Bembidion nigricorne</i>		Nationally Notable B	S3.2
<i>Bembidion semipunctatum</i>		Nationally Notable A	S3.1
<i>Bembidion fluviatile</i>		Nationally Notable B	S3.2
<i>Bembidion lunatum</i>		Nationally Notable B	S3.2
<i>Bembidion monticola</i>		Nationally Notable B	S3.2
<i>Bembidion saxatile</i>		Nationally Notable B	S3.2
<i>Bembidion gilvipes</i>		Nationally Notable B	S3.2
<i>Bembidion bipunctatum</i>		Nationally Notable B	S3.2
<i>Berosus affinis</i>		Nationally Notable B	S3.2
<i>Berosus signaticollis</i>		Nationally Notable B	S3.2
<i>Blemus discus</i>		Nationally Notable B	S3.2
<i>Blethisa multipunctata</i>		Nationally Notable B	S3.2
<i>Bolitochara pulchra</i>		Nationally Notable	S3.2
<i>Brachinus crepitans</i>	Bombardier Beetle	Nationally Notable B	S3.2
<i>Brachygluta waterhousei</i>		Nationally Notable	S3.2
<i>Brachysomus echinatus</i>		Nationally Notable B	S3.2
<i>Brachysomus hirtus</i>		IUCN Red List Rare	S3.1
<i>Brachyusa concolor</i>		Nationally Notable	S3.2
<i>Bruchus atomarius</i>		Nationally Notable B	S3.2
<i>Byctiscus betulae</i>	Hazel Leaf Roller	Nationally Notable B	S3.2
<i>Calambus bipustulatus</i>		Nationally Notable B	S3.2
<i>Calomicrus circumfusus</i>		Nationally Notable A	S3.1
<i>Calosirus terminatus</i>		Nationally Notable B	S3.2
<i>Calosoma inquisitor</i>	Lesser Searcher/	UK Priority Species, Nationally	S3.1

	Caterpillar hunter	Notable A	
<i>Cantharis fusca</i>		IUCN Red List Rare	S3.1
<i>Carabus monilis</i>	Necklace Ground Beetle	UK Priority Species, Nationally Notable B	S3.2
<i>Carpelimus fuliginosus</i>		Nationally Notable	S3.2
<i>Carpelimus subtilis</i>		Nationally Notable	S3.2
<i>Cassida nobilis</i>		Nationally Notable B	S3.2
<i>Cassida prasina</i>		Nationally Notable B	S3.2
<i>Cercyon alpinus</i>		IUCN (pre 1994) – Insufficiently known	S3.2
<i>Cercyon bifenestratus</i>		Nationally Notable A	S3.1
<i>Cercyon convexiusculus</i>		Nationally Notable B	S3.2
<i>Cercyon granarius</i>		IUCN Red List Rare	S3.1
<i>Cercyon nigriceps</i>		Nationally Notable B	S3.2
<i>Cercyon sternalis</i>		Nationally Notable B	S3.2
<i>Cercyon tristis</i>		Nationally Notable B	S3.2
<i>Cercyon ustulatus</i>		Nationally Notable B	S3.2
<i>Cerylon fagi</i>		Nationally Notable B	S3.2
<i>Ceutorhynchus constrictus</i>		Nationally Notable B	S3.2
<i>Ceutorhynchus hirtulus</i>		Nationally Notable B	S3.2
<i>Ceutorhynchus insularis</i>	Weevil	IUCN Red List Endangered	S3.1
<i>Ceutorhynchus punctiger</i>		Nationally Notable B	S3.2
<i>Ceutorhynchus syrtes</i>		IUCN Red List Endangered	S3.1
<i>Ceutorhynchus thomsoni</i>		IUCN (pre 1994) – Insufficiently known	S3.2
<i>Chaetarthria seminulum</i>		Nationally Notable B	S3.2
<i>Chaetocnema sahlbergii</i>		Nationally Notable A	S3.1
<i>Chlaenius nigricornis</i>		Nationally Notable B	S3.2
<i>Choleva glauca</i>		Nationally Notable	S3.2
<i>Chrysolina haemoptera</i>	Plantain Leaf Beetle	Nationally Notable B	S3.2
<i>Chrysolina marginata</i>		Nationally Notable A	S3.1
<i>Chrysolina oricalcia</i>		Nationally Notable B	S3.2

<i>Chrysolina sanguinolenta</i>	Toadflax Leaf Beetle	Nationally Notable A	S3.1
<i>Chrysolina violacea</i>		Nationally Notable B	S3.2
<i>Chrysomela tremula</i>		IUCN Red List Endangered	S3.1
<i>Cicones variegatus</i>		Nationally Notable A	S3.1
<i>Cionus nigratarsis</i>		Nationally Notable A	S3.1
<i>Cis festivus</i>		Nationally Notable B	S3.2
<i>Clanoptilus marginellus</i>		Nationally Notable B	S3.2
<i>Claviger testaceus</i>	Yellow Ants'-Nest Beetle	Nationally Notable	S3.2
<i>Cleopomiarus graminis</i>		Nationally Notable B	S3.2
<i>Cleopomiarus plantarum</i>		IUCN (pre 1994) – Insufficiently known	S3.2
<i>Coccinella magnifica</i>	Scarce Seven-Spot Ladybird	Nationally Notable A	S3.1
<i>Coccinella quinquepunctata</i>	Five-Spot Ladybird	IUCN Red List Rare	S3.1
<i>Coeliodes ruber</i>		Nationally Notable B	S3.2
<i>Coeliodes transversealbofasciatus</i>		Nationally Notable B	S3.2
<i>Colon zebei</i>		IUCN (pre 1994) – Insufficiently known	S3.2
<i>Conopalpus testaceus</i>		Nationally Notable B	S3.2
<i>Cossonus parallelepipedus</i>		Nationally Notable B	S3.2
<i>Crepidodera nitidula</i>		Nationally Notable B	S3.2
<i>Crudosilis ruficollis</i>		Nationally Notable B	S3.2
<i>Cryptarcha strigata</i>		Nationally Notable B	S3.2
<i>Cryptarcha undata</i>		Nationally Notable B	S3.2
<i>Cryptocephalus aureolus</i>		Nationally Notable B	S3.2
<i>Cryptocephalus bilineatus</i>		Nationally Notable B	S3.2
<i>Cryptocephalus bipunctatus</i>		Nationally Notable B	S3.2
<i>Cryptocephalus frontalis</i>		Nationally Notable A	S3.1

<i>Cryptocephalus nitidulus</i>	Shining Pot Beetle	UK Priority Species, IUCN Red List Endangered	S3.1
<i>Cryptocephalus primarius</i>	Rock-rose Pot Beetle	UK Priority Species	S3.2
<i>Cryptocephalus sexpunctatus</i>	6 spotted pot beetle	IUCN Red List Vulnerable	S3.1
<i>Cryptocephalus sexpunctatus</i>	Six-spotted Pot Beetle	UK Priority Species, IUCN Red List Vulnerable	S3.1
<i>Cryptophagus angustus</i>		Nationally Notable	S3.2
<i>Cryptophagus intermedius</i>		IUCN (pre 1994) – Insufficiently known	S3.2
<i>Cryptophagus ruficornis</i>		Nationally Notable	S3.2
<i>Cryptopleurum crenatum</i>		Nationally Notable	S3.2
<i>Cryptorhynchus lapathi</i>	Withy Weevil	Nationally Notable B	S3.2
<i>Ctenicera pectinicornis</i>		Nationally Notable A	S3.1
<i>Ctesias serra</i>	Cobweb Beetle	Nationally Notable B	S3.2
<i>Curculio betulae</i>		Nationally Notable B	S3.2
<i>Cypha seminulum</i>		IUCN (pre 1994) – Insufficiently known	S3.2
<i>Cyphon pubescens</i>		Nationally Notable B	S3.2
<i>Dasygnypeta velata</i>		Nationally Notable	S3.2
<i>Dasytes niger</i>		Nationally Notable A	S3.1
<i>Deleaster dichrous</i>		Nationally Notable B	S3.2
<i>Dendroxena quadrimaculata</i>		Nationally Notable B	S3.2
<i>Dexiogyia corticina</i>		Nationally Notable	S3.2
<i>Dinoptera collaris</i>		IUCN Red List Endangered	S3.1
<i>Dinothenarus pubescens</i>		Nationally Notable B	S3.2
<i>Diplocoelus fagi</i>		Nationally Notable B	S3.2
<i>Dissoleucas niveirostris</i>		IUCN Red List Vulnerable	S3.1
<i>Dochmonota clancula</i>		Nationally Notable	S3.2
<i>Donacia aquatica</i>	Zircon Reed Beetle	UK Priority Species, IUCN Red List Rare	S3.1

<i>Donacia bicolora</i>	Two-tone Reed Beetle	UK Priority Species, IUCN Red List Vulnerable	S3.1
<i>Donacia cinerea</i>		Nationally Notable B	S3.2
<i>Donacia clavipes</i>		Nationally Notable B	S3.2
<i>Donacia crassipes</i>	Water-Lily Reed Beetle	Nationally Notable B	S3.2
<i>Donacia dentata</i>		Nationally Notable A	S3.1
<i>Donacia sparganii</i>		Nationally Notable A	S3.1
<i>Donacia thalassina</i>		Nationally Notable B	S3.2
<i>Dorcatoma flavicornis</i>		Nationally Notable B	S3.2
<i>Dorytomus filirostris</i>		Nationally Notable B	S3.2
<i>Drupenatus nasturtii</i>		Nationally Notable B	S3.2
<i>Dryops similaris</i>		IUCN Red List Rare	S3.1
<i>Dyschirius impunctipennis</i>		Nationally Notable B	S3.2
<i>Dyschirius nitidus</i>		Nationally Notable A	S3.1
<i>Dytiscus circumflexus</i>		Nationally Notable B	S3.2
<i>Elaphropus parvulus</i>		Nationally Notable B	S3.2
<i>Elaphrus uliginosus</i>		Nationally Notable B	S3.2
<i>Eledona agricola</i>		Nationally Notable B	S3.2
<i>Ellescus bipunctatus</i>		Nationally Notable B	S3.2
<i>Elodes elongata</i>		IUCN (pre 1994) – Indeterminate	S3.2
<i>Emus hirtus</i>	Hairy Rove-Beetle	IUCN Red List Endangered	S3.1
<i>Enicmus brevicornis</i>		Nationally Notable	S3.2
<i>Enicocerus exsculptus</i>		Nationally Notable B	S3.2
<i>Enochrus melanocephalus</i>		Nationally Notable B	S3.2
<i>Enochrus ochropterus</i>		Nationally Notable B	S3.2
<i>Epitrix atropae</i>	Belladonna Flea Beetle	Nationally Notable B	S3.2
<i>Epuraea guttata</i>		Nationally Notable B	S3.2
<i>Epuraea longula</i>		Nationally Notable B	S3.2
<i>Ernoporicus caucasicus</i>		IUCN Red List Endangered	S3.1
<i>Ernoporicus fagi</i>		Nationally Notable A	S3.1
<i>Ernoporus tiliae</i>	Bast bark beetle	IUCN Red List Endangered	S3.1
<i>Eubrychius velutus</i>		Nationally Notable B	S3.2
<i>Eucnemis capucina</i>	False click beetle	IUCN Red List Endangered	S3.1
<i>Euglenes oculatus</i>		Nationally Notable B	S3.2
<i>Euheptaulacus villosus</i>		Nationally Notable A	S3.1

<i>Euplectus tholini</i>		IUCN Red List Rare	S3.1
<i>Eutheia linearis</i>		IUCN Red List Endangered	S3.1
<i>Exapion difficile</i>		Nationally Notable A	S3.1
<i>Falagria sulcatula</i>		Nationally Notable	S3.2
<i>Gabrius bishopi</i>		Nationally Notable B	S3.2
<i>Gabrius velox</i>		Nationally Notable B	S3.2
<i>Gastrallus immarginatus</i>	Maple wood-boring beetle	IUCN Red List Endangered	S3.1
<i>Georissus crenulatus</i>		Nationally Notable A	S3.1
<i>Geotrupes mutator</i>		Nationally Notable B	S3.2
<i>Glaphyra umbellatarum</i>		Nationally Notable A	S3.1
<i>Globicornis nigripes</i>		IUCN Red List Endangered	S3.1
<i>Gnorimus nobilis</i>	Noble Chafer	UK Priority Species, IUCN Red List Vulnerable	S3.1
<i>Gonioctena decemnotata</i>		Nationally Notable B	S3.2
<i>Gracilia minuta</i>		IUCN Red List Vulnerable	S3.1
<i>Grammoptera abdominalis</i>		Nationally Notable A	S3.1
<i>Grammoptera ustulata</i>		IUCN Red List Rare	S3.1
<i>Graptodytes bilineatus</i>		IUCN Red List Rare	S3.1
<i>Grypus equiseti</i>	Horsetail Weevil	Nationally Notable B	S3.2
<i>Gymnetron beccabungae</i>		Nationally Notable A	S3.1
<i>Gymnetron melanarium</i>		Nationally Notable B	S3.2
<i>Gymnetron veronicae</i>	Brooklime Gull Weevil	Nationally Notable B	S3.2
<i>Gymnetron villosulum</i>		Nationally Notable B	S3.2
<i>Gyrinus urinator</i>		Nationally Notable B	S3.2
<i>Gyrophana manca</i>		Nationally Notable	S3.2
<i>Gyrophana strictula</i>		Nationally Notable	S3.2
<i>Hadrobregmus denticollis</i>		Nationally Notable B	S3.2
<i>Hadroplontus trimaculatus</i>		Nationally Notable B	S3.2
<i>Haliphus heydeni</i>		Nationally Notable B	S3.2
<i>Haliphus laminatus</i>		Nationally Notable B	S3.2
<i>Hallomenus binotatus</i>		Nationally Notable B	S3.2

<i>Harpalus tenebrosus</i>		Nationally Notable A	S3.1
<i>Hedobia imperialis</i>		Nationally Notable B	S3.2
<i>Helochares lividus</i>		Nationally Notable B	S3.2
<i>Helochares punctatus</i>		Nationally Notable B	S3.2
<i>Helophorus arvernicus</i>		Nationally Notable B	S3.2
<i>Helophorus dorsalis</i>		Nationally Notable B	S3.2
<i>Helophorus fulgidicollis</i>		Nationally Notable B	S3.2
<i>Helophorus griseus</i>		Nationally Notable B	S3.2
<i>Helophorus longitarsis</i>		IUCN Red List Rare	S3.1
<i>Helophorus nanus</i>		Nationally Notable B	S3.2
<i>Helophorus strigifrons</i>		Nationally Notable B	S3.2
<i>Helops caeruleus</i>		Nationally Notable B	S3.2
<i>Hemitrichapion reflexum</i>		Nationally Notable A	S3.1
<i>Heterothops dissimilis</i>		IUCN (pre 1994) – Insufficiently known	S3.2
<i>Hydraena nigrita</i>		Nationally Notable B	S3.2
<i>Hydraena pygmaea</i>		IUCN Red List Rare	
<i>Hydraena rufipes</i>		Nationally Notable B	S3.2
<i>Hydraena testacea</i>		Nationally Notable B	S3.2
<i>Hydrochara caraboides</i>	Lesser Silver Water Beetle	IUCN Red List Endangered, Schedule 5	S3.1
<i>Hydrochus angustatus</i>		Nationally Notable B	S3.2
<i>Hydrochus elongatus</i>		IUCN Red List Rare	
<i>Hydroglyphus geminus</i>		Nationally Notable B	S3.2
<i>Hydroporus ferrugineus</i>		Nationally Notable B	S3.2
<i>Hydroporus longulus</i>		Nationally Notable B	S3.2
<i>Hydroporus marginatus</i>		Nationally Notable B	S3.2
<i>Hydrosmecta longula</i>		Nationally Notable	S3.2
<i>Hylecoetus dermestoides</i>		Nationally Notable B	S3.2
<i>Hypera fuscocinerea</i>		Nationally Notable B	S3.2
<i>Hyperaspis pseudopustulata</i>		Nationally Notable B	S3.2
<i>Hypopycna rufula</i>		IUCN (pre 1994) –	S3.2

		Insufficiently known	
<i>Hypulus quercinus</i>		IUCN Red List Vulnerable	S3.1
<i>Ilybius chalconatus</i>		Nationally Notable B	S3.2
<i>Ilybius fenestratus</i>		Nationally Notable B	S3.2
<i>Ilybius guttiger</i>		Nationally Notable B	S3.2
<i>Ilybius subaeneus</i>		Nationally Notable B	S3.2
<i>Ilyobates bennetti</i>		Nationally Notable	S3.2
<i>Involvulus cupreus</i>		Nationally Notable B	S3.2
<i>Ischnodes sanguinicollis</i>		Nationally Notable A	S3.1
<i>Ischnomera caerulea</i>		IUCN Red List Rare	S3.1
<i>Ischnomera cyanea</i>		Nationally Notable B	S3.2
<i>Ischnomera sanguinicollis</i>		Nationally Notable B	S3.2
<i>Ischnopoda scitula</i>		IUCN (pre 1994) – Insufficiently known	S3.2
<i>Korynetes caeruleus</i>		Nationally Notable B	S3.2
<i>Laccobius sinuatus</i>		Nationally Notable B	S3.2
<i>Lamia textor</i>	Pine Sawyer	IUCN Red List Endangered	S3.1
<i>Lamprinodes saginatus</i>		Nationally Notable A	S3.1
<i>Lamprohiza splendidula</i>		Extinct	S3.1
<i>Lampyris noctiluca</i>	Glow worm	Declining nationally; Glos is a stronghold	S3.5
<i>Larinus planus</i>		Nationally Notable B	S3.2
<i>Lasiorhynchites cavifrons</i>		Nationally Notable B	S3.2
<i>Lasiorhynchites olivaceus</i>		Nationally Notable A	S3.1
<i>Lathrobium angustatum</i>		Nationally Notable B	S3.2
<i>Lebia chlorocephala</i>		Nationally Notable B	S3.2
<i>Leiodes cinnamomea</i>		Nationally Notable	S3.2
<i>Leiosoma oblongulum</i>		Nationally Notable B	S3.2
<i>Lepturobosca virens</i>		Extinct	S3.1
<i>Licinus depressus</i>		Nationally Notable B	S3.2
<i>Licinus punctatulus</i>		Nationally Notable A	S3.1
<i>Limnebius nitidus</i>		Nationally Notable B	S3.2

<i>Limnebius papposus</i>		Nationally Notable B	S3.2
<i>Limobius borealis</i>		Nationally Notable A	S3.1
<i>Limoniscus violaceus</i>	Violet Click Beetle	UK Priority Species, IUCN Red List Endangered, Schedule 5, Habitats Directive Annex 2	S3.1
<i>Liocyrtusa minuta</i>		Nationally Notable	S3.2
<i>Liogluta pagana</i>		Nationally Notable	S3.2
<i>Lissodema cursor</i>		Nationally Notable A	S3.1
<i>Lissodema denticolle</i>		Nationally Notable B	S3.2
<i>Lomechusoides strumosus</i>		IUCN (pre 1994) – Indeterminate	S3.2
<i>Longitarsus aeneicollis</i>		Nationally Notable B	S3.2
<i>Longitarsus agilis</i>		Nationally Notable A	S3.1
<i>Longitarsus anchusae</i>		Nationally Notable B	S3.2
<i>Longitarsus brunneus</i>		Nationally Notable B	S3.2
<i>Longitarsus curtus</i>		Nationally Notable A	S3.1
<i>Longitarsus dorsalis</i>		Nationally Notable B	S3.2
<i>Longitarsus ferrugineus</i>	Mint Flea Beetle	IUCN Red List Endangered	S3.1
<i>Longitarsus fowleri</i>		Nationally Notable A	S3.1
<i>Longitarsus ganglbaueri</i>		Nationally Notable A	S3.1
<i>Longitarsus lycopi</i>		Nationally Notable B	S3.2
<i>Longitarsus nasturtii</i>		Nationally Notable B	S3.2
<i>Longitarsus ochroleucus</i>		Nationally Notable B	S3.2
<i>Longitarsus parvulus</i>	Flax Flea Beetle	Nationally Notable A	S3.1
<i>Longitarsus plantagomaritimus</i>		Nationally Notable B	S3.2
<i>Longitarsus pratensis</i>		IUCN (pre 1994) – Insufficiently known	S3.2
<i>Lucanus cervus</i>	Stag Beetle	UK Priority Species, Nationally Notable B, Schedule 5, Bern Convention Appendix 3, Habitats Directive Annex 2	S3.1
<i>Luperus flavipes</i>		Nationally Notable B	S3.2
<i>Lycoperdina bovistae</i>		IUCN Red List Rare	S3.1
<i>Macronychus</i>		IUCN Red List Rare	S3.1

<i>quadrituberculatus</i>			
<i>Magdalis carbonaria</i>		Nationally Notable B	S3.2
<i>Magdalis barbicornis</i>	Pear Weevil	Nationally Notable A	S3.1
<i>Magdalis cerasi</i>		Nationally Notable B	S3.2
<i>Malachius aeneus</i>	Scarlet Malachite Beetle	UK Priority Species, IUCN Red List Rare	S3.1
<i>Malthinus balteatus</i>		Nationally Notable B	S3.2
<i>Malthinus frontalis</i>		Nationally Notable B	S3.2
<i>Malthodes crassicornis</i>		IUCN Red List Rare	S3.1
<i>Malthodes fibulatus</i>		Nationally Notable B	S3.2
<i>Malthodes guttifer</i>		Nationally Notable B	S3.2
<i>Malthodes maurus</i>		Nationally Notable B	S3.2
<i>Mantura chrysanthemi</i>		Nationally Notable A	S3.1
<i>Mantura obtusata</i>		Nationally Notable B	S3.2
<i>Mantura rustica</i>		Nationally Notable B	S3.2
<i>Medon fuscus</i>		IUCN (pre 1994) – Indeterminate	S3.2
<i>Megapenthes lugens</i>	The Queen's Executioner	UK Priority Species, IUCN Red List Endangered	S3.1
<i>Megatoma undata</i>		Nationally Notable B	S3.2
<i>Melandrya caraboides</i>		Nationally Notable B	S3.2
<i>Melanobaris laticollis</i>		Nationally Notable A	S3.1
<i>Melasis buprestoides</i>		Nationally Notable B	S3.2
<i>Meligethes atramentarius</i>		Nationally Notable	S3.2
<i>Meligethes erichsonii</i>		Nationally Notable	S3.2
<i>Meligethes lugubris</i>		Nationally Notable	S3.2
<i>Meligethes ochropus</i>		Nationally Notable	S3.2
<i>Meligethes solidus</i>		Nationally Notable	S3.2
<i>Meloe rugosus</i>	Rugged Oil-beetle	UK Priority Species, IUCN Red List Rare	S3.1
<i>Meloe violaceus</i>	Violet Oil-beetle	UK Priority Species, Nationally Notable B	S3.2
<i>Mesosa nebulosa</i>		IUCN Red List Rare	S3.1
<i>Microplontus campestris</i>		Nationally Notable B	S3.2
<i>Microptilium pulchellum</i>		IUCN (pre 1994) – Insufficiently known	S3.2

<i>Microrhagus pygmaeus</i>		IUCN Red List Rare	S3.1
<i>Millidium minutissimum</i>		Nationally Notable	S3.2
<i>Mniophila muscorum</i>	Moss Flea Beetle	Nationally Notable B	S3.2
<i>Mogulones euphorbiae</i>		Nationally Notable A	S3.1
<i>Mogulones geographicus</i>		Nationally Notable B	S3.2
<i>Monotoma angusticollis</i>		IUCN Red List Rare	S3.1
<i>Mordella holomelaena</i>		IUCN (pre 1994) – Insufficiently known	S3.2
<i>Mordellistena humeralis</i>		IUCN (pre 1994) – Insufficiently known	S3.2
<i>Mordellistena neuwaldeggiana</i>		IUCN (pre 1994) – Insufficiently known	S3.2
<i>Mycetophagus piceus</i>		Nationally Notable B	S3.2
<i>Mycetophagus populi</i>		Nationally Notable A	S3.1
<i>Mycetophagus quadriguttatus</i>		Nationally Notable A	S3.1
<i>Myllaena elongata</i>		Nationally Notable	S3.2
<i>Nebrioporus depressus</i>		Nationally Notable B	S3.2
<i>Negastrius sabulicola</i>		IUCN Red List Vulnerable	S3.1
<i>Neliocarus faber</i>		Nationally Notable B	S3.2
<i>Neobisnius procerulus</i>		IUCN (pre 1994) – Insufficiently known	S3.2
<i>Neobisnius prolixus</i>		IUCN (pre 1994) – Insufficiently known	S3.2
<i>Neocoenorrhinus interpunctatus</i>		Nationally Notable B	S3.2
<i>Nicrophorus interruptus</i>		Nationally Notable B	S3.2
<i>Normandia nitens</i>		IUCN Red List Vulnerable	S3.1
<i>Notaris scirpi</i>		Nationally Notable B	S3.2
<i>Noterus crassicornis</i>	Smaller Noterus	Nationally Notable B	S3.2
<i>Ochrosis ventralis</i>		IUCN Red List Rare	S3.1
<i>Ochthebius bicolon</i>		Nationally Notable B	S3.2
<i>Ochthebius marinus</i>		Nationally Notable B	S3.2
<i>Ocypus fuscatus</i>		Nationally Notable B	S3.2

<i>Odonteus armiger</i>		Nationally Notable A	S3.1
<i>Oedemera virescens</i>		IUCN Red List Vulnerable	S3.1
<i>Oedemera femoralis</i>		Nationally Notable B	S3.2
<i>Oedostethus quadripustulatus</i>		Nationally Notable A	S3.1
<i>Oligota flavicornis</i>		Nationally Notable	S3.2
<i>Omalopecta ruricola</i>		Nationally Notable B	S3.2
<i>Omiomima mollina</i>		Nationally Notable A	S3.1
<i>Onthophagus vacca</i>		Nationally Notable B	S3.2
<i>Oodes helopioides</i>		Nationally Notable B	S3.2
<i>Ophonus cordatus</i>	Ground beetle	IUCN Red List Rare	S3.2
<i>Ophonus melletii</i>	Mellet's Downy-back	UK Priority Species, Nationally Notable A	S3.1
<i>Ophonus puncticollis</i>	a downy-back ground beetle	UK Priority Species, IUCN Red List Rare	S3.1
<i>Ophonus schaubergerianus</i>		Nationally Notable B	S3.2
<i>Ophonus (ardosiacus)</i>		Nationally Notable B	S3.2
<i>Ophonus azureus</i>		Nationally Notable B	S3.2
<i>Ophonus stictus</i>	Oolite Downy-back	UK Priority Species, IUCN Red List Endangered	S3.1
<i>Opilo mollis</i>		Nationally Notable B	S3.2
<i>Orchesia micans</i>		Nationally Notable B	S3.2
<i>Orchesia minor</i>		Nationally Notable B	S3.2
<i>Oreodytes davisii</i>		Nationally Notable B	S3.2
<i>Orsodacne humeralis</i>		Nationally Notable B	S3.2
<i>Orthochaetes setiger</i>		Nationally Notable B	S3.2
<i>Orthoperus nigrescens</i>		Nationally Notable B	S3.2
<i>Osphya bipunctata</i>		IUCN Red List Rare	S3.1
<i>Oulimnius major</i>		Nationally Notable A	S3.1
<i>Oulimnius troglodytes</i>		Nationally Notable B	S3.2
<i>Oxypoda recondita</i>		Nationally Notable	S3.2
<i>Oxypoda soror</i>		Nationally Notable	S3.2
<i>Oxypoda spectabilis</i>		Nationally Notable	S3.2
<i>Paederus fuscipes</i>		Nationally Notable B	S3.2
<i>Panagaeus bipustulatus</i>		Nationally Notable B	S3.2
<i>Panagaeus cruxmajor</i>	Crucifix ground beetle	UK Priority Species, IUCN Red	S3.1

		List Endangered	
<i>Paraphotistus nigricornis</i>		IUCN Red List Rare	S3.1
<i>Peltodytes caesus</i>		Nationally Notable B	S3.2
<i>Phaedon concinnus</i>		Nationally Notable B	S3.2
<i>Phalacrus brunnipes</i>		Nationally Notable A	S3.1
<i>Philhygra hygrobia</i>		Nationally Notable	S3.2
<i>Philhygra parca</i>		IUCN – Insufficiently known	S3.2
<i>Philhygra terminalis</i>		IUCN – Insufficiently known	S3.2
<i>Philorhizus quadrisignatus</i>	Mab's Lantern	UK Priority Species, IUCN Red List Endangered	S3.1
<i>Phloeophagus gracilis</i>		Extinct	S3.1
<i>Phloiophilus edwardsii</i>		Nationally Notable B	S3.2
<i>Phloiotrya vaudoueri</i>		Nationally Notable B	S3.2
<i>Phyllodrepa puberula</i>		Nationally Notable A	S3.1
<i>Phyllotreta cruciferae</i>	Turnip Fly	Nationally Notable B	S3.2
<i>Phyllotreta punctulata</i>		Nationally Notable B	S3.2
<i>Phyllotreta vittula</i>	Barley Flea Beetle	Nationally Notable A	S3.1
<i>Phytobius leucogaster</i>		Nationally Notable B	S3.2
<i>Phytoecia cylindrica</i>		Nationally Notable B	S3.2
<i>Pilemostoma fastuosa</i>		Nationally Notable A	S3.1
<i>Platycis cosnardi</i>	Cosnard's Net-winged Beetle	UK Priority Species, IUCN Red List Indeterminate	S3.1
<i>Platycis minutus</i>		Nationally Notable B	S3.2
<i>Platyderus depressus</i>		Nationally Notable B	S3.2
<i>Platydracus fulvipes</i>		Nationally Notable B	S3.2
<i>Platydracus latebricola</i>		Nationally Notable B	S3.2
<i>Platypus cylindrus</i>	Oak Pin-Hole Borer	Nationally Notable B	S3.2
<i>Platyrhinus resinosus</i>	Cramp-Ball Fungus Weevil	Nationally Notable B	S3.2
<i>Plegaderus dissectus</i>		Nationally Notable B	S3.2
<i>Podagrica fuscicornis</i>	Mallow Flea Beetle	Nationally Notable B	S3.2
<i>Podagrica fuscipes</i>	Mallow Flea Beetle	Nationally Notable A	S3.1
<i>Poecilium alni</i>		Nationally Notable B	S3.2
<i>Pogonus littoralis</i>		Nationally Notable B	S3.2
<i>Pogonus luridipennis</i>	Yellow Pogonus	UK Priority Species, IUCN Red List Rare	S3.1
<i>Polydrusus mollis</i>		Nationally Notable B	S3.2

<i>Polydrusus flavipes</i>		Nationally Notable B	S3.2
<i>Polydrusus pulchellus</i>	Sea-Wormwood Weevil	Nationally Notable B	S3.2
<i>Pomatinus substriatus</i>		Nationally Notable A	S3.1
<i>Porcinolus murinus</i>		Nationally Notable B	S3.2
<i>Prionocyphon serricornis</i>		Nationally Notable B	S3.2
<i>Prionus coriarius</i>	Tanner Beetle	Nationally Notable A	S3.1
<i>Prionychus ater</i>		Nationally Notable B	S3.2
<i>Prionychus melanarius</i>		IUCN Red List Vulnerable	S3.1
<i>Procaerus tibialis</i>		IUCN Red List Rare	S3.1
<i>Protapion difforme</i>		Nationally Notable B	S3.2
<i>Protapion dissimile</i>		Nationally Notable B	S3.2
<i>Protapion filirostre</i>		Nationally Notable B	S3.2
<i>Protapion varipes</i>		Nationally Notable B	S3.2
<i>Pseudocistela ceramboides</i>		Nationally Notable B	S3.2
<i>Pseudomedon obsoletus</i>		IUCN (pre 1994) – Indeterminate	S3.2
<i>Pseudoprotapion astragali</i>		Nationally Notable A	S3.1
<i>Psylliodes attenuata</i>	Hop Flea Beetle	IUCN Red List Endangered	S3.1
<i>Psylliodes chalcomera</i>		Nationally Notable B	S3.2
<i>Psylliodes luteola</i>		IUCN (pre 1994) – Insufficiently known	S3.2
<i>Pterostichus oblongopunctatus</i>		Nationally Notable B	S3.2
<i>Pterostichus quadrioveolatus</i>		Nationally Notable B	S3.2
<i>Pterostichus longicollis</i>		Nationally Notable B	S3.2
<i>Pterostichus anthracinus</i>		Nationally Notable B	S3.2
<i>Pterostichus gracilis</i>		Nationally Notable B	S3.2
<i>Ptinella denticollis</i>		Nationally Notable	S3.2
<i>Ptinella limbata</i>		IUCN (pre 1994) – Insufficiently known	S3.2
<i>Ptinus lichenum</i>		IUCN Red List Rare	S3.1
<i>Ptinus subpilosus</i>		Nationally Notable B	S3.2
<i>Pyrochroa coccinea</i>	Black-Headed Cardinal	Nationally Notable B	S3.2

	Beetle		
<i>Pyrrhidium sanguineum</i>	Longhorn Beetle	IUCN Red List Vulnerable	S3.1
<i>Quedius fulgidus</i>		Nationally Notable B	S3.2
<i>Quedius microps</i>		Nationally Notable B	S3.2
<i>Quedius scitus</i>		Nationally Notable B	S3.2
<i>Quedius truncicola</i>		Nationally Notable B	S3.2
<i>Rabocerus foveolatus</i>		Nationally Notable A	S3.1
<i>Rabocerus gabrieli</i>		Nationally Notable B	S3.2
<i>Rhagonycha lutea</i>		Nationally Notable B	S3.2
<i>Rhagonycha translucida</i>		Nationally Notable B	S3.2
<i>Rhantus suturalis</i>		Nationally Notable B	S3.2
<i>Rhinocyllus conicus</i>		Nationally Notable A	S3.1
<i>Rhizophagus nitidulus</i>		Nationally Notable B	S3.2
<i>Rhizophagus oblongicollis</i>		IUCN Red List Endangered	S3.1
<i>Rhizophagus picipes</i>		Nationally Notable A	S3.1
<i>Riolus cupreus</i>		Nationally Notable B	S3.2
<i>Riolus subviolaceus</i>		Nationally Notable B	S3.2
<i>Rugilus similis</i>		Nationally Notable	S3.2
<i>Saperda carcharias</i>	Willow Borer	Nationally Notable A	S3.1
<i>Scaphidema metallicum</i>		Nationally Notable B	S3.2
<i>Scaphisoma boleti</i>		Nationally Notable B	S3.2
<i>Scarodytes halensis</i>		Nationally Notable B	S3.2
			S3.2
<i>Scolytus mali</i>	Large Fruit Bark Beetle	Nationally Notable B	S3.2
<i>Scymnus limbatus</i>		Nationally Notable B	S3.2
<i>Scymnus schmidti</i>		Nationally Notable B	S3.2
<i>Sepedophilus bipunctatus</i>		Nationally Notable B	S3.2
<i>Sepedophilus pedicularius</i>		Nationally Notable	S3.2
<i>Sepedophilus testaceus</i>		Nationally Notable	S3.2
<i>Silpha obscura</i>		IUCN Red List Vulnerable	S3.1
<i>Silusa rubiginosa</i>		Nationally Notable	S3.2
<i>Sitaris muralis</i>		IUCN Red List Endangered	S3.1

<i>Sitona macularius</i>		Nationally Notable B	S3.2
<i>Smaragdina affinis</i>		IUCN Red List Endangered	S3.1
<i>Smicronyx reichi</i>		IUCN Red List Rare	S3.1
<i>Squamapion cineraceum</i>		Nationally Notable A	S3.1
<i>Stenocarus ruficornis</i>		Nationally Notable B	S3.2
<i>Stenolophus teutonius</i>		Nationally Notable B	S3.2
<i>Stenostola dubia</i>	Lime Beetle	Nationally Notable B	S3.2
<i>Stenus fornicatus</i>		Nationally Notable B	S3.2
<i>Stenus niveus</i>		Nationally Notable B	S3.2
<i>Stenus argus</i>		Nationally Notable B	S3.2
<i>Stenus ater</i>		Nationally Notable B	S3.2
<i>Stenus carbonarius</i>		Nationally Notable B	S3.2
<i>Stenus morio</i>		IUCN – Insufficiently known	S3.2
<i>Stenus nigritulus</i>		Nationally Notable B	S3.2
<i>Stereocorynes truncorum</i>		Nationally Notable A	S3.1
<i>Stictoleptura scutellata</i>		Nationally Notable A	S3.1
<i>Stictonectes lepidus</i>		Nationally Notable B	S3.2
<i>Symbiotes latus</i>		Nationally Notable B	S3.2
<i>Tachyporus formosus</i>		Nationally Notable A	S3.1
<i>Tachys bistriatus</i>		Nationally Notable B	S3.2
<i>Tanymecus palliatus</i>		Nationally Notable B	S3.2
<i>Taphrorhynchus bicolor</i>		Nationally Notable A	S3.1
<i>Tarsostenus univittatus</i>		Extinct	S3.1
<i>Temnocerus tomentosus</i>		Nationally Notable B	S3.2
<i>Tetratoma desmarestii</i>		Nationally Notable A	S3.1
<i>Thamiaraea hospita</i>		Nationally Notable	S3.2
<i>Thamiocolus viduatus</i>		Nationally Notable B	S3.2
<i>Thryogenes scirrhosus</i>		Nationally Notable B	S3.2
<i>Thymalus limbatus</i>		Nationally Notable B	S3.2
<i>Tillus elongatus</i>		Nationally Notable B	S3.2
<i>Tournotaris bimaculatus</i>		Nationally Notable B	S3.2
<i>Trachodes hispidus</i>		Nationally Notable B	S3.2
<i>Trachyphloeus alternans</i>		Nationally Notable B	S3.2

<i>Trachyploeus asperatus</i>		Nationally Notable A	S3.1
<i>Trachys scrobiculatus</i>	Ground-Ivy Jewel Beetle	Nationally Notable A	S3.1
<i>Trechus rubens</i>		Nationally Notable B	S3.2
<i>Trichonyx sulcicollis</i>		IUCN Red List Vulnerable	S3.1
<i>Trichosirocalus horridus</i>		Nationally Notable A	S3.1
<i>Trinodes hirtus</i>		IUCN Red List Rare	S3.1
<i>Tritoma bipustulata</i>		Nationally Notable A	S3.1
<i>Trypodendron signatum</i>		Nationally Notable B	S3.2
<i>Tychius lineatulus</i>		Nationally Notable A	S3.1
<i>Uleiota planata</i>		Nationally Notable A	S3.1
<i>Variimorda villosa</i>		Nationally Notable B	S3.2
<i>Xyletinus longitarsis</i>		IUCN Red List Vulnerable	S3.1
<i>Zabrus tenebrioides</i>		Nationally Notable A	S3.1

<i>Lepidoptera</i>	Butterflies and moths	<i>JNCC checklist: 2014-08-22</i>	
	Butterflies		
<i>Argynnis adippe</i>	High Brown Fritillary	UK Priority Species (NERC Act, S41), W&C Act Schedule 5, IUCN Red List Critically Endangered; likely extinct in the county	S3.1
<i>Argynnis aglaja</i>	Dark Green Fritillary	Uncommon in Gloucestershire	S3.6
<i>Argynnis paphia</i>	Silver-washed Fritillary	Uncommon in Gloucestershire	S3.6
<i>Aricia agestis</i>	Brown Argus	Uncommon in Gloucestershire	S3.6
<i>Boloria euphrosyne</i>	Pearl-bordered Fritillary	UK Priority Species (NERC Act S41), W&C Act Schedule 5, IUCN Red List Endangered, 25 or fewer breeding sites in the county	S3.1
<i>Boloria selene</i>	Small Pearl-bordered Fritillary	UK Priority Species (NERC Act S41), IUCN Red List Near Threatened, 25 or fewer breeding sites in the county	S3.1
<i>Coenonympha pamphilus</i>	Small Heath	UK Priority Species (NERC Act S41), IUCN Red List Near Threatened	S3.2
<i>Cupido minimus</i>	Small Blue	UK Priority Species (NERC Act S41), W&C Act Schedule 5, IUCN Red List Near Threatened, 5% or more of their national 10km square distribution in the county.	S3.1, S3.5
<i>Erynnis tages</i>	Dingy Skipper	UK Priority Species (NERC Act S41), IUCN Red List Vulnerable	S3.2
<i>Euphydryas aurinia</i>	Marsh Fritillary	UK Priority Species (NERC Act S41), W&C Act Schedule 5, IUCN Red List Vulnerable, Bern Convention Appendix 2, Habitats Directive Annex 2; 25 or fewer breeding sites in the county	S3.1
<i>Hamearis lucina</i>	Duke of Burgundy	UK Priority Species (NERC Act S41), W&C Act Schedule 5, IUCN Red List Endangered, 5% or more of their national 10km square distribution in the county.	S3.1, S3.5
<i>Hipparchia semele</i>	Grayling	UK Priority Species (NERC Act S41), IUCN Red List Vulnerable,	S3.1

		extinct in the county?	
<i>Lasiommata megera</i>	Wall	UK Priority Species (NERC Act S41), IUCN Red List Near Threatened	S3.2
<i>Leptidea sinapis</i>	Wood White	UK Priority Species (NERC Act S41), W&C Act Schedule 5, IUCN Red List Endangered, 25 or fewer breeding sites in the county	S3.1
<i>Limenitis camilla</i>	White Admiral	UK Priority Species (NERC Act S41), IUCN Red List Vulnerable, Uncommon in Gloucestershire	S3.1, S3.6
<i>Phengaris arion</i>	Large Blue	The Conservation of Habitats and Species Regulations 2010 Schedule 2, UK Priority Species (NERC Act S41), W&C Act Schedule 5, IUCN Red List Critically Endangered, Bern Convention Appendix 2, Habitats Directive Annex 4; 25 or fewer breeding sites in the county	S3.1
<i>Polyommatus bellargus</i>	Adonis Blue	W&C Act Schedule 5, IUCN Red List Near Threatened, 25 or fewer breeding sites in the county	S3.1
<i>Polyommatus coridon</i>	Chalk-hill Blue	W&C Act Schedule 5, IUCN Red List Near Threatened, 5% or more of their national 10km square distribution in the county.	S3.5
<i>Pyrgus malvae</i>	Grizzled Skipper	UK Priority Species (NERC Act S41), IUCN Red List Vulnerable, Uncommon in Gloucestershire	S3.1, S3.6
<i>Satyrrium w-album</i>	White letter hairstreak	UK Priority Species (NERC Act S41), W&C Act Schedule 5, IUCN Red List Endangered, 5% or more of their national 10km square distribution in the county, Uncommon in Gloucestershire.	S3.1; H12.7

	Moths (macro)	<i>JNCC checklist: 2014-08-22</i> <i>GM amendments 2015-08-21</i>	
<i>Adscita globulariae</i>	Scarce Forester	IUCN Red List: Rare (pre-1994)	S3.1
<i>Adscita statures</i>	The Forester	UK Priority Species (NERC Act S.41)	S3.2
<i>Aleucis distinctata</i>	Sloe Carpet	UK Priority Species (NERC Act S.41)	S3.2
<i>Aplasta ononaria</i>	Rest Harrow	IUCN GB Red List: Rare (pre-1994); UK Priority Species (NERC Act S.41)	S3.1
<i>Aspitates gilvaria</i>	Straw Belle	UK Priority Species (NERC Act S.41)	S3.2
<i>Catocala promissa</i>	Light Crimson Underwing	IUCN GB Red List: Rare (pre-1994); UK Priority Species (NERC Act S.41)	S3.1
<i>Catocala sponsa</i>	Dark Crimson Underwing	IUCN GB Red List: Rare (pre-1994); UK Priority Species (NERC Act S.41)	S3.1
<i>Coscinia cribraria subsp. bivittata [sp. if no subsp.]</i>	Speckled Footman	UK Priority Species (NERC Act S41); IUCN Red List: Vulnerable	S3.1
<i>Cosmia diffinis</i>	White-spotted Pinion	UK Priority Species (NERC Act S41)	S3.2
<i>Cossus cossus</i>	Goat Moth	UK Priority Species (NERC Act S41)	S3.2
<i>Cyclophora pendularia</i>	Dingy Mocha	IUCN GB Red List: Rare (pre-1994); UK Priority Species (NERC Act S.41)	S3.1
<i>Cyclophora porata</i>	False Mocha	UK Priority Species (NERC Act S41)	S3.2
<i>Dicycla oo</i>	Heart Moth	UK Priority Species (NERC Act S41)	S3.2
<i>Eilema pygmaeola</i>	Pygmy Footman	IUCN GB Red List: Rare (pre-1994)	S3.1
<i>Epione vespertaria</i>	Dark Bordered Beauty	IUCN GB Red List: Rare (pre-1994); UK Priority Species (NERC Act S.41)	S3.1
<i>Eriogaster lanestris</i>	Small Eggar	IUCN Red List: Vulnerable (pre-1994, likely to be updated to Endangered)	S3.1
<i>Eupithecia egenaria</i>	Pauper Pug (Fletcher's Pug)	IUCN GB Red List: Rare (pre-1994)	S3.1
<i>Heliophobus reticulata</i>	Bordered Gothic	UK Priority Species (NERC Act S41)	S3.2

<i>Hemaris tityus</i>	Narrow-bordered Bee Hawk-moth	UK Priority Species (NERC Act S41)	S3.2
<i>Idea dilutaria</i>	Silky Wave	IUCN GB Red List: Rare (pre-1994); UK Priority Species (NERC Act S41)	S3.1
<i>Jodia croceago</i>	Orange Upperwing	IUCN GB Red List: Rare (pre-1994); UK Priority Species (NERC Act S41)	S3.1
<i>Minoa murinata</i>	Drab looper	UK Priority Species (NERC Act S41)	S3.2
<i>Noctua orbona</i>	Lunar Yellow Underwing	UK Priority Species (NERC Act S41)	S3.2
<i>Orgyia recens</i>	Scarce Vapourer	IUCN GB Red List: Vulnerable (pre-1994); UK Priority Species (NERC Act S41)	S3.1
<i>Oria musculosa</i>	Brighton Wainscot	UK Priority Species (NERC Act S41)	S3.2
<i>Paracolax tristalis</i>	Clay Fan-foot	UK Priority Species (NERC Act S41)	S3.2
<i>Pareulype berberata</i>	Barberry Carpet	IUCN GB Red List: Vulnerable (pre-1994); UK Priority Species (NERC Act S41); W&C Act Schedule 5	S3.1
<i>Pechipogo strigilata</i>	Common Fanfoot	UK Priority Species (NERC Act S41)	S3.2
<i>Polia bombycina</i>	Pale Shining Brown	UK Priority Species (NERC Act S41)	S3.2
<i>Rheumaptera hastata</i>	Argent and Sable	UK Priority Species (NERC Act S41)	S3.2
<i>Sabra harpagula</i>	Scarce Hook-Tip	IUCN Red List: Rare (pre-1994) Gloucestershire is a stronghold	S3.1
<i>Scotopteryx bipunctaria</i>	Chalk Carpet	UK Priority Species (NERC Act S41)	S3.2
<i>Shargacucullia lychnitis</i>	Striped Lychnis	UK Priority Species (NERC Act S41)	S3.2
<i>Trichopteryx polycommata</i>	Barred Toothstriped	UK Priority Species (NERC Act S41)	S3.2
<i>Tyta luctuosa</i>	Four-Spotted Moth	UK Priority Species (NERC Act S41); IUCN Red List: Vulnerable (pre-1994)	S3.1
<i>Xylena exsoleta</i>	Sword-Grass	UK Priority Species (Scotland, Wales & NI but not England)	S3.2

Note that the latest JNCC checklist (2014–08–22) is not up to date for micro-moths. The Status columns below have a more recent source from to reflect:

Davis, A.M. (2012). [A Review of the Status of Microlepidoptera in Britain](#). Butterfly Conservation, Wareham. (Butterfly Conservation Report No. S12–02)

Definition of ‘rare’, ‘scarce’ or Red Data Book National Status

- RDB 1 – species appear in the Red Data Book and are categorised as endangered;
- RDB 2 – species appear in the Red Data Book and are categorised as vulnerable;
- RDB 3 – species appear in the Red Data Book and are categorised as rare;
- RDB K – species appear in the Red Data Book but the status is unknown, although they are thought to be rare;
- pRDB 1 – species are likely to appear in the Red Data Book and be categorised as endangered;
- pRDB 2 – species are likely to appear in the Red Data Book and be categorised as vulnerable;
- pRDB 3 – species are likely to appear in the Red Data Book and be categorised as rare;
- N – species are nationally notable and have been recorded in 16–100 ten kilometre squares in Great Britain.
- Na – species are nationally notable and have been recorded in 16 – 30 ten kilometre squares in Great Britain;
- Nb – species are nationally scarce and have been recorded in 31 – 100 ten kilometre squares in Great Britain

!Whole list included

	Moths (micro)	<i>Status source: see above, and: GM spreadsheet: 2015-01-09 Amended 2015-08-21</i>	
<i>Acanthopsyche atra</i>		pRDB3	S3.1
<i>Acleris abietana</i>		Nationally Notable A	S3.1
<i>Acleris lipsiana</i>		pRDB3	S3.1
<i>Acleris lorquiniana</i>		pRDB3	S3.1
<i>Acleris maccana</i>		Nationally Notable A	S3.1
<i>Acleris permutana</i>		pRDB2	S3.1
<i>Acleris rufana</i>		Nationally Notable A	S3.1
<i>Acleris shepherdana</i>		Nationally Notable B	S3.2
<i>Acleris umbrana</i>		Nationally Notable A	S3.1
<i>Acompsia schmidtellus</i>		Nationally Notable B	S3.2
<i>Acroclita subsequana</i>		pRDB1	S3.1
<i>Acrolepiopsis betulella</i>		pRDB2	S3.1
<i>Acrolepiopsis marcidella</i>		pRDB3	S3.1
<i>Adoxophyes orana</i>	Summer Fruit Tortrix	Nationally Notable B	S3.2
<i>Aethes dilucidana</i>		Nationally Notable B	S3.2
<i>Aethes hartmanniana</i>		Nationally Notable B	S3.2

<i>Aethes margaritana</i>		pRDB2	S3.1
<i>Aethes piercei</i>		Nationally Notable B	S3.2
<i>Aethes rutilana</i>		pRDB1	S3.1
<i>Aethes williana</i>		Nationally Notable B	S3.2
<i>Agdistis meridionalis</i>	Cliff Plume	Nationally Notable A	S3.1
<i>Aglossa caprealis</i>	Small Tabby	pRDB2	S3.1
<i>Agonopterix astrantiae</i>		pRDB2	S3.1
<i>Agonopterix atomella</i>		UK Priority Species (NERC Act S41); Nationally Notable A	S3.1
<i>Agonopterix bipunctosa</i>		Nationally Notable A	S3.1
<i>Agonopterix capreolella</i>		UK Priority Species pRDB1	S3.1
<i>Agonopterix carduella</i>		Nationally Notable B	S3.2
<i>Agonopterix cnicella</i>		Nationally Notable A	S3.1
<i>Agonopterix curvipunctosa</i>		pRDB3	S3.1
<i>Agonopterix kuznetzovi</i>		pRDB1	S3.1
<i>Agonopterix nanatella</i>		Nationally Notable B	S3.2
<i>Agonopterix pallorella</i>		Nationally Notable B	S3.2
<i>Agonopterix putridella</i>		pRDB2	S3.1
<i>Agonopterix rotundella</i>		Nationally Notable A	S3.1
<i>Agrotera nemoralis</i>		UK Priority Species pRDB1	S3.1
<i>Altenia scriptella</i>		Nationally Notable A	S3.1
<i>Amphisbatis incongruella</i>		Nationally Notable A	S3.1
<i>Anacamptis temerella</i>		pRDB2	S3.1
<i>Anania funebris</i>		UK Priority Species (NERC Act S41); Nationally Notable B	S3.2
<i>Anania stachydalis</i>		Nationally Notable B	S3.2
<i>Anania terrealis</i>		Nationally Notable A	S3.1
<i>Anania verbascalis</i>		Nationally Notable B	S3.2
<i>Anarsia lineatella</i>	Peach Twig Borer	Nationally Notable A	S3.1
<i>Ancylis apicella</i>		Nationally Notable B	S3.2
<i>Ancylis obtusana</i>		Nationally Notable B	S3.2
<i>Ancylis paludana</i>		pRDB1	S3.1
<i>Ancylis subarcuana</i>		Nationally Notable A	S3.1
<i>Ancylis tineana</i>		pRDB2	S3.1
<i>Ancylis unculana</i>		Nationally Notable B	S3.2
<i>Ancylis upupana</i>		Nationally Notable B	S3.2
<i>Ancylois oblitella</i>		Nationally Notable B	S3.2
<i>Anerastia lotella</i>		Nationally Notable B	S3.2
<i>Aphelia unitana</i>		Nationally Notable A	S3.1
<i>Aphomia zelleri</i>		Nationally Notable A	S3.1
<i>Aplota palpellus</i>		UK Priority Species pRDB2	S3.1

<i>Apomyelois bistratella</i>		Nationally Notable B	S3.2
<i>Apotomis infida</i>		pRDB1	S3.1
<i>Apotomis lineana</i>		Nationally Notable B	S3.2
<i>Apotomis semifasciana</i>		Nationally Notable B	S3.2
<i>Apotomis sororculana</i>		Nationally Notable B	S3.2
<i>Archinemapogon yildizae</i>		pRDB1	S3.1
<i>Archips oporana</i>		Nationally Notable A	S3.1
<i>Argolamprotes micella</i>		Nationally Notable B	S3.2
<i>Argyresthia abdominalis</i>		pRDB2	S3.1
<i>Argyresthia arceuthina</i>		Nationally Notable B	S3.2
<i>Argyresthia aurulentella</i>		pRDB3	S3.1
<i>Argyresthia dilectella</i>		Nationally Notable B	S3.2
<i>Argyresthia glabratella</i>		Nationally Notable B	S3.2
<i>Argyresthia ivella</i>		Nationally Notable B	S3.2
<i>Argyresthia praecocella</i>		pRDB3	S3.1
<i>Argyroploce arbutella</i>		Nationally Notable A	S3.1
<i>Aristotelia brizella</i>		Nationally Notable B	S3.2
<i>Assara terebrella</i>		Nationally Notable A	S3.1
<i>Atemelia torquatella</i>		Nationally Notable A	S3.1
<i>Athrips rancidella</i>	Cotoneaster Webworm	pRDB2	S3.1
<i>Athrips tetrapunctella</i>		pRDB2	S3.1
<i>Bacotia claustrella</i>		pRDB3	S3.1
<i>Bactra lacteana</i>		Nationally Notable B	S3.2
<i>Bactra robustana</i>		Nationally Notable B	S3.2
<i>Bankesia conspurcatella</i>		pRDB1	S3.1
<i>Batia internella</i>		pRDB1	S3.1
<i>Batrachedra pinicolella</i>		Nationally Notable B	S3.2
<i>Bisigna procerella</i>		pRDB2	S3.1
<i>Blastodacna atra</i>	Apple Pith Moth	Nationally Notable B	S3.2
<i>Bohemannia auriciliella</i>		pRDB1	S3.1
<i>Bohemannia quadrimaculella</i>		Nationally Notable B	S3.2
<i>Borkhausenia minutella</i>		pRDB1	S3.1
<i>Brachmia inornatella</i>		Nationally Notable A	S3.1
<i>Bryotropha basaltinella</i>		Nationally Notable A	S3.1
<i>Bryotropha boreella</i>		Nationally Notable B	S3.2
<i>Bryotropha desertella</i>		Nationally Notable B	S3.2
<i>Bryotropha dryadella</i>		pRDB2	S3.1
<i>Bryotropha galbanella</i>		Nationally Notable A	S3.1
<i>Bryotropha umbrosella</i>		Nationally Notable B	S3.2
<i>Bucculatrix cristatella</i>		Nationally Notable B	S3.2
<i>Bucculatrix humiliella</i>		pRDB3	S3.1

<i>Bucculatrix maritima</i>		Nationally Notable B	S3.2
<i>Buckleria paludum</i>	Sundew Plume	Nationally Notable A	S3.1
<i>Callisto coffeella</i>		pRDB1	S3.1
<i>Caloptilia cuculipennella</i>		Nationally Notable A	S3.1
<i>Caloptilia falconipennella</i>		Nationally Notable B	S3.2
<i>Caloptilia hemidactylella</i>		pRDB1	S3.1
<i>Capperia britanniodactylus</i>	Wood Sage Plume	Nationally Notable B	S3.2
<i>Carpatolechia decorella</i>		Nationally Notable B	S3.2
<i>Caryocolum alsinella</i>		Nationally Notable A	S3.1
<i>Caryocolum blandella</i>		Nationally Notable B	S3.2
<i>Caryocolum blandelloides</i>		pRDB1	S3.1
<i>Caryocolum blandulella</i>		pRDB1	S3.1
<i>Caryocolum junctella</i>		pRDB3	S3.1
<i>Caryocolum kroesmanniella</i>		pRDB1	S3.1
<i>Caryocolum marmorea</i>		Nationally Notable B	S3.2
<i>Caryocolum proxima</i>		pRDB3	S3.1
<i>Caryocolum vicinella</i>		Nationally Notable A	S3.1
<i>Caryocolum viscariella</i>		Nationally Notable B	S3.2
<i>Catoptria furcatellus</i>		Nationally Notable A	S3.1
<i>Catoptria permutatellus</i>		Nationally Notable A	S3.1
<i>Celypha aurofasciana</i>		Nationally Notable A	S3.1
<i>Celypha rufana</i>		pRDB3	S3.1
<i>Celypha rurestrana</i>		pRDB1	S3.1
<i>Celypha woodiana</i>		UK Priority Species (NERC Act S41); Nationally Notable A	S3.1
<i>Chionodes distinctella</i>		Nationally Notable A	S3.1
<i>Chionodes fumatella</i>		Nationally Notable B	S3.2
<i>Choreutis diana</i>		pRDB1	S3.1
<i>Choristoneura diversana</i>		Nationally Notable A	S3.1
<i>Chrysoclista lathamella</i>		pRDB2	S3.1
<i>Chrysoclista linneella</i>		Nationally Notable B	S3.2
<i>Clavigesta sylvestrana</i>		Nationally Notable A	S3.1
<i>Clepsis rurinana</i>		pRDB1	S3.1
<i>Cnaemidophorus rhododactyla</i>	Rose Plume	Nationally Notable A	S3.1
<i>Cnephasia conspersana</i>		Nationally Notable B	S3.2
<i>Cochylidia heydeniana</i>		Nationally Notable A	S3.1
<i>Cochylidia subroseana</i>		pRDB2	S3.1
<i>Cochylimorpha alternana</i>		pRDB3	S3.1
<i>Cochylis flaviciliana</i>		Nationally Notable B	S3.2
<i>Cochylis pallidana</i>		Nationally Notable A	S3.1

<i>Coleophora adjectella</i>		pRDB2	S3.1
<i>Coleophora adjunctella</i>		Nationally Notable B	S3.2
<i>Coleophora adpersella</i>		Nationally Notable B	S3.2
<i>Coleophora aestuariella</i>		pRDB2	S3.1
<i>Coleophora ahenella</i>		Nationally Notable A	S3.1
<i>Coleophora albella</i>		pRDB1	S3.1
<i>Coleophora albicans</i>		Nationally Notable A	S3.1
<i>Coleophora alnifoliae</i>		Nationally Notable B	S3.2
<i>Coleophora amethystinella</i>		pRDB2	S3.1
<i>Coleophora arctostaphyli</i>		pRDB1	S3.1
<i>Coleophora asteris</i>		Nationally Notable A	S3.1
<i>Coleophora atriplicis</i>		Nationally Notable B	S3.2
<i>Coleophora calycotomella</i>		pRDB1	S3.1
<i>Coleophora chalcogrammella</i>		pRDB1	S3.1
<i>Coleophora clypeiferella</i>		Nationally Notable A	S3.1
<i>Coleophora conspicuella</i>		pRDB2	S3.1
<i>Coleophora conyzae</i>		Nationally Notable B	S3.2
<i>Coleophora currucipennella</i>		pRDB3	S3.1
<i>Coleophora deviella</i>		pRDB3	S3.1
<i>Coleophora frischella</i>	Clover Case-bearer	Nationally Notable B	S3.2
<i>Coleophora fuscocuprella</i>		Nationally Notable B	S3.2
<i>Coleophora galbulipennella</i>		pRDB1	S3.2
<i>Coleophora gardesanella</i>		Nationally Notable A	S3.1
<i>Coleophora genistae</i>		Nationally Notable A	S3.1
<i>Coleophora glitzella</i>		Nationally Notable A	S3.1
<i>Coleophora hydrolapathella</i>		UK Priority Species pRDB1	S3.1
<i>Coleophora idaeella</i>		pRDB2	S3.1
<i>Coleophora inulae</i>		Nationally Notable A	S3.1
<i>Coleophora lassella</i>		Nationally Notable B	S3.2
<i>Coleophora limoniella</i>		Nationally Notable B	S3.2
<i>Coleophora linosyridella</i>		pRDB1	S3.1
<i>Coleophora lithargyrinella</i>		Nationally Notable B	S3.2
<i>Coleophora lixella</i>		Nationally Notable B	S3.2
<i>Coleophora lutarea</i>		Nationally Notable B	S3.2
<i>Coleophora maritimella</i>		Nationally Notable B	S3.2
<i>Coleophora niveicostella</i>		pRDB3	S3.1
<i>Coleophora nutantella</i>		Nationally Notable A	S3.1

<i>Coleophora ochrea</i>		pRDB2	S3.1
<i>Coleophora orbitella</i>		Nationally Notable B	S3.2
<i>Coleophora pappiferella</i>		pRDB1	S3.1
<i>Coleophora pennella</i>		Nationally Notable A	S3.1
<i>Coleophora prunifoliae</i>		Nationally Notable B	S3.2
<i>Coleophora ramosella</i>		pRDB1	S3.1
<i>Coleophora salicorniae</i>		Nationally Notable B	S3.2
<i>Coleophora salinella</i>		Nationally Notable A	S3.1
<i>Coleophora saturatella</i>		pRDB3	S3.1
<i>Coleophora serpylletorum</i>		pRDB1	S3.1
<i>Coleophora siccifolia</i>		Nationally Notable B	S3.2
<i>Coleophora solitariella</i>		Nationally Notable B	S3.2
<i>Coleophora squamosella</i>		pRDB2	S3.1
<i>Coleophora sternipennella</i>		Nationally Notable B	S3.2
<i>Coleophora sylvaticella</i>		Nationally Notable B	S3.2
<i>Coleophora therinella</i>		Nationally Notable B	S3.2
<i>Coleophora tricolor</i>		UK Priority Species pRDB2	S3.1
<i>Coleophora trigeminella</i>		Nationally Notable A	S3.1
<i>Coleophora trochilella</i>		Nationally Notable B	S3.2
<i>Coleophora vestianella</i>		Nationally Notable A	S3.1
<i>Coleophora vibicella</i>		UK Priority Species pRDB2	S3.1
<i>Coleophora vibicigerella</i>		pRDB1	S3.1
<i>Coleophora violacea</i>		Nationally Notable B	S3.2
<i>Coleophora virgaureae</i>		Nationally Notable B	S3.2
<i>Coleophora vitisella</i>		Nationally Notable A	S3.1
<i>Coleophora wockeella</i>		UK Priority Species pRDB1	S3.1
<i>Coleotechnites piceaella</i>		pRDB1	S3.1
<i>Commophila aeneana</i>		Nationally Notable B	S3.2
<i>Coptotriche angusticollella</i>		Nationally Notable B	S3.2
<i>Coptotriche heinemanni</i>		pRDB1	S3.1
<i>Cosmopterix lienigiella</i>		Nationally Notable B	S3.2
<i>Cosmopterix orichalcea</i>		Nationally Notable A	S3.1
<i>Cosmopterix scribaiella</i>		Nationally Notable A	S3.1
<i>Cosmopterix zieglerella</i>		Nationally Notable B	S3.2
<i>Crambus ericella</i>		Nationally Notable A	S3.1
<i>Crambus hamella</i>		Nationally Notable B	S3.2
<i>Crambus pratella</i>		Nationally Notable B	S3.2
<i>Crambus silvella</i>		pRDB3	S3.1
<i>Crambus uliginosellus</i>		Nationally Notable B	S3.2
<i>Crassa tinctella</i>		Nationally Notable B	S3.2
<i>Crombrugghia distans</i>	Breckland Plume	Nationally Notable B	S3.2
<i>Cydia cognatana</i>		pRDB2	S3.1

<i>Cydia conicolana</i>		Nationally Notable B	S3.2
<i>Cydia coniferana</i>		Nationally Notable B	S3.2
<i>Cydia corollana</i>		pRDB1	S3.1
<i>Cydia cosmophorana</i>		Nationally Notable B	S3.2
<i>Cydia illutana</i>		pRDB3	S3.1
<i>Cydia medicaginis</i>	Alfalfa Moth	pRDB2	S3.1
<i>Cydia microgrammana</i>		Nationally Notable B	S3.2
<i>Cydia millenniana</i>		pRDB1	S3.1
<i>Cydia pactolana</i>		pRDB1	S3.1
<i>Cydia servillana</i>		Nationally Notable B	S3.2
<i>Cydia strobilella</i>	Spruce Seed Moth	Nationally Notable B	S3.2
<i>Cynaeda dentalis</i>		Nationally Notable A	S3.1
<i>Dahlica inconspicuellla</i>	Lesser Lichen Case-bearer	Nationally Notable A	S3.1
<i>Dahlica lichenella</i>	Lichen Case-bearer	Nationally Notable A	S3.1
<i>Dahlica triquetrella</i>		pRDB2	S3.1
<i>Dasycera oliviella</i>		Nationally Notable A	S3.1
<i>Dasystema salicella</i>		Nationally Notable B	S3.2
<i>Denisia albimaculea</i>		pRDB3	S3.1
<i>Denisia similella</i>		Nationally Notable B	S3.2
<i>Denisia subaquilea</i>		Nationally Notable B	S3.2
<i>Depressaria albipunctella</i>		Nationally Notable A	S3.1
<i>Depressaria douglasella</i>		Nationally Notable B	S3.2
<i>Depressaria olerella</i>		pRDB1	S3.1
<i>Depressaria pimpinellae</i>		Nationally Notable A	S3.1
<i>Depressaria silesiaca</i>		pRDB2	S3.1
<i>Depressaria sordidatella</i>		Nationally Notable B	S3.2
<i>Dialectica imperialella</i>		pRDB1	S3.1
<i>Dichomeris alacella</i>		Nationally Notable B	S3.2
<i>Dichomeris juniperella</i>		pRDB1	S3.1
<i>Dichomeris ustalella</i>		pRDB1	S3.1
<i>Dichrorampha consortana</i>		Nationally Notable A	S3.1
<i>Dichrorampha flavidorsana</i>		Nationally Notable B	S3.2
<i>Dichrorampha sedatana</i>		Nationally Notable B	S3.2
<i>Dichrorampha senectana</i>		pRDB2	S3.1
<i>Dichrorampha sylvicolana</i>		pRDB3	S3.1
<i>Digitivalva perlepidella</i>		Nationally Notable A	S3.1
<i>Dioryctria schuetzeella</i>		Nationally Notable B	S3.2
<i>Dioryctria sylvestrella</i>		Nationally Notable B	S3.2
<i>Dolicharthria punctalis</i>		Nationally Notable B	S3.2

<i>Donacaula mucronella</i>		Nationally Notable B	S3.2
<i>Dryadaula pactolia</i>		pRDB1	S3.1
<i>Dystebenna stephensi</i>		Nationally Notable A	S3.1
<i>Eana argentana</i>		pRDB1	S3.1
<i>Eana penziana</i>		Nationally Notable B	S3.2
<i>Ectoedemia agrimoniae</i>		pRDB3	S3.1
<i>Ectoedemia amani</i>		pRDB1	S3.1
<i>Ectoedemia arcuatella</i>		Nationally Notable A	S3.1
<i>Ectoedemia decentella</i>		Nationally Notable B	S3.2
<i>Ectoedemia erythrogenella</i>		Nationally Notable B	S3.2
<i>Ectoedemia hannoverella</i>		pRDB3	S3.1
<i>Ectoedemia heckfordi</i>		pRDB1	S3.1
<i>Ectoedemia heringella</i>		Nationally Notable B	S3.2
<i>Ectoedemia rubivora</i>		Nationally Notable B	S3.2
<i>Ectoedemia sericopeza</i>		Nationally Notable A	S3.1
<i>Ectoedemia spinosella</i>		Nationally Notable B	S3.2
<i>Ectoedemia turbidella</i>		pRDB3	S3.1
<i>Ectoedemia weaveri</i>		Nationally Notable B	S3.2
<i>Elachista adscitella</i>		Nationally Notable B	S3.2
<i>Elachista alpinella</i>		Nationally Notable B	S3.2
<i>Elachista bedellella</i>		Nationally Notable B	S3.2
<i>Elachista biatomella</i>		Nationally Notable B	S3.2
<i>Elachista cahorsensis</i>		pRDB2	S3.1
<i>Elachista cinereopunctella</i>		Nationally Notable B	S3.2
<i>Elachista cingillella</i>		pRDB1	S3.1
<i>Elachista collitella</i>		pRDB1	S3.1
<i>Elachista consortella</i>		Nationally Notable B	S3.2
<i>Elachista eleochariella</i>		Nationally Notable A	S3.1
<i>Elachista eskoi</i>		pRDB2	S3.1
<i>Elachista littoricola</i>		pRDB1	S3.1
<i>Elachista nobilella</i>		pRDB3	S3.1
<i>Elachista obliquella</i>		Nationally Notable B	S3.2
<i>Elachista orstadii</i>		pRDB3	S3.1
<i>Elachista poae</i>		Nationally Notable B	S3.2
<i>Elachista pomerana</i>		pRDB1	S3.1
<i>Elachista regificella</i>		Nationally Notable B	S3.2
<i>Elachista scirpi</i>		Nationally Notable A	S3.1
<i>Elachista serricornis</i>		Nationally Notable A	S3.1
<i>Elachista stabilella</i>		Nationally Notable B	S3.2
<i>Elachista subnigrella</i>		Nationally Notable B	S3.2
<i>Elachista subocellea</i>		Nationally Notable B	S3.2
<i>Elachista tengstromi</i>		pRDBK	S3.1
<i>Elachista trapeziella</i>		Nationally Notable A	S3.1

<i>Elachista triseriatella</i>		Nationally Notable A	S3.1
<i>Elachista unifasciella</i>		pRDB3	S3.1
<i>Elachista utonella</i>		Nationally Notable B	S3.2
<i>Elegia similella</i>		Nationally Notable B	S3.2
<i>Emmelina argoteles</i>	Reedbed Plume	pRDB1	S3.1
<i>Endothenia pullana</i>		Nationally Notable A	S3.1
<i>Endothenia ustulana</i>		Nationally Notable B	S3.2
<i>Enteucha acetosae</i>		Nationally Notable A	S3.1
<i>Epermenia aequidentellus</i>		Nationally Notable A	S3.1
<i>Epermenia farreni</i>		pRDB1	S3.1
<i>Epermenia insecurella</i>		UK Priority Species (NERC Act S41); pRDB2	S3.1
<i>Epermenia profugella</i>		pRDB2	S3.1
<i>Ephestia elutella</i>	Cacao Moth	Nationally Notable B	S3.2
<i>Epiblema cnicicolana</i>		pRDB3	S3.1
<i>Epiblema grandaevana</i>		pRDB2	S3.1
<i>Epiblema turbidana</i>		Nationally Notable B	S3.2
<i>Epichnopterix plumella</i>		Nationally Notable A	S3.1
<i>Epinotia crenana</i>		pRDB2	S3.1
<i>Epinotia fraternana</i>		Nationally Notable B	S3.2
<i>Epinotia maculana</i>		Nationally Notable B	S3.2
<i>Epinotia mercuriana</i>		Nationally Notable B	S3.2
<i>Epinotia nanana</i>		Nationally Notable B	S3.2
<i>Epinotia nemorivaga</i>		Nationally Notable A	S3.1
<i>Epinotia nigricana</i>		pRDB1	S3.1
<i>Epinotia pygmaeana</i>		Nationally Notable B	S3.2
<i>Epinotia sordidana</i>		Nationally Notable B	S3.2
<i>Epinotia subsequana</i>		pRDB2	S3.1
<i>Epischnia asteris</i>		Nationally Notable A	S3.1
<i>Eriopsela quadrana</i>		pRDB3	S3.1
<i>Ethmia bipunctella</i>		Nationally Notable B	S3.2
<i>Ethmia pyrausta</i>		pRDB1	S3.1
<i>Ethmia quadrillella</i>		Nationally Notable B	S3.2
<i>Ethmia terminella</i>		Nationally Notable A	S3.1
<i>Eucosma aemulana</i>		pRDB2	S3.1
<i>Eucosma aspidiscana</i>		Nationally Notable B	S3.2
<i>Eucosma lacteana</i>		Nationally Notable A	S3.1
<i>Eucosma metzneriana</i>		pRDB3	S3.1
<i>Eucosma pupillana</i>		Nationally Notable B	S3.2
<i>Eucosma rubescana</i>		pRDB2	S3.1
<i>Eudarcia richardsoni</i>		UK Priority Species (NERC Act S41); pRDB1	S3.1
<i>Eudemis porphyrana</i>		Nationally Notable A	S3.1

<i>Eudonia alpina</i>		Nationally Notable A	S3.1
<i>Eudonia delunella</i>		Nationally Notable B	S3.2
<i>Eudonia lineola</i>		Nationally Notable B	S3.2
<i>Euhyponomeuta stannella</i>		pRDB1	S3.1
<i>Eulamprotes immaculatella</i>		pRDB3	S3.1
<i>Eulamprotes unicolorella</i>		Nationally Notable B	S3.2
<i>Eulamprotes wilkella</i>		Nationally Notable B	S3.2
<i>Eupoecilia ambiguella</i>	Vine Moth	Nationally Notable B	S3.2
<i>Euzophera cinerosella</i>		Nationally Notable B	S3.2
<i>Evergestis limbata</i>		Nationally Notable B	S3.2
<i>Exaeretia allisella</i>		Nationally Notable A	S3.1
<i>Exaeretia ciniflonella</i>		pRDB1	S3.1
<i>Falseuncaria degreyana</i>		pRDB2	S3.1
<i>Gelechia cuneatella</i>		pRDB1	S3.1
<i>Gelechia hippophaella</i>		pRDB2	S3.1
<i>Gelechia muscosella</i>		pRDB3	S3.1
<i>Gelechia nigra</i>		Nationally Notable A	S3.1
<i>Gelechia rhombella</i>		Nationally Notable B	S3.2
<i>Gelechia scotinella</i>		pRDB2	S3.1
<i>Gelechia senticetella</i>		Nationally Notable B	S3.2
<i>Gelechia turpella</i>		pRDB2	S3.1
<i>Gillmeria ochrodactyla</i>	Tansy Plume	Nationally Notable B	S3.2
<i>Glyphipterix equitella</i>		pRDB3	S3.1
<i>Glyphipterix schoenicolella</i>		Nationally Notable A	S3.1
<i>Grapholita caecana</i>		pRDB3	S3.1
<i>Grapholita gemmiferana</i>		pRDB1	S3.1
<i>Grapholita lathyrana</i>		pRDB1	S3.1
<i>Grapholita lobarzewskii</i>		Nationally Notable A	S3.1
<i>Grapholita lunulana</i>		Nationally Notable B	S3.2
<i>Grapholita orobana</i>		pRDB3	S3.1
<i>Grapholita pallifrontana</i>		UK Priority Species (NERC Act S41); pRDB3	S3.1
<i>Gymnancyla canella</i>		Nationally Notable A	S3.1
<i>Gynnidomorpha alismana</i>		Nationally Notable B	S3.2
<i>Gynnidomorpha luridana</i>		Nationally Notable A	S3.1
<i>Gynnidomorpha minimana</i>		pRDB2	S3.1
<i>Gynnidomorpha permixtana</i>		pRDB1	S3.1
<i>Gypsonoma minutana</i>		Nationally Notable B	S3.2
<i>Gypsonoma oppressana</i>		Nationally Notable B	S3.2
<i>Haplotinea insectella</i>		Nationally Notable B	S3.2

<i>Helcystogramma lutatella</i>		pRDB1	S3.1
<i>Hellinsia chrysocomae</i>	Scarce Goldenrod Plume	pRDB1	S3.1
<i>Hellinsia lienigianus</i>	Mugwort Plume	Nationally Notable B	S3.2
<i>Hellinsia tephradactyla</i>	Plain Plume	Nationally Notable B	S3.2
<i>Homoeosoma nebulella</i>		Nationally Notable B	S3.2
<i>Homoeosoma nimbella</i>		pRDB2	S3.1
<i>Hypochalcia ahenella</i>		Nationally Notable B	S3.2
<i>Infurcitinea albicomella</i>		pRDB1	S3.1
<i>Infurcitinea captans</i>		pRDB1	S3.1
<i>Ischnoscia borreonella</i>		pRDB1	S3.1
<i>Isophrictis striatella</i>		Nationally Notable B	S3.2
<i>Kessleria saxifragae</i>		pRDB3	S3.1
<i>Lampronia capitella</i>	Currant Shoot Borer	UK Priority Species (NERC Act S41); pRDB3	S3.1
<i>Lampronia corticella</i>	Raspberry Moth	Nationally Notable B	S3.1
<i>Lampronia flavimitrella</i>		pRDB3	S3.1
<i>Lampronia fuscata</i>		Nationally Notable B	S3.2
<i>Lampronia luzella</i>		Nationally Notable B	S3.2
<i>Lampronia morosa</i>		Nationally Notable B	S3.2
<i>Lampronia pubicornis</i>		pRDB1	S3.1
<i>Leucoptera lathyrioliella</i>		pRDB2	S3.1
<i>Leucoptera lotella</i>		Nationally Notable A	S3.1
<i>Leucoptera orobi</i>		pRDB1	S3.1
<i>Leucospilapteryx omissella</i>		Nationally Notable B	S3.2
<i>Levipalpus hepatariella</i>		pRDB1	S3.1
<i>Lobesia occidentis</i>		pRDB2	S3.1
<i>Luffia lapidella</i>		pRDB1	S3.1
<i>Lyonetia prunifoliella</i>		pRDB1	S3.1
<i>Mecyna asinalis</i>		Nationally Notable B	S3.2
<i>Mecyna flavalis</i>		pRDB3	S3.1
<i>Merrifieldia baliodactylus</i>	Dingy White Plume	Nationally Notable B	S3.2
<i>Merrifieldia tridactyla</i>	Western Thyme Plume	pRDB1	S3.1
<i>Metzneria aestivella</i>		Nationally Notable B	S3.2
<i>Metzneria aprilella</i>		Nationally Notable B	S3.2
<i>Metzneria littorella</i>		pRDB1	S3.1
<i>Metzneria neuropterella</i>		pRDB2	S3.1
<i>Micropterix mansuetella</i>		Nationally Notable B	S3.2
<i>Mirificarma lentiginosella</i>		Nationally Notable A	S3.1

<i>Moitrelia obductella</i>		pRDB3	S3.1
<i>Mompha bradleyi</i>		Nationally Notable B	S3.2
<i>Mompha divisella</i>		Nationally Notable A	S3.1
<i>Mompha jurassicella</i>		Nationally Notable A	S3.1
<i>Mompha lacteella</i>		Nationally Notable B	S3.2
<i>Mompha sturnipennella</i>		Nationally Notable B	S3.2
<i>Mompha terminella</i>		Nationally Notable B	S3.2
<i>Monochroa arundinetella</i>		pRDB1	S3.1
<i>Monochroa conspersella</i>		pRDB2	S3.1
<i>Monochroa divisella</i>		pRDB1	S3.1
<i>Monochroa elongella</i>		pRDB1	S3.1
<i>Monochroa hornigi</i>		Nationally Notable A	S3.1
<i>Monochroa lutulentella</i>		Nationally Notable B	S3.2
<i>Monochroa moyses</i>		Nationally Notable A	S3.1
<i>Monochroa niphognatha</i>		pRDB1	S3.1
<i>Monochroa palustrellus</i>		Nationally Notable B	S3.2
<i>Monochroa suffusella</i>		pRDB3	S3.1
<i>Monochroa tetragonella</i>		pRDB1	S3.1
<i>Monopis fenestratella</i>		pRDB2	S3.1
<i>Monopis imella</i>		Nationally Notable B	S3.2
<i>Monopis monachella</i>		pRDB3	S3.1
<i>Myrmecozela ochraceella</i>		pRDB2	S3.1
<i>Nascia ciliaris</i>		Nationally Notable B	S3.2
<i>Nemapogon granella</i>	Corn Moth	Nationally Notable B	S3.2
<i>Nemapogon inconditella</i>		pRDB1	S3.1
<i>Nemapogon ruricolella</i>		Nationally Notable B	S3.2
<i>Nemapogon variatella</i>		pRDB3	S3.1
<i>Nemapogon wolffiella</i>		Nationally Notable B	S3.2
<i>Nematopogon pilella</i>		Nationally Notable A	S3.1
<i>Nemaxera betulina</i>		Nationally Notable B	S3.2
<i>Nemophora cupriacella</i>		Nationally Notable B	S3.2
<i>Nemophora fasciella</i>		UK Priority Species Nationally Notable A	S3.1
<i>Nemophora metallica</i>		Nationally Notable B	S3.2
<i>Nemophora minimella</i>		Nationally Notable B	S3.2
<i>Neofriseria peliella</i>		pRDB2	S3.1
<i>Neofriseria singula</i>		pRDB1	S3.1
<i>Niditinea striolella</i>		Nationally Notable B	S3.2
<i>Nothris congressariella</i>		pRDB1	S3.1
<i>Notocelia incarnatana</i>		Nationally Notable B	S3.2
<i>Notocelia tetragonana</i>		Nationally Notable A	S3.1
<i>Nyctegretis lineana</i>		pRDB3	S3.1
<i>Ochsenheimeria taurella</i>		Nationally Notable B	S3.2

<i>Ochsenheimeria urella</i>		Nationally Notable B	S3.2
<i>Ochsenheimeria vacculella</i>	Cereal Stem Moth	Nationally Notable A	S3.1
<i>Ocnerostoma piniariella</i>		Nationally Notable B	S3.2
<i>Oecophora bractella</i>		Nationally Notable A	S3.1
<i>Oegoconia caradjai</i>		Nationally Notable B	S3.2
<i>Oinophila v-flava</i>	Yellow V Moth	pRDB2	S3.1
<i>Olethreutes arcuella</i>		Nationally Notable B	S3.2
<i>Oncocera semirubella</i>		Nationally Notable B	S3.2
<i>Ortholepis betulae</i>		Nationally Notable B	S3.2
<i>Oxyptilus parvidactyla</i>	Small Plume	Nationally Notable B	S3.2
<i>Pachythelia villosella</i>		pRDB2	S3.1
<i>Pammene agnotana</i>		pRDB1	S3.1
<i>Pammene gallicana</i>		Nationally Notable B	S3.2
<i>Pammene giganteana</i>		Nationally Notable B	S3.2
<i>Pammene herrichiana</i>		Nationally Notable A	S3.1
<i>Pammene ignorata</i>		pRDB2	S3.1
<i>Pammene luedersiana</i>		pRDB1	S3.1
<i>Pammene obscurana</i>		Nationally Notable A	S3.1
<i>Pammene ochsenheimeriana</i>		pRDB2	S3.1
<i>Pammene populana</i>		Nationally Notable B	S3.2
<i>Pammene spiniana</i>		Nationally Notable B	S3.2
<i>Pammene splendidulana</i>		Nationally Notable B	S3.2
<i>Pammene suspectana</i>		pRDB2	S3.1
<i>Pammene trauniana</i>		Nationally Notable A	S3.1
<i>Pancalia schwarzella</i>		pRDB2	S3.1
<i>Pandemis dumetana</i>		pRDB2	S3.1
<i>Paramesia gnomana</i>		pRDB1	S3.1
<i>Paratalanta hyalinalis</i>		Nationally Notable B	S3.2
<i>Paratalanta pandalis</i>	Bordered Pearl	Nationally Notable A	S3.1
<i>Parectopa ononidis</i>		Nationally Notable B	S3.2
<i>Parornix alpicola</i>		pRDB1	S3.1
<i>Parornix carpinella</i>		Nationally Notable A	S3.1
<i>Parornix loganella</i>		Nationally Notable B	S3.2
<i>Pediasia aridella</i>		Nationally Notable B	S3.2
<i>Pediasia contaminella</i>		Nationally Notable B	S3.2
<i>Pediasia fascelinella</i>		pRDB3	S3.1
<i>Pelochrista caecimaculana</i>		Nationally Notable A	S3.1
<i>Pempelia genistella</i>		Nationally Notable B	S3.2
<i>Pempeliella ornatella</i>		pRDB1	S3.1
<i>Periclepsis cinctana</i>		pRDB1	S3.1
<i>Perittia obscurepunctella</i>		Nationally Notable B	S3.2

<i>Pexicopia malvella</i>	Hollyhock Seed Moth	Nationally Notable B	S3.2
<i>Phalonidia curvistrigana</i>		pRDB2	S3.1
<i>Phalonidia gilvicomana</i>		pRDB3	S3.1
<i>Phaneta pauperana</i>		pRDB3	S3.1
<i>Phaulernis dentella</i>		Nationally Notable A	S3.1
<i>Phaulernis fulviguttella</i>		Nationally Notable B	S3.2
<i>Phiaris metallica</i>		pRDB2	S3.1
<i>Phiaris micana</i>		Nationally Notable B	S3.2
<i>Phiaris obsoletana</i>		pRDB3	S3.1
<i>Phiaris palustrana</i>		Nationally Notable B	S3.2
<i>Philedonides lunana</i>		Nationally Notable B	S3.2
<i>Phtheochroa schreibersiana</i>		pRDB1	S3.1
<i>Phtheochroa sodaliana</i>		Nationally Notable B	S3.2
<i>Phyllocnistis ramulicola</i>		Nationally Notable A	S3.1
<i>Phyllocnistis xenia</i>		Nationally Notable B	S3.2
<i>Phyllonorycter anderidae</i>		Nationally Notable B	S3.2
<i>Phyllonorycter comparella</i>		Nationally Notable A	S3.1
<i>Phyllonorycter distentella</i>		pRDB2	S3.1
<i>Phyllonorycter dubitella</i>		Nationally Notable B	S3.2
<i>Phyllonorycter insignitella</i>		pRDB1	S3.1
<i>Phyllonorycter junoniella</i>		Nationally Notable B	S3.2
<i>Phyllonorycter kuhlweiniella</i>		pRDB3	S3.1
<i>Phyllonorycter mespilella</i>		Nationally Notable B	S3.2
<i>Phyllonorycter muelleriella</i>		Nationally Notable B	S3.2
<i>Phyllonorycter nigrescentella</i>		pRDB3	S3.1
<i>Phyllonorycter quinqueguttella</i>		Nationally Notable B	S3.2
<i>Phyllonorycter roboris</i>		Nationally Notable B	S3.2
<i>Phyllonorycter sagitella</i>		UK Priority Species pRDB2	S3.1
<i>Phyllonorycter scabiosella</i>		UK Priority Species pRDB2	S3.1
<i>Phyllonorycter scopariella</i>		Nationally Notable B	S3.2
<i>Phyllonorycter staintoniella</i>		pRDB1	S3.1
<i>Phyllonorycter ulicicolella</i>		Nationally Notable B	S3.2
<i>Phyllonorycter viminetorum</i>		Nationally Notable A	S3.1
<i>Pima boisduvaliella</i>		Nationally Notable A	S3.1
<i>Platyedra subcinerea</i>		Nationally Notable B	S3.2
<i>Platyptilia calodactyla</i>	Goldenrod	Nationally Notable A	S3.1

	Plume		
<i>Platyptilia isodactylus</i>	Hoary Plume	Nationally Notable B	S3.2
<i>Platytes alpinella</i>		Nationally Notable B	S3.2
<i>Plutella haasi</i>		pRDB1	S3.1
<i>Porritia galactodactyla</i>	Spotted White Plume	Nationally Notable B	S3.2
<i>Povolnya leucapennella</i>		Nationally Notable B	S3.2
<i>Prochoreutis myllerana</i>		Nationally Notable B	S3.2
<i>Prochoreutis sehestediana</i>		Nationally Notable B	S3.2
<i>Prolita sexpunctella</i>		Nationally Notable B	S3.2
<i>Prolita solutella</i>		pRDB2	S3.1
<i>Proutia betulina</i>		pRDB3	S3.1
<i>Psamathocrita argentella</i>		pRDB2	S3.1
<i>Psamathocrita osseella</i>		pRDB1	S3.1
<i>Pselnophorus heterodactyla</i>	Short-winged Plume	pRDB1	S3.1
<i>Pseudatemelia flavifrontella</i>		Nationally Notable B	S3.2
<i>Pseudatemelia subochreella</i>		Nationally Notable B	S3.2
<i>Pseudococcyx posticana</i>		Nationally Notable B	S3.2
<i>Pseudococcyx turionella</i>	Pine Bud Moth	Nationally Notable B	S3.2
<i>Pseudopostega auritella</i>		pRDB1	S3.1
<i>Pseudopostega crepusculella</i>		Nationally Notable B	S3.2
<i>Pseudosciaphila branderiana</i>		Nationally Notable B	S3.2
<i>Pseudotelphusa paripunctella</i>		Nationally Notable B	S3.2
<i>Pseudotelphusa scalella</i>		Nationally Notable B	S3.2
<i>Pyralis lienigialis</i>		pRDB2	S3.1
<i>Pyrausta cingulata</i>		Nationally Notable B	S3.2
<i>Pyrausta ostrinalis</i>		Nationally Notable B	S3.2
<i>Recurvaria nanella</i>		Nationally Notable B	S3.2
<i>Retinia resinella</i>	Pine Resin-gall Moth	Nationally Notable A	S3.1
<i>Rhigognostis annulatella</i>		Nationally Notable B	S3.2
<i>Rhigognostis incarnatella</i>		Nationally Notable A	S3.1
<i>Rhigognostis senilella</i>		Nationally Notable B	S3.2
<i>Rhopobota myrtiliana</i>		Nationally Notable B	S3.2
<i>Rhopobota stagnana</i>		Nationally Notable B	S3.2
<i>Rhopobota ustomaculana</i>		Nationally Notable A	S3.1
<i>Rhyacionia logaea</i>	Elgin Shoot	Nationally Notable A	S3.1

	Moth		
<i>Salebriopsis albicilla</i>		pRDB2	S3.1
<i>Schiffermuelleria grandis</i>		pRDB2	S3.1
<i>Sciota hostilis</i>		UK Priority Species (NERC Act S41); pRDB1	S3.1
<i>Scoparia ancipitella</i>		Nationally Notable B	S3.2
<i>Scrobipalpa artemisiella</i>	Thyme Moth	Nationally Notable B	S3.2
<i>Scrobipalpa atriplicella</i>		Nationally Notable B	S3.2
<i>Scrobipalpa clintoni</i>		Nationally Notable A	S3.1
<i>Scrobipalpa instabilella</i>		Nationally Notable B	S3.2
<i>Scrobipalpa murinella</i>		pRDB2	S3.1
<i>Scrobipalpa nitentella</i>		Nationally Notable B	S3.2
<i>Scrobipalpa obsoletella</i>		Nationally Notable B	S3.2
<i>Scrobipalpa ocellatella</i>	Beet Moth	Nationally Notable B	S3.2
<i>Scrobipalpa salicorniae</i>		Nationally Notable A	S3.1
<i>Scrobipalpa samadensis</i>		Nationally Notable B	S3.2
<i>Scrobipalpa suaedella</i>		Nationally Notable A	S3.1
<i>Scrobipalpula tussilaginis</i>		pRDB2	S3.1
<i>Scythris cicadella</i>		pRDB1	S3.1
<i>Scythris crassiuscula</i>		Nationally Notable B	S3.2
<i>Scythris empetrella</i>		pRDB2	S3.1
<i>Scythris fallacella</i>		pRDB1	S3.1
<i>Scythris grandipennis</i>		Nationally Notable B	S3.2
<i>Scythris inspersella</i>		pRDB2	S3.1
<i>Scythris limbella</i>		pRDB3	S3.1
<i>Scythris picaepennis</i>		Nationally Notable B	S3.2
<i>Scythris potentillella</i>		pRDB1	S3.1
<i>Scythris siccella</i>		UK Priority Species pRDB1	S3.1
<i>Selania leplastriana</i>		Nationally Notable A	S3.1
<i>Sorhagenia janiszewskae</i>		Nationally Notable A	S3.1
<i>Sorhagenia lophyrella</i>		Nationally Notable A	S3.1
<i>Sorhagenia rhamniella</i>		Nationally Notable A	S3.1
<i>Sparganothis pilleriana</i>		Nationally Notable A	S3.1
<i>Stathmopoda pedella</i>		Nationally Notable B	S3.2
<i>Stenoptilia millieridactyla</i>	Saxifrage Plume	Nationally Notable B	S3.2
<i>Stenoptinea cyaneimarmorella</i>		pRDB1	S3.1
<i>Stephensia brunnichella</i>		Nationally Notable B	S3.2
<i>Sterrhopterix fusca</i>		pRDB1	S3.1
<i>Stictea mygindiana</i>		Nationally Notable B	S3.2
<i>Stigmella aeneofasciella</i>		Nationally Notable B	S3.2
<i>Stigmella auromarginella</i>		pRDB2	S3.1
<i>Stigmella carpinella</i>		pRDB2	S3.1

<i>Stigmella desperatella</i>		pRDB1	S3.1
<i>Stigmella dryadella</i>		pRDB1	S3.1
<i>Stigmella filipendulae</i>		Nationally Notable B	S3.2
<i>Stigmella mespilicola</i>		pRDB2	S3.1
<i>Stigmella minusculella</i>		pRDB1	S3.1
<i>Stigmella paradoxa</i>		Nationally Notable B	S3.2
<i>Stigmella poterii</i>		Nationally Notable B	S3.2
<i>Stigmella pretiosa</i>		pRDBK	S3.1
<i>Stigmella prunetorum</i>		Nationally Notable B	S3.2
<i>Stigmella pyri</i>		Nationally Notable A	S3.1
<i>Stigmella spinosissimae</i>		pRDB2	S3.1
<i>Stigmella zelleriella</i>		UK Priority Species (NERC Act S41); pRDB1	S3.1
<i>Swammerdamia compunctella</i>		Nationally Notable A	S3.1
<i>Swammerdamia passerella</i>		pRDB2	S3.1
<i>Syncopacma albifrontella</i>		pRDB1	S3.1
<i>Syncopacma albipalpella</i>		UK Priority Species (NERC Act S41); pRDB1	S3.1
<i>Syncopacma cinctella</i>		Nationally Notable A	S3.1
<i>Syncopacma sangiella</i>		Nationally Notable A	S3.1
<i>Syncopacma suecicella</i>		UK Priority Species (NERC Act S41); pRDB1	S3.1
<i>Syncopacma vinella</i>		pRDB1	S3.1
<i>Telechrysis tripuncta</i>		Nationally Notable B	S3.2
<i>Teleiodes flavimaculella</i>		pRDB1	S3.1
<i>Teleiodes wagae</i>		Nationally Notable A	S3.1
<i>Thiodia citrana</i>		Nationally Notable B	S3.2
<i>Thiotricha subocellea</i>		Nationally Notable B	S3.2
<i>Thisanotia chrysonuchella</i>		Nationally Notable B	S3.2
<i>Tinagma balteolella</i>		pRDB2	S3.1
<i>Tinagma ocnestomella</i>		Nationally Notable B	S3.2
<i>Tinea columbariella</i>		Nationally Notable A	S3.1
<i>Tinea dubiella</i>		Nationally Notable A	S3.1
<i>Tinea flavescentella</i>		pRDB2	S3.1
<i>Triaxomasia caprimulgella</i>		pRDB1	S3.1
<i>Trichophaga tapetzella</i>	Tapestry Moth	pRDB3	S3.1
<i>Trifurcula beirnei</i>		pRDB1	S3.1
<i>Trifurcula cryptella</i>		Nationally Notable A	S3.1
<i>Trifurcula eurema</i>		pRDB3	S3.1
<i>Trifurcula headleyella</i>		pRDB2	S3.1
<i>Trifurcula squamatella</i>		pRDB1	S3.1
<i>Trifurcula subnitidella</i>		pRDB2	S3.1

<i>Udea decrepitalis</i>		Nationally Notable A	S3.1
<i>Udea uliginosalis</i>		Nationally Notable B	S3.2
<i>Vitula biviella</i>		Nationally Notable A	S3.1
<i>Wheeleria spilodactylus</i>	Horehound Plume	pRDB2	S3.1
<i>Whittleia retiella</i>		pRDB2	S3.1
<i>Xenolechia aethiops</i>		pRDB3	S3.1
<i>Xystophora pulveratella</i>		pRDB2	S3.1
<i>Yponomeuta irrorella</i>		pRDB2	S3.1
<i>Ypsolopha horridella</i>		Nationally Notable B	S3.2
<i>Ypsolopha lucella</i>		Nationally Notable A	S3.1
<i>Zeiraphera rufimitrana</i>		Nationally Notable A	S3.1

<i>Megaloptera</i>	Alder flies	<i>JNCC checklist: 2014-08-22</i>	
<i>Sialis nigripes</i>	an alder fly	Nationally Notable	S3.2
<i>Pseudoscorpiones</i>	False-scorpions	<i>JNCC checklist: 2014-08-22</i>	
<i>Dendrochernes cyrneus</i>	a false-scorpion	IUCN Red List Rare	S3.1

<i>Orthoptera</i>	Grasshoppers and crickets	<i>JNCC checklist: 2014-08-22</i> (none on checklist)	
<i>Gomphocerippus rufus</i>	Rufous Grasshopper	Gloucestershire is on the northernmost edge of the this species' UK range; less than 10% of 10km squares in the county	S3.6
<i>Omocestus rufipes</i>	Woodland Grasshopper	Gloucestershire is on the northernmost edge of the this species' UK range; less than 10% of 10km squares in Gloucestershire	S3.6
<i>Tettigonia viridissima</i>	Great Green Bush Cricket	Gloucestershire is on the northernmost edge of the this species' UK range; limited to scattered populations in 10% of 10km squares.	S3.6

<i>Odonata</i>	Dragonflies and damselflies	<i>JNCC checklist: 2014-08-22</i>	
<i>Aeshna juncea</i>	Common hawker	Less than 10% of Gloucestershire	S3.6

		hectads	
<i>Coenagrion pulchellum</i>	Variable damselfly	IUCN Red List Near Threatened	S3.1
<i>Cordulegaster boltonii</i>	Golden-ringed dragonfly	Less than 10% of Gloucestershire hectads	S3.6
<i>Cordulia aenea</i>	Downy Emerald	Found in less than 10% of UK 10km squares	S3.5
<i>Erythromma viridulum</i>	Small Red-eyed Damselfly	A recent coloniser; not threatened but its survival in future may depend on having strongholds further north than its previous distribution. KWS status may change over time.	S3.6
<i>Gomphus vulgatissimus</i>	Common Club-tail	IUCN Red List Near Threatened	S3.1
<i>Ischnura pumilio</i>	Scarce Blue-tailed Damselfly	IUCN Red List Near Threatened	S3.1
<i>Libellula fulva</i>	Scarce Chaser	IUCN Red List Near Threatened	S3.1 (S3.2?)
<i>Orthetrum coerulescens</i>	Keeled skimmer	Found in less than 10% of UK 10km squares	S3.5
<i>Platycnemis pennipes</i>	White-legged damselfly <i>or</i> Blue feather-leg	Found in less than 10% of UK 10km squares	S3.5
<i>Sympetrum danae</i>	Black darter	Less than 10% of Gloucestershire hectads	S3.6
Neuroptera	Lacewings	<i>JNCC checklist: 2014-08-22</i>	
<i>Chrysopa abbreviata</i>		Nationally Notable	S3.2
<i>Nothochrysa fulviceps</i>		Nationally Notable	S3.2
<i>Sisyra terminalis</i>		Nationally Notable	S3.2
Ephemeroptera	Mayflies	<i>JNCC checklist: 2014-08-22</i>	
<i>Baetis niger</i> (<i>was Nigrobaetis niger</i>)	southern iron blue mayfly	UK Priority Species (NERC Act S41)	S3.1
<i>Ephemera lineata</i>		IUCN Red List Vulnerable	S3.1
<i>Potamanthus luteus</i>	Yellow Mayfly	UK Priority Species (NERC Act S41), IUCN Red List Vulnerable	S3.1

<i>Plecoptera</i>	Stoneflies	<i>JNCC checklist: 2014-08-22</i>	
<i>Brachyptera putata</i>	Northern February Red	UK Priority Species (NERC Act S41), Nationally Notable; UK endemic, regionally extinct	S3.1
<i>Taeniopteryx nebulosa</i>	February Red	Taeniopteryx nebulosa subsp. brittanica is a IUCN Red List – Threatened endemic	S3.1

<i>Trichoptera</i>	Caddisflies	<i>JNCC checklist: 2011-01-21</i>	
<i>Ceraclea senilis</i>		Nationally Notable	
<i>Hydropsyche fulvipes</i>		Nationally Notable	
<i>Leptocerus interruptus</i>		IUCN Red List Rare	
<i>Metalype fragilis</i>		Nationally Notable	
<i>Oecetis notata</i>		IUCN Red List Rare	
<i>Ylodes conspersus</i>		Nationally Notable	
<i>Hemiptera</i>	True Bugs	<i>JNCC checklist: 2011-01-21</i>	
<i>Anthocoris visci</i>		Nationally Notable B	
<i>Canthophorus impressus</i>		Nationally Notable B	
<i>Catoplatus fabricii</i>		Nationally Notable B	
<i>Eurydema (Rubrodorsalium) dominulus</i>		Nationally Notable A	
<i>Hallodapus montandoni</i>		IUCN Red List Rare	
<i>Heterogaster artemisiae</i>		Nationally Notable B	
<i>Macroplax preyssleri</i>		IUCN Red List Rare	
<i>Nabis (Nabis) brevis</i>		IUCN Red List Rare	
<i>Ribautodelphax pungens</i>		Nationally Notable B	
<i>Tettigometra impressopunctata</i>		Nationally Notable B	
<i>Diptera</i>	True Flies	<i>JNCC checklist: 2011-01-21</i>	
<i>Allodia silvatica</i>		Nationally scarce	
<i>Anasimyia lunulata</i>		Nationally Notable	
<i>Asilus crabroniformis</i>	Hornet robberfly	UK Priority Species, Nationally Notable	
<i>Atrichops crassipes</i>	Least Water-snipefly	IUCN Red List Rare	

<i>Beris clavipes</i>	Scarce Orange Legionnaire	Nationally Notable	
<i>Bicellaria mera</i>		Nationally scarce	
<i>Bombylius canescens</i>		Nationally Notable	
<i>Bombylius discolor</i>	Dotted bee-fly	Nationally Notable	
<i>Botanophila sanctimarci</i>		IUCN Red List – Insufficiently known	
<i>Brachyopa insensilis</i>		Nationally Notable	
<i>Brachypalpus laphriformis</i>		Nationally Notable	
<i>Callicera aurata</i>		IUCN Red List Rare	
<i>Chalcosyrphus eunotus</i>		IUCN Red List Vulnerable	
<i>Cheilosia barbata</i>		Nationally Notable	
<i>Cheilosia carbonaria</i>		Nationally Notable	
<i>Cheilosia chrysocoma</i>		IUCN Red List Rare	
<i>Cheilosia nigripes</i>		IUCN Red List Rare	
<i>Cheilosia soror</i>		Nationally Notable	
<i>Cheilosia velutina</i>		Nationally Notable	
<i>Chlorops varsoviensis</i>		Nationally Notable	
<i>Chorisops nagatomii</i>		Nationally Notable	
<i>Cistogaster globosa</i>		IUCN Red List Endangered	
<i>Criorhina asilica</i>		Nationally Notable	
<i>Criorhina ranunculi</i>		Nationally Notable	
<i>Ctenophora atrata</i>		Nationally Notable	
<i>Ctenophora flaveolata</i>		IUCN Red List Vulnerable	
<i>Ctenophora pectinicornis</i>		Nationally Notable	
<i>Dicranota gracilipes</i>		Nationally Notable	
<i>Didea alneti</i>		IUCN Red List Endangered	
<i>Didea fasciata</i>		Nationally Notable	
<i>Dioctria oelandica</i>	Orange-legged Robberfly	Nationally Notable	
<i>Dioxya bidentis</i>		Nationally Notable	
<i>Dolichopus cilifemoratus</i>		Nationally scarce	
<i>Eggisops pecchiolii</i>		Nationally Notable	
<i>Empis laetabilis</i>		Nationally scarce	
<i>Epistrophe diaphana</i>		Nationally Notable	
<i>Erioptera verralli</i>		IUCN Red List Rare	
<i>Eumerus ornatus</i>		Nationally Notable	
<i>Eustalomyia vittipes</i>		Nationally Notable	

<i>Exechiopsis furcata</i>		Nationally scarce	
<i>Exechiopsis jenkinsoni</i>		Nationally scarce	
<i>Exechiopsis magnicauda</i>		IUCN Red List Near Threatened	
<i>Ferdinandea ruficornis</i>		Nationally Notable	
<i>Gasterophilus intestinalis</i>	Horse Bot Fly	Nationally Notable	
<i>Gasterophilus nasalis</i>		IUCN Red List Endangered	
<i>Geomyza angustipennis</i>		IUCN Red List Rare	
<i>Gnophomyia viridipennis</i>		Nationally Notable	
<i>Goniglossum wiedemanni</i>		Nationally Notable	
<i>Gonomyia abbreviata</i>		IUCN Red List Rare	
<i>Gonomyia bifida</i>		Nationally Notable	
<i>Gonomyia conoviensis</i>		Nationally Notable	
<i>Haematopota bigoti</i>		IUCN Red List Rare	
<i>Helius pallirostris</i>		Nationally Notable	
<i>Hilara media</i>		Nationally scarce	
<i>Hybomitra lurida</i>		IUCN Red List Rare	
<i>Hybomitra muehlfeldi</i>		IUCN Red List Rare	
<i>Hydrotaea borussica</i>		Nationally Notable	
<i>Ictericia westermanni</i>		Nationally Notable	
<i>Keroplatus testaceus</i>		Nationally scarce	
<i>Lasiopogon cinctus</i>	Spring Heath Robberfly	Nationally Notable	
<i>Leopoldius brevirostris</i>		IUCN Red List Vulnerable	
<i>Leopoldius signatus</i>		Nationally Notable	
<i>Limnophila mundata</i>		Nationally Notable	
<i>Limnophila verralli</i>		Nationally Notable	
<i>Limonia lucida</i>		Nationally Notable	
<i>Limonia ornata</i>		Nationally Notable	
<i>Limonia trivittata</i>		Nationally Notable	
<i>Lipsothrix nervosa</i>	Southern Yellow Splinter	UK Priority Species	
<i>Lipsothrix nigristigma</i>	Scarce Yellow Splinter	UK Priority Species	
<i>Machimus rusticus</i>	Downland Robberfly	IUCN Red List Vulnerable	
<i>Macronychia polyodon</i>		IUCN Red List Rare	
<i>Melangyna barbifrons</i>		Nationally Notable	
<i>Melangyna triangulifera</i>		Nationally Notable	

<i>Melanogaster aerea</i>		Nationally Notable	
<i>Metasyrphus nitens</i>		Nationally Notable	
<i>Molophilus corniger</i>		Nationally Notable	
<i>Molophilus propinquus</i>		Nationally Notable	
<i>Myopa extricata</i>		IUCN Red List Rare	
<i>Nematoproctus distendens</i>		IUCN Red List Near Threatened	
<i>Neoascia geniculata</i>		Nationally Notable	
<i>Neoascia obliqua</i>		Nationally Notable	
<i>Neoempheria lineola</i>	giant wood-gnat	UK Priority Species, IUCN Red List Vulnerable	
<i>Neopachygaster meromelas</i>	Silver-strips Black	Nationally Notable	
<i>Odontomyia tigrina</i>		Nationally Notable	
<i>Ogcodes gibbosus</i>		Nationally Notable	
<i>Ogcodes pallipes</i>		Nationally Notable	
<i>Orthonevra brevicornis</i>		Nationally Notable	
<i>Orthonevra geniculata</i>		Nationally Notable	
<i>Oxycera analis</i>		IUCN Red List Vulnerable	
<i>Oxycera morrisii</i>	White-barred Soldier	Nationally Notable	
<i>Oxycera pardalina</i>	Hill Soldier	Nationally Notable	
<i>Oxycera pygmaea</i>		Nationally Notable	
<i>Oxycera terminata</i>		IUCN Red List Vulnerable	
<i>Paraclusia tigrina</i>		IUCN Red List Vulnerable	
<i>Paradelphomyia fuscula</i>		Nationally Notable	
<i>Paragus tibialis</i>		Nationally Notable	
<i>Parasyrphus nigratarsis</i>		IUCN Red List Endangered	
<i>Paroxyna absinthii</i>		Nationally Notable	
<i>Pelecocera tricincta</i>		IUCN Red List Rare	
<i>Pherbellia annulipes</i>		Nationally Notable	
<i>Pherbellia dorsata</i>		Nationally Notable	
<i>Pherbellia knutsoni</i>		IUCN Red List Rare	
<i>Pilaria fuscipennis</i>		Nationally Notable	
<i>Pipiza lugubris</i>		Nationally Notable	
<i>Pipizella virens</i>		Nationally Notable	
<i>Platycheirus discimanus</i>		Nationally Notable	
<i>Platycheirus</i>		Nationally Notable	

<i>immarginatus</i>			
<i>Platycheirus podagratus</i>		Nationally Notable	
<i>Platycheirus sticticus</i>		Nationally Notable	
<i>Pocota personata</i>		IUCN Red List Vulnerable	
<i>Psacadina verbekei</i>		Nationally Notable	
<i>Psilocephala melaleuca</i>		IUCN Red List Endangered	
<i>Psilota anthracina</i>		IUCN Red List Vulnerable	
<i>Ptiolina obscura</i>		Nationally Notable	
<i>Ptychoptera longicauda</i>		Nationally scarce	
<i>Rhagio annulatus</i>		IUCN Red List Rare	
<i>Rhamphomyia physoprocta</i>		IUCN Red List Near Threatened	
<i>Scathophaga tinctinervis</i>		IUCN Red List Vulnerable	
<i>Scleroprocta pentagonalis</i>		IUCN Red List Rare	
<i>Sphegina verecunda</i>		Nationally Notable	
<i>Stratiomys chamaeleon</i>	Clubbed General	IUCN Red List Endangered	
<i>Stratiomys potamida</i>		Nationally Notable	
<i>Stratiomys singularior</i>		Nationally Notable	
<i>Symphoromyia immaculata</i>		Nationally Notable	
<i>Syndyas nigripes</i>		IUCN Red List Near Threatened	
<i>Tasiocera fuscescens</i>		IUCN Red List Endangered	
<i>Terellia winthemi</i>		IUCN Red List Rare	
<i>Tetanocera punctifrons</i>		Nationally Notable	
<i>Thaumastoptera calceata</i>		Nationally Notable	
<i>Thecophora fulvipes</i>		Nationally Notable	
<i>Thereva plebeja</i>	Crochet-hooked Stiletto	Nationally Notable	
<i>Tipula alpina</i>		IUCN Red List Rare	
<i>Tipula nubeculosa</i>		Nationally Notable	
<i>Tipula pseudovariipennis</i>		Nationally Notable	
<i>Tipula selene</i>		IUCN Red List Rare	
<i>Tomosvaryella cilitarsis</i>		Nationally scarce	
<i>Urophora solstitialis</i>		IUCN Red List Rare	
<i>Vanoyia tenuicornis</i>	Long-horned Soldier	Nationally Notable	
<i>Volucella inanis</i>	Lesser Hornet Hoverfly	Nationally Notable	

<i>Volucella inflata</i>		Nationally Notable	
<i>Volucella zonaria</i>	Hornet Hoverfly	Nationally Notable	
<i>Xanthandrus comtus</i>		Nationally Notable	
<i>Xylota abiens</i>		Nationally Notable	
<i>Xylota florum</i>		Nationally Notable	
<i>Xylota jakutorum</i>		Nationally Notable	
<i>Xylota tarda</i>		Nationally Notable	
<i>Xylota xanthocnema</i>		Nationally Notable	
<i>Zodion notatum</i>		IUCN Red List Rare	

	Ants	<i>JNCC checklist: 2014-08-22</i>	
<i>Formica rufa</i>	Red ant	Nationally declining; widespread in Gloucestershire	S3.5
<i>Formica sanguinea</i>	Slaver Ant	Nationally Notable B, Known from less than 10 sites in Glos	S3.1
<i>Formicoxenus nitidulus</i>	Shining Guest Ant	UK Priority Species (NERC Act S41), Known from less than 10 sites in Glos	S3.1
<i>Lasius brunneus</i>	Brown Ant	Nationally Notable A; widely distributed in Gloucestershire	S5.3
<i>Lasius mixtus</i>		Known from less than 10 sites in Glos	S3.6
<i>Lasius umbratus</i>		Known from less than 10 sites in Glos	S3.6
<i>Stenamma debile</i>		Known from less than 10 sites in Glos	S3.6
Araneae	Spiders	<i>JNCC checklist: 2014-08-22</i>	
<i>!List needs reviewing</i>			
<i>Episinus maculipes</i>		Red Listing based on pre 1994 IUCN guidelines - rare nationally and in Gloucestershire	S3.1
<i>Glyphesis servulus</i>		Red list: insufficient data. Known from one site in Gloucestershire.	S3.1
<i>Monocephalus castaneipes</i>	Broad Groove-head Spider (a money-spider)	UK Priority Species (NERC Act S41); very sparse UK distribution; known from less than 10 sites in the county	S3.1

Mollusca	Slugs, snails & shellfish	JNCC checklist: 2014-08-22	
Note: mollusc lists are grouped and colour-coded to indicate specific habitat preferences			
Freshwater habitats			
<i>Aplexa hypnorum</i>	Moss bladder snail	Less than 10 sites known in Gloucestershire	S3.6
<i>Bithynia leachi</i>		Restricted to 10% of 10km squares in Gloucestershire; indicative of high quality waterbodies	S3.6
<i>Myxas glutinosa*</i>	Glutinous snail	UK Priority Species (NERC Act S41 not specified), Schedule 5, IUCN	S3.1

		GB Red List: Endangered; Global Red List: Data Deficient; extinct in Gloucestershire?	
<i>Pisidium henslowanum</i>	Henslow's pea mussel	Restricted to 10% of 10km squares in Gloucestershire; indicative of high quality waterbodies	S3.6
<i>Pisidium hibernicum</i>	Globular pea mussel	Restricted to 10% of 10km squares in Gloucestershire; indicative of high quality waterbodies; sparse UK distribution	S3.6
<i>Pisidium tenilineatum</i> (RDB-rare)	Freshwater pea mussel/Fine-lined pea mussel	UK Priority Species (NERC Act S41); IUCN Red List - Rare (pre-1994 Guidelines)	S3.1
<i>Pisidium pulchellum</i>	Iridescent pea mussel	Known from less than 10% of 10km squares in Gloucestershire; indicative of high quality waterbodies; sparse UK distribution	S3.6
<i>Pisidium pseudosphaerium</i>		IUCN Red List - Rare (pre-1994 Guidelines); NOT found in Gloucestershire but may be present; include as a S3.1 species if found	S3.1
<i>Pseudanodonta complanata</i>		IUCN Red List - Vulnerable; UK Priority Species (NERC Act S41)	S3.1
<i>Unio pictorum</i>	Painter's mussel	Scarce & uncertain distribution in Gloucestershire; vulnerable to habitat degradation	S3.6
<i>Unio tumidus</i>	Swollen river mussel	Scarce & uncertain distribution in Gloucestershire; vulnerable to habitat degradation	S3.6
<i>Segmentina nitida</i>	Shining Ram's-horn Snail	UK Priority Species (NERC Act S41); IUCN Red List Endangered (pre-1994 Guidelines); extinct in Gloucestershire? (one old record)	S3.1
<i>Sphaerium rivicola</i>	Nut orb mussel	Scarce & uncertain distribution in Gloucestershire; vulnerable to	S3.6

		habitat degradation	
<i>Margaritifera margaritifera</i>	Freshwater Pearl Mussel	UK Priority Species, Schedule 5, Habitats Directive Annex 2, IUCN Red List Endangered, Bern Convention Appendix 3; extinct in Gloucestershire?	S3.1
Woodland			
<i>Acicula fusca</i>	Point snail	Ancient woodland indicator. Known from less than 10% of 10km squares in the county. Thought to be declining nationally, and sparsely distributed.	S3.6
<i>Leiostryla anglica</i>	English chrysalis snail	Ancient woodland indicator. Known from less than 10% of 10km squares in the county. Thought to be declining nationally, and sparsely distributed.	S3.6
<i>Spermodea lamellata</i> *	Plaited snail	Ancient woodland indicator. Extinct in Gloucestershire? Declining nationally, only known in Glos from one old record.	S3.6
<i>Limax cinereoniger</i>	Ash-black slug	Ancient woodland indicator. Sparsely distributed nationally, and very local in Gloucestershire	S3.6
<i>Malacolimax tenellus (was Limax tenellus)</i>	Lemon slug	Ancient woodland indicator. Known from less than 10% of 10km squares in the county. Thought to be declining nationally, and sparsely distributed.	S3.6
<i>Helicigona lapicida</i>	Lapidary snail	Ancient woodland indicator. Widely distributed in Gloucestershire but few recent records. Thought to be declining nationally.	S3.6
<i>Ena montana</i>	Mountain Bulin	Ancient woodland indicator.	S3.1

		IUCN Red List Rare (pre-1994 Guidelines). Cotswolds is thought to be its main UK stronghold.	
<i>Phenacolimax major</i>	Greater semi-slug	Ancient woodland indicator. Scarce and local nationally, known from less than 10% of 10km squares in Gloucestershire, national population thought to be in decline.	S3.6
<i>Macrogasta rolfii</i>	Rolph's door snail	Ancient woodland indicator. Gloucestershire is at the north edge of a limited UK distribution. Few recent records.	S3.6
<i>Helix pomatia</i>	Roman snail	Habitats Directive Appendix 5, Bern Convention Appendix 3, Schedule 5, rare in Gloucestershire	S3.2
<i>Vertigo substriata</i>	Striated whorl snail	Ancient woodland indicator. Scarce and local nationally, known from less than 10% of 10km squares in Gloucestershire, national population thought to be in decline. Also found in wetland habitats.	S3.6
<i>Zonitoides excavatus</i>	Hollowed glass snail	Ancient woodland indicator. Few recent records in Gloucestershire. Thought to be declining nationally.	S3.6
Calcareous grassland			
<i>Abida secale</i>	Large chrysalis snail	Highly specific habitat requirements, very localised UK distribution. Limited Gloucestershire distribution on dry limestone grassland.	S3.6
<i>Truncatellina cylindrica</i>	Cylindrical whorl snail	IUCN Red List Vulnerable (pre-1994 Guidelines); UK Priority Species (NERC Act S41); extinct in Gloucestershire?	S3.1
<i>Pupilla muscorum</i>	Moss chrysalis snail	Highly specific habitat requirements. Limited	S3.6

		Gloucestershire distribution on dry limestone grassland.	
<i>Helicella itala</i>	Heath snail	Highly specific habitat requirements. Limited Gloucestershire distribution on dry limestone grassland.	S3.6
Walls and scree			
<i>Lauria sempronii</i>		IUCN Red List Endangered (pre-1994 Guidelines); less than 10 sites in Gloucestershire	S3.1
<i>Vertigo pusilla</i>	Wall whorl snail	Known from less than 10 sites in Gloucestershire.	S3.6
Wetland			
<i>Ashfordia granulata</i> **	Silky snail	Limited Gloucestershire distribution; vulnerable to habitat degradation.	S3.2
<i>Oxyloma sarsi</i> ***		IUCN Red List: Vulnerable (pre-1994 Guidelines). NOT yet found in Gloucestershire.	S3.1
<i>Zonitoides nitidus</i> **	Shiny glass snail	Limited Gloucestershire distribution; vulnerable to habitat degradation, few recent records.	S3.2
<i>Vertigo antivertigo</i>	Marsh whorl snail	Limited Gloucestershire distribution; vulnerable to habitat degradation, few recent records.	S3.6
<i>Vertigo angustior</i> ***		UK Priority Species (NERC Act S41), Habitats Directive Annex 2, IUCN Global Red List: Lower risk/Conservation dependent; IUCN GB Red List (pre-1994): Rare. NOT yet found in Gloucestershire	S3.1
<i>Vertigo moulinsiana</i>	Desmoulin's Whorl Snail	UK Priority Species (NERC Act S41), Habitats Directive Annex 2, IUCN Global Red List: Lower risk/Conservation dependent; IUCN GB Red List (pre-1994): Rare	S3.1

VERTEBRATES

Fish			
<i>Agnatha</i>	Jawless fish	<i>JNCC checklist: 2011-01-21</i>	
<i>Lampetra fluviatilis</i>	River Lamprey	UK Priority Species, The Conservation of Habitats and Species Regulations 2010 Schedule 3, Bern Convention Appendix 3, Habitats Directive Annex 2	
<i>Lampetra planeri</i>	Brook Lamprey	Bern Convention Appendix 3, Habitats Directive Annex 2	
<i>Actinopterygii</i>	Bony fish		
<i>Alosa alosa</i>	Allis Shad	UK Priority Species, Schedule 5, The Conservation of Habitats and Species Regulations 2010 Schedule 3, Bern Convention Appendix 3	
<i>Alosa fallax</i>	Twaite Shad	UK Priority Species, Schedule 5, The Conservation of Habitats and Species Regulations 2010 Schedule 3, Bern Convention Appendix 3	
<i>Ammodytes marinus</i>	Lesser Sandeel	UK Priority Species	
<i>Anguilla anguilla</i>	European Eel	UK Priority Species, IUCN Red List Critically Endangered	
<i>Barbus barbus</i>	Barbel	The Conservation of Habitats and Species Regulations 2010 Schedule 3	
<i>Cobitis taenia</i>	Spined Loach	UK Priority Species, Bern Convention Appendix 3, Habitats Directive Annex 2	
<i>Cottus gobio</i>	Bullhead	Habitats Directive Annex 2	
<i>Lota lota</i>	Burbot	UK Priority Species, Schedule 5	
<i>Salmo salar</i>	Atlantic Salmon	UK Priority Species, The Conservation of Habitats and Species Regulations 2010 Schedule 3, Bern Convention Appendix 3, Habitats Directive Annex 2	
<i>Salmo trutta</i>	Brown/Sea Trout	UK Priority Species	
<i>Thymallus thymallus</i>	Grayling	The Conservation of Habitats and Species Regulations 2010 Schedule 3, Bern Convention Appendix 3	

Amphibians			
		<i>JNCC checklist: 2011-01-21</i>	
<i>Bufo bufo</i>	Common Toad	UK Priority Species, Schedule 5, Bern Convention Appendix 3	
<i>Lissotriton helveticus</i>	Palmate Newt	Schedule 5, Bern Convention Appendix 3	
<i>Lissotriton vulgaris</i>	Smooth Newt	Schedule 5, Bern Convention Appendix 3	
<i>Rana temporaria</i>	Common Frog	Schedule 5, Bern Convention Appendix 3	
<i>Triturus cristatus</i>	Great crested newt (Warty newt)	UK Priority Species, Schedule 5, Bern Convention Appendix 2, The Conservation of Habitats and Species Regulations 2010 Schedule 2, Habitats Directive Annex 4	

Reptiles			
		<i>JNCC checklist: 2011-01-21</i>	
<i>Anguis fragilis</i>	Slow-Worm	UK Priority Species, Schedule 5, Bern Convention Appendix 3	
<i>Natrix natrix</i>	Grass snake	UK Priority Species, Schedule 5, Bern Convention Appendix 3	Special habitat: see H12.
<i>Vipera berus</i>	Adder	UK Priority Species, Schedule 5, Bern Convention Appendix 3	
<i>Zootoca vivipara</i>	Viviparous Lizard	UK Priority Species, Schedule 5, Bern Convention Appendix 3	

Birds			
		<i>JNCC checklist: 2011-01-21</i>	
<i>Accipiter gentilis</i>	Northern Goshawk	W&C Act Sch 1:1	S3.1
<i>Actitis hypoleucos</i>	Common Sandpiper	CoMS Annex II	S3.1
<i>Alauda arvensis</i>	Skylark	UK Priority Species, Bird Population Status: red	S3.1
<i>Alcedo atthis</i>	Kingfisher	W&C Act Sch 1:1, Bern Convention Appendix 2, Birds Directive Annex 1	S3.1
<i>Alle alle</i>	Little Auk	CoMS Annex II	S3.1
<i>Anas acuta</i>	Northern Pintail	CoMS Annex II	S3.1
<i>Anas clypeata</i>	Northern Shoveler	CoMS Annex II	S3.1

<i>Anas crecca</i>	Common Teal	CoMS Annex II	S3.1
<i>Anas penelope</i>	Eurasian Wigeon	CoMS Annex II	S3.1
<i>Anas platyrhynchos</i>	Mallard	CoMS Annex II	S3.1
<i>Anas querquedula</i>	Garganey	W&C Act Sch 1:1, CoMS Annex II	S3.1
<i>Anas strepera</i>	Gadwall	CoMS Annex II	S3.1
<i>Anser albifrons subsp. albifrons</i>	European White-fronted Goose	UK Priority Species, CoMS Annex II, Bird Population Status: red	S3.1
<i>Anser albifrons subsp. flavirostris</i>	Greenland White-fronted Goose	UK Priority Species, CoMS Annex II, Bird Population Status: red	S3.1
<i>Anser anser</i>	Greylag Goose	CoMS Annex II	S3.1
<i>Anser brachyrhynchus</i>	Pink footed Goose	CoMS Annex II	S3.1
<i>Anser erythropus</i>	Lesser White-fronted Goose	Global Red List: Vulnerable, Birds Directive Annex 1, Bern Convention Appendix 2, CoMS Annex II	S3.1
<i>Anser fabalis</i>	Bean Goose	CoMS Annex II	S3.1
<i>Anser fabalis subsp. fabalis</i>	Taiga Bean Goose	CoMS Annex II, Bird Population Status: red	S3.1
<i>Anthus pratensis</i>	Meadow Pipit	Bern Convention Appendix 2	S3.1
<i>Anthus spinoletta</i>	Water Pipit	Bern Convention Appendix 2	S3.1
<i>Anthus trivialis</i>	Tree Pipit	Bern Convention Appendix 2, UK Priority Species, Bird Population Status: red	S3.1
<i>Ardea cinerea</i>	Grey Heron	CoMS Annex II	S3.1
<i>Arenaria interpres</i>	Ruddy Turnstone	CoMS Annex II	S3.1
<i>Arenaria interpres</i>	Turnstone	Bern Convention Appendix 2	S3.1
<i>Asio flammeus</i>	Short-Eared Owl	Birds Directive Annex 1, Bern Convention Appendix 2	S3.1
<i>Asio otus</i>	Long-Eared Owl	Bern Convention Appendix 2	S3.1
<i>Athene noctua</i>	Little Owl	Bern Convention Appendix 2	S3.1
<i>Aythya ferina</i>	Common Pochard	CoMS Annex II	S3.1
<i>Aythya fuligula</i>	Tufted Duck	CoMS Annex II	S3.1
<i>Aythya marila</i>	Scaup	W&C Act Sch 1:1, CoMS Annex II, UK Priority Species, Bird Population Status: red	S3.1
<i>Bombycilla garrulus</i>	Waxwing	Bern Convention Appendix 2	S3.1
<i>Botaurus stellaris</i>	Great Bittern	Birds Directive Annex 1, Bern Convention Appendix 2, W&C Act Sch 1:1, CoMS Annex II, UK Priority Species, Bird Population Status: red	S3.1
<i>Branta bernicla</i>	Brent Goose	CoMS Annex II	S3.1
<i>Branta leucopsis</i>	Barnacle Goose	Bern Convention Appendix 2, Birds Directive Annex 1, CoMS Annex II	S3.1
<i>Branta ruficollis</i>	Red breasted	Bern Convention Appendix 2, Birds	S3.1

	Goose	Directive Annex 1, CoMS Annex II	
<i>Bucephala clangula</i>	Common Goldeneye	CoMS Annex II	S3.1
<i>Calcarius lapponicus</i>	Lapland Longspur (Lapland bunting)	W&C Act Sch 1:1, Bern Convention Appendix 2	S3.1
<i>Calidris alba</i>	Sanderling	Bern Convention Appendix 2, CoMS Annex II	S3.1
<i>Calidris alpina</i>	Dunlin	Birds Directive Annex 1, Bern Convention Appendix 2, CoMS Annex II, Bird Population Status: red	S3.1
<i>Calidris canutus</i>	Red Knot	CoMS Annex II	S3.1
<i>Calidris ferruginea</i>	Curlew Sandpiper	Bern Convention Appendix 2, CoMS Annex II	S3.1
<i>Calidris maritima</i>	Purple Sandpiper	W&C Act Sch 1:1, Bern Convention Appendix 2, CoMS Annex II	S3.1
<i>Calidris minuta</i>	Little Stint	Bern Convention Appendix 2, CoMS Annex II	S3.1
<i>Calidris temminckii</i>	Temminck's Stint	W&C Act Sch 1:1, Bern Convention Appendix 2, CoMS Annex II, Bird Population Status: red	S3.1
<i>Caprimulgus europaeus</i>	European Nightjar	UK Priority Species, Birds Directive Annex 1, Bern Convention Appendix 2, Bird Population Status: red	S3.1
<i>Carduelis cabaret</i>	Lesser Redpoll	UK Priority Species, Bird Population Status: red	S3.1
<i>Carduelis cannabina</i>	Linnet	Bern Convention Appendix 2, UK Priority Species, Bird Population Status: red	S3.1
<i>Carduelis carduelis</i>	Goldfinch	Bern Convention Appendix 2	S3.1
<i>Carduelis chloris</i>	Greenfinch	Bern Convention Appendix 2	S3.1
<i>Carduelis flammea</i>	Redpoll	Bern Convention Appendix 2	S3.1
<i>Carduelis flavirostris</i>	Twite	Bern Convention Appendix 2, UK Priority Species, Bird Population Status: red	S3.1
<i>Carduelis hornemanni</i>	Arctic Redpoll	Bern Convention Appendix 2	S3.1
<i>Carduelis spinus</i>	Siskin	Bern Convention Appendix 2	S3.1
<i>Certhia familiaris</i>	Treecreeper	Bern Convention Appendix 2	S3.1
<i>Cettia cetti</i>	Cetti's Warbler	W&C Act Sch 1:1	S3.1
<i>Charadrius dubius</i>	Little Ringed Plover	W&C Act Sch 1:1, CoMS Annex II, Bern Convention Appendix 2	S3.1
<i>Charadrius hiaticula</i>	Common Ringed Plover	CoMS Annex II, Bern Convention Appendix 2	S3.1
<i>Cinclus cinclus</i>	White-throated Dipper	Bern Convention Appendix 2	S3.1
<i>Circus</i>	Indet. Harrier	W&C Act Sch 1:1	S3.1

<i>Circus cyaneus</i>	Hen harrier	W&C Act Sch 1:1, Birds Directive Annex 1, Bird Population Status: red	S3.1
<i>Clangula hyemalis</i>	Long-Tailed Duck	W&C Act Sch 1:1, CoMS Annex II	S3.1
<i>Coccothraustes coccothraustes</i>	Hawfinch	Bern Convention Appendix 2, UK Priority Species, Bird Population Status: red	S3.1
<i>Coturnix coturnix</i>	Quail	W&C Act Sch 1:1	S3.1
<i>Crex crex</i>	Corncrake	Birds Directive Annex 1, Bern Convention Appendix 2, W&C Act Sch 1:1, CoMS Annex II, UK Priority Species, Bird Population Status: red	S3.1
<i>Cuculus canorus</i>	Cuckoo	UK Priority Species, Bird Population Status: red	S3.1
<i>Cyanistes caeruleus</i>	Blue Tit	Bern Convention Appendix 2	S3.1
<i>Cygnus columbianus</i>	Bewick's Swan (Tundra Swan)	Birds Directive Annex 1, Bern Convention Appendix 2, W&C Act Sch 1:1, CoMS Annex II, UK Priority Species	S3.1
<i>Cygnus cygnus</i>	Whooper Swan	Birds Directive Annex 1, Bern Convention Appendix 2, W&C Act Sch 1:1, CoMS Annex II	S3.1
<i>Cygnus olor</i>	Mute Swan	CoMS Annex II	S3.1
<i>Delichon urbicum</i>	House Martin	Bern Convention Appendix 2	S3.1
<i>Dendrocopos major</i>	Great Spotted Woodpecker	Bern Convention Appendix 2	S3.1
<i>Dendrocopos minor</i>	Lesser spotted woodpecker	Bern Convention Appendix 2, UK Priority Species, Bird Population Status: red	S3.1
<i>Egretta garzetta</i>	Little Egret	Birds Directive Annex 1, Bern Convention Appendix 2, CoMS Annex II	S3.1
<i>Emberiza aureola</i>	Yellow-Breasted Bunting	Bern Convention Appendix 2	S3.1
<i>Emberiza caesia</i>	Cretzschmar's Bunting	Birds Directive Annex 1, Bern Convention Appendix 2	S3.1
<i>Emberiza calandra</i>	Corn bunting	UK Priority Species, Bird Population Status: red	S3.1
<i>Emberiza cirius</i>	Cirl Bunting	Bern Convention Appendix 2, W&C Act Sch 1:1, UK Priority Species, Bird Population Status: red	S3.1
<i>Emberiza citrinella</i>	Yellowhammer	Bern Convention Appendix 2, UK Priority Species, Bird Population Status: red	S3.1
<i>Emberiza schoeniclus</i>	Reed Bunting	Bern Convention Appendix 2, UK Priority Species	S3.1
<i>Erithacus rubecula</i>	Robin	Bern Convention Appendix 2	S3.1
<i>Falco columbarius</i>	Merlin	Birds Directive Annex 1, Bern Convention Appendix 2, W&C Act Sch 1:1	S3.1
<i>Falco peregrinus</i>	Peregrine Falcon	Birds Directive Annex 1, Bern Convention	S3.1

		Appendix 2, W&C Act Sch 1:1	
<i>Falco subbuteo</i>	Hobby	Bern Convention Appendix 2, W&C Act Sch 1:1	S3.1
<i>Falco tinnunculus</i>	Kestrel	Bern Convention Appendix 2	S3.1
<i>Falco vespertinus</i>	Red-Footed Falcon	Bern Convention Appendix 2	S3.1
<i>Ficedula parva</i>	Red-Breasted Flycatcher	Birds Directive Annex 1	S3.1
<i>Fratercula arctica</i>	Atlantic Puffin	CoMS Annex II	S3.1
<i>Fringilla montifringilla</i>	Brambling	W&C Act Sch 1:1	S3.1
<i>Fulica atra</i>	Common Coot	CoMS Annex II	S3.1
<i>Gallinago gallinago</i>	Common Snipe	CoMS Annex II	S3.1
<i>Gallinula chloropus</i>	Common Moorhen	CoMS Annex II	S3.1
<i>Gavia</i>	Indet. Diver	W&C Act Sch 1:1	S3.1
<i>Gavia immer</i>	Great Northern Diver	Birds Directive Annex 1, CoMS Annex II, Bern Convention Appendix 2, W&C Act Sch 1:1	S3.1
<i>Grus grus</i>	Common Crane	Birds Directive Annex 1, CoMS Annex II, Bern Convention Appendix 2	S3.1
<i>Haematopus ostralegus</i>	Eurasian Oystercatcher	CoMS Annex II	S3.1
<i>Hirundo rustica</i>	Swallow	Bern Convention Appendix 2	S3.1
<i>Lanius collurio</i>	Red-backed shrike	Birds Directive Annex 1, Bern Convention Appendix 2, W&C Act Sch 1:1, UK Priority Species, Bird Population Status: red	S3.1
<i>Larus argentatus</i>	Herring Gull	CoMS Annex II, UK Priority Species, Bird Population Status: red	S3.1
<i>Larus canus</i>	Common Gull	CoMS Annex II	S3.1
<i>Larus fuscus</i>	Lesser Black-backed Gull	CoMS Annex II	S3.1
<i>Larus glaucoides</i>	Iceland Gull	CoMS Annex II	S3.1
<i>Larus hyperboreus</i>	Glaucous Gull	CoMS Annex II	S3.1
<i>Larus marinus</i>	Great Black-backed Gull	CoMS Annex II	S3.1
<i>Larus melanocephalus</i>	Mediterranean Gull	Birds Directive Annex 1, CoMS Annex II, Bern Convention Appendix 2, W&C Act Sch 1:1	S3.1
<i>Larus minutus</i>	Little Gull	Birds Directive Annex 1, CoMS Annex II, Bern Convention Appendix 2, W&C Act Sch 1:1	S3.1
<i>Larus ridibundus</i>	Common Black-headed Gull	CoMS Annex II	S3.1

<i>Limosa lapponica</i>	Bar-Tailed Godwit	Birds Directive Annex 1, CoMS Annex II	S3.1
<i>Limosa limosa</i>	Black tailed Godwit	W&C Act Sch 1:1, CoMS Annex II, UK Priority Species, Bird Population Status: red	S3.1
<i>Locustella naevia</i>	Common Grasshopper Warbler	UK Priority Species, Bird Population Status: red	S3.1
<i>Loxia curvirostra</i>	Crossbill	Bern Convention Appendix 2	S3.1
<i>Lullula arborea</i>	Woodlark	Birds Directive Annex 1, W&C Act Sch 1:1, UK Priority Species	S3.1
<i>Luscinia megarhynchos</i>	Nightingale	Bern Convention Appendix 2	S3.1
<i>Lymnocyptes minimus</i>	Jack Snipe	CoMS Annex II	S3.1
<i>Melanitta nigra</i>	Common Scoter	W&C Act Sch 1:1, CoMS Annex II, UK Priority Species, Bird Population Status: red	S3.1
<i>Mergellus albellus</i>	Smew	Birds Directive Annex 1, CoMS Annex II, Bern Convention Appendix 2	S3.1
<i>Mergus merganser</i>	Goosander	CoMS Annex II	S3.1
<i>Mergus serrator</i>	Red breasted Merganser	CoMS Annex II	S3.1
<i>Milvus milvus</i>	Red Kite	Birds Directive Annex 1, W&C Act Sch 1:1	S3.1
<i>Motacilla alba</i>	White/Pied Wagtail	Bern Convention Appendix 2	S3.1
<i>Motacilla cinerea</i>	Grey Wagtail	Bern Convention Appendix 2	S3.1
<i>Motacilla flava subsp. flavissima</i>	Yellow Wagtail	Bern Convention Appendix 2, Bird Population Status: red, UK Priority Species	S3.1
<i>Muscicapa striata</i>	Spotted flycatcher	Bern Convention Appendix 2, Bird Population Status: red, UK Priority Species	S3.1
<i>Netta rufina</i>	Red crested Pochard	CoMS Annex I CoMS Annex II	S3.1
<i>Numenius arquata</i>	Eurasian Curlew	UK Priority Species, CoMS Annex II	S3.1
<i>Numenius phaeopus</i>	Whimbrel	W&C Act Sch 1:1, CoMS Annex II	S3.1
<i>Oenanthe oenanthe</i>	Wheatear	Bern Convention Appendix 2	S3.1
<i>Pagophila eburnea</i>	Ivory Gull	Bern Convention Appendix 2	S3.1
<i>Pandion haliaetus</i>	Osprey	W&C Act Sch 1:1, Birds Directive Annex 1	S3.1
<i>Parus major</i>	Great Tit	Bern Convention Appendix 2	S3.1
<i>Passer domesticus</i>	House Sparrow	UK Priority Species, Bird Population Status: red	S3.1
<i>Passer montanus</i>	Tree sparrow	UK Priority Species, Bird Population Status: red	S3.1
<i>Perdix perdix</i>	Grey partridge	UK Priority Species, Bird Population Status: red	S3.1

<i>Periparus ater</i>	Coal Tit	Bern Convention Appendix 2	S3.1
<i>Phalacrocorax carbo</i>	Great Cormorant	CoMS Annex II	S3.1
<i>Philomachus pugnax</i>	Ruff	W&C Act Sch 1:1, CoMS Annex II, Birds Directive Annex 1, Bird Population Status: red	S3.1
<i>Phoenicurus ochruros</i>	Black Redstart	W&C Act Sch 1:1, Bern Convention Appendix 2	S3.1
<i>Phoenicurus phoenicurus</i>	Redstart	Bern Convention Appendix 2	S3.1
<i>Phylloscopus sibilatrix</i>	Wood Warbler	UK Priority Species, Bird Population Status: red	S3.1
<i>Picus viridis</i>	Green Woodpecker	Bern Convention Appendix 2	S3.1
<i>Plectrophenax nivalis</i>	Snow Bunting	W&C Act Sch 1:1, Bern Convention Appendix 2	S3.1
<i>Pluvialis apricaria</i>	Golden Plover	Birds Directive Annex 1	S3.1
<i>Pluvialis apricaria</i>	Eurasian Golden Plover	CoMS Annex II	S3.1
<i>Pluvialis squatarola</i>	Grey Plover	CoMS Annex II	S3.1
<i>Podiceps cristatus</i>	Great Crested Grebe	CoMS Annex II	S3.1
<i>Poecile montanus</i>	Willow Tit	Bern Convention Appendix 2, UK Priority Species, Bird Population Status: red	S3.1
<i>Poecile palustris</i>	Marsh Tit	Bern Convention Appendix 2, UK Priority Species, Bird Population Status: red	S3.1
<i>Porzana porzana</i>	Spotted Crake	W&C Act Sch 1:1, CoMS Annex II, Birds Directive Annex 1, Bern Convention Appendix 2	S3.1
<i>Prunella modularis</i>	Hedge Accentor	Bern Convention Appendix 2, UK Priority Species	S3.1
<i>Pyrrhula pyrrhula subsp. pileata</i>	Common Bullfinch	UK Priority Species	S3.1
<i>Rallus aquaticus</i>	Water Rail	CoMS Annex II	S3.1
<i>Recurvirostra avosetta</i>	Pied Avocet	W&C Act Sch 1:1, CoMS Annex II, Birds Directive Annex 1, Bern Convention Appendix 2	S3.1
<i>Regulus ignicapilla</i>	Firecrest	W&C Act Sch 1:1, Bern Convention Appendix 2	S3.1
<i>Regulus regulus</i>	Goldcrest	Bern Convention Appendix 2	S3.1
<i>Riparia riparia</i>	Sand Martin	Bern Convention Appendix 2	S3.1
<i>Rissa tridactyla</i>	Black-legged Kittiwake	CoMS Annex II	S3.1
<i>Saxicola rubetra</i>	Whinchat	Bern Convention Appendix 2	S3.1
<i>Saxicola torquata</i>	Stonechat	Bern Convention Appendix 2	S3.1

<i>Scolopax rusticola</i>	Eurasian Woodcock	CoMS Annex II	S3.1
<i>Sitta europaea</i>	Wood Nuthatch	Bern Convention Appendix 2	S3.1
<i>Somateria mollissima</i>	Common Eider	CoMS Annex II, Bird Population Status: red	S3.1
<i>Stercorarius skua</i>	Great Skua	CoMS Annex II	S3.1
<i>Sterna hirundo</i>	Common Tern	CoMS Annex II, Birds Directive Annex 1, Bern Convention Appendix 2	S3.1
<i>Streptopelia turtur</i>	European Turtle Dove	UK Priority Species, Bird Population Status: red	S3.1
<i>Strix aluco</i>	Tawny Owl	Bern Convention Appendix 2	S3.1
<i>Sturnus vulgaris</i>	Starling	UK Priority Species, Bird Population Status: red	S3.1
<i>TachyUktus ruficollis</i>	Little Grebe	CoMS Annex II	S3.1
<i>Tadorna ferruginea</i>	Ruddy Shelduck	CoMS Annex II, Birds Directive Annex 1, Bern Convention Appendix 2	S3.1
<i>Tadorna tadorna</i>	Common Shelduck	CoMS Annex II, Bern Convention Appendix 2	S3.1
<i>Tringa erythropus</i>	Spotted Redshank	CoMS Annex II	S3.1
<i>Tringa glareola</i>	Wood Sandpiper	W&C Act Sch 1:1, CoMS Annex II, Birds Directive Annex 1, Bern Convention Appendix 2	S3.1
<i>Tringa nebularia</i>	Greenshank	W&C Act Sch 1:1, CoMS Annex II	S3.1
<i>Tringa ochropus</i>	Green Sandpiper	W&C Act Sch 1:1, CoMS Annex II, Bern Convention Appendix 2	S3.1
<i>Tringa totanus</i>	Common Redshank	CoMS Annex II	S3.1
<i>Troglodytes troglodytes</i>	Wren	Bern Convention Appendix 2	S3.1
<i>Turdus iliacus</i>	Redwing	W&C Act Sch 1:1, Bird Population Status: red	S3.1
<i>Turdus philomelos</i>	Song thrush	UK Priority Species, Bird Population Status: red	S3.1
<i>Turdus pilaris</i>	Fieldfare	W&C Act Sch 1:1, Bird Population Status: red	S3.2
<i>Tyto alba</i>	Barn Owl	Bern Convention Appendix 2, W&C Act Sch 1:1	S3.2
<i>Upupa epops</i>	Hoopoe	Bern Convention Appendix 2, W&C Act Sch 1:1	S3.1
<i>Uria aalge</i>	Common Guillemot	CoMS Annex II	S3.1
<i>Vanellus vanellus</i>	Lapwing	CoMS Annex II, UK Priority Species, Bird Population Status: red	S3.2

Mammals			
<i>Arvicola amphibius</i>	Water vole	UK Priority Species, Schedule 5	Special habitat criteria: see section H12.
<i>Barbastella barbastellus</i>	Barbastelle	IUCN Red List Near Threatened	S3.1
<i>Myotis bechsteinii</i>	Bechstein's Bat	IUCN Red List Near Threatened	S3.1
<i>Eptesicus serotinus</i>	Serotine	<p>All bats: UK Priority Species, Schedule 5, Bonn Convention Appendix 2, Bern Convention Appendix 2, The Conservation of Habitats and Species Regulations 2010 Schedule 2, Convention on Migratory Species Annex 1, Habitats Directive Annex 2 or 4.</p> <p>Note on bats: Barbastelle, Bechstein and horseshoe bats are listed in Annex 2 of the Habitats Directive, rather than Annex 4; all bats are heavily protected throughout Europe. Species not recently recorded which may yet be found in the county include Grey long-eared bat, which is included here.</p> <p>Barbastelle and Bechstein's bats are both internationally declining and listed as Near Threatened by the IUCN. Well-established roosting sites for either species should be selected regardless of bat numbers, along with suitable habitat.</p>	<p>S3.2: All known breeding sites, other roosts or complexes used by 5 or more individual animals, other than <i>Pipistrellus pipistrellus</i>. Contiguous flyways and feeding areas should be included.</p> <p>S3.3: Any roost or complex with 3 or more species of bats.</p>
<i>Myotis brandtii</i>	Brandt's bat		
<i>Myotis daubentonii</i>	Daubenton's bat		
<i>Myotis mystacinus</i>	Whiskered Bat		
<i>Myotis nattereri</i>	Natterer's Bat		
<i>Nyctalus leisleri</i>	Leisler's bat		
<i>Nyctalus noctula</i>	Noctule		
<i>Pipistrellus pygmaeus</i>	Soprano Pipistrelle ¹		
<i>Plecotus auritus</i>	Brown Long-Eared Bat		
<i>Plecotus austriacus</i>	Grey Long-Eared Bat		
<i>Rhinolophus ferrumequinum</i>	Greater Horseshoe Bat		
<i>Rhinolophus hipposideros</i>	Lesser Horseshoe Bat		
<i>Pipistrellus pipistrellus</i>	Pipistrelle bat		

¹ The Soprano pipistrelle is a recently-distinguished species that does not yet feature in all the protective legislation applicable to other bat species

			with 50 or more animals.
<i>Lutra lutra</i>	European otter	UK Priority Species, Schedule 5, Bern Convention Appendix 2, The Conservation of Habitats and Species Regulations 2010 Schedule 2, Habitats Directive Annex 2&4, IUCN Red List Near Threatened	Special habitat criteria: see section H12.
<i>Muscardinus avellanarius</i>	Hazel dormouse	UK Priority Species, Schedule 5, The Conservation of Habitats and Species Regulations 2010 Schedule 2, Habitats Directive Annex 4	Special habitat criteria: see section H12.

Table S4 – Important bird assemblages

Table S4 – Important bird assemblages	
Lowland wet grassland	Threshold index of 11
Mute swan	3
Gadwall	4
Garganey	5
Quail	5
Lapwing	1
Snipe	3
Curlew	2
Redshank	2
Cuckoo	2
Grasshopper warbler	2
Sedge warbler	1
Reed bunting	1
Lowland open waters and their margins	Threshold index value 27
Little grebe	2.5
Great crested grebe	3
Grey heron	3
Mute swan	3
Shelduck	2
Gadwall	4
Garganey	5
Tufted duck	4
Water rail	3
Little ringed plover	4
Ringed plover	3
Snipe	2
Redshank	2
Cuckoo	2
Kingfisher	3
Yellow wagtail	1
Grey wagtail	2

Cetti's warbler	4
Grasshopper warbler	2
Sedge warbler	1
Reed warbler	2
Reed bunting	1
Lowland fen without open water	Threshold index value 15
Little grebe	2.5
Gadwall	4
Garganey	5
Pochard	4
Water rail	3
Snipe	2
Cuckoo	2
Whinchat	2
Cetti's warbler	4
Grasshopper warbler	2
Sedge warbler	1
Reed warbler	2
Reed bunting	1
Sand dunes and salt marshes	Threshold index value 10
Shelduck	2
Ringed plover	3
Lapwing	1
Snipe	3
Curlew	2
Redshank	2
Cuckoo	2
Grasshopper warbler	2
Sedge warbler	1
Linnet	1
Reed bunting	1

Scrub (excluding heath)	Threshold index value 14
Turtle dove	1.5
Cuckoo	2
Long eared owl	3
Nightjar	3
Tree pipit	1.5
Nightingale	3
Whinchat	2
Stonechat	2
Grasshopper warbler	2
Whitethroat	2
Lesser whitethroat	2
Garden warbler	1
Blackcap	1
Linnet	1
Woodland	Threshold index value 46
Grey heron	3
Goshawk	5
Sparrowhawk	2
Buzzard	3
Hobby	4
Woodcock	2
Stock dove	1
Cuckoo	2
Tawny owl	2
Long eared owl	3
Nightjar	3
Green woodpecker	2
Great spotted woodpecker	2
Lesser spotted woodpecker	3
Tree pipit	1.5
Nightingale	3
Redstart	1

Garden warbler	1
Blackcap	1
Wood warbler	2
Chiffchaff	1
Goldcrest	1
Firecrest	5
Spotted flycatcher	1
Pied flycatcher	2
Long tailed tit	1
Marsh tit	1
Willow tit	2
Coal tit	1
Nuthatch	2
Treecreeper	1
Jay	1
Raven	3
Siskin	2
Lesser redpoll	1
Common crossbill	3
Bullfinch	1
Hawfinch	3